



secret JARDIN

**PRODUCT CATALOGUE 2024**

# ABOUT US

## TRANSFORMING AGRICULTURE FOR A SUSTAINABLE FUTURE WITH INDOOR GROWING

In a world faced with the dual challenge of achieving energy efficiency and increasing local food production in urban areas, indoor farming emerges as a groundbreaking solution. Since 2006, we've been pioneering the urban gardening industry, committed to providing cutting-edge solutions for professional cultivators and passionate enthusiasts in this rapidly evolving field.

## OUR MISSION

At Secret Jardin, we're driven by a singular mission – to create a safer, more resilient, and sustainable world through indoor farming.

Our Product Range

From innovative growing tents and rooms to high-performance fans and lighting equipment, our European-designed products have earned a reputation for their unmatched reliability and endurance. Whether you're a hobbyist, a seasoned professional, or a dedicated researcher, our diverse portfolio offers solutions for a wide range of applications.

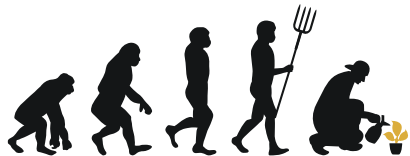
## KEY FEATURES

- Reliability: Our products are built to last and perform consistently, ensuring you can count on them for years to come.
- Sustainability: We're committed to sustainability and energy efficiency, contributing to a greener future.
- Versatility: Our solutions cater to a wide spectrum of users, from beginners to experts.
- User-Friendly Integration: We understand the importance of easy integration. Our products are designed for a hassle-free experience.
- Self-Sufficiency: We empower growers with the tools they need to achieve self-sufficiency in their indoor cultivation projects.

## COMMUNITY SHOWCASE

Explore our website to discover a treasure trove of success stories and use cases from our thriving community of indoor growers. See how our products have enabled countless individuals and businesses to achieve remarkable results.

**We are dedicated to democratizing indoor farming, addressing the challenges faced by growers, and supporting the transition to a more sustainable, energy-efficient, and resilient world. Join us on this exciting journey towards a greener future!**



**GROW UP WITH**  
**SECRET JARDIN**



[info@secretjardin.com](mailto:info@secretjardin.com)



[Secretjardin\\_](https://www.instagram.com/Secretjardin_)



[Secret Jardin Official](https://www.youtube.com/channel/UCv33333333333333333333)



[Secret Jardin](https://www.facebook.com/SecretJardin)



[secretjardin.com](https://www.secretjardin.com)

# CONTENTS



## GROW STATIONS

4



### FOR TWENTY

6



### THE ORIGINAL

8



## PRODUCTS BY CATEGORY

10



### GROW ROOMS

14



### LIGHTING

24



### VENTILATION

30



### ACCESSORIES

36



## SPARE PARTS

38



## TECHNICAL DATA

40

# GROW STATIONS

THE FIRST COMPLETE & ALL IN ONE “SECRET JARDIN”



**FOR TWENTY**

**6**



**THE ORIGINAL**

**8**



*For Twenty*



*The Original*



**READY TO GROW IN 30 min**



**BEST YIELD PER WATT**



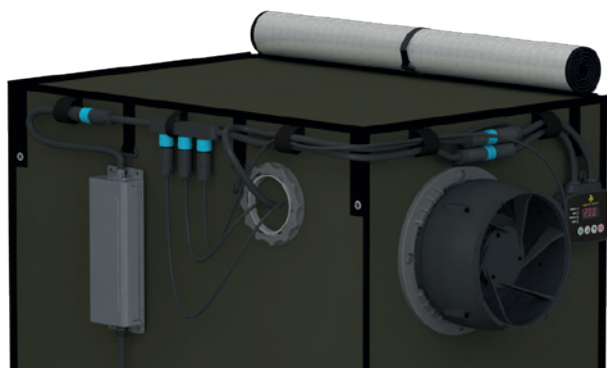
**BUILT FOR LIFE**



# GROW STATIONS

## GROW STATIONS OVERVIEW

COMPLETELY INTEGRATED, WITH EVERYTHING YOU NEED TO GROW!



### EXTRACTOR

Control your grow room's temperature and renew the air. Its EC motor allows you to adapt the fan's speed to your plants' needs, while reducing power consumption and ensuring high durability.



### CONTROLLER

Adjust your lighting's power from 5 to 100% and duration according to your plants' needs. It keeps your setting in memory in case of any electrical shortage.



### (OPTION) FILTER

The optional active carbon filter prevents any unwanted odours from leaking out of your grow tent into your living space!

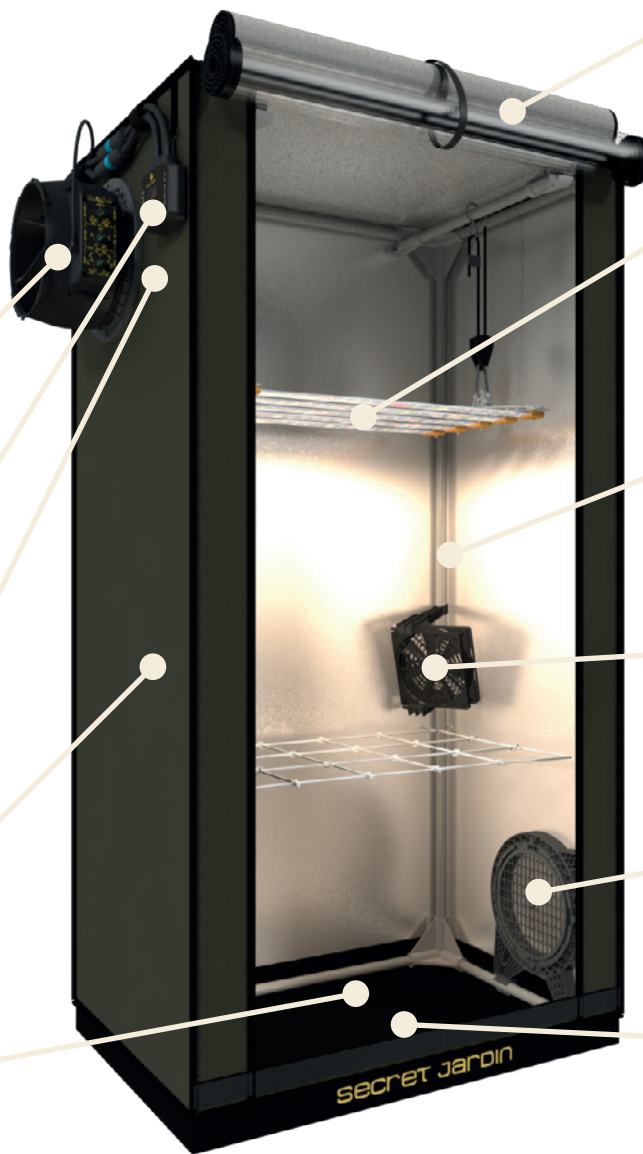


### FABRIC

The most reflective inner material and highly resistant Oxford. Fully insulates your plants from outside light and reduces temperature exchanges with the tent's exterior.

### WATERPROOF BOTTOM

Washable strong and scratch-resistant fibered liner. It protects against water leaks at the base of your tent.



### DOUBLE DOOR



Features two overlapping doors: an outer door with reflective Mylar, and a transparent inner door. This provides a full-size viewport without having to open the tent completely and without stressing your plants with atmosphere changes

### LIGHTING

Cosmorrow lamps use high output LEDs. They are designed for extended lifetime and optimal water protection. Their patented technology allows a minimalist form factor and highly efficient heat dissipation.

### STRUCTURE

The grow room's inner frame is made with highly robust stainless steel poles in combination with sturdy plastic corners. Rust free for life.

### MONKEY FAN

Homogenize your grow space's atmosphere and create a light breeze to strengthen your plants and avoid humidity buildup. Their EC motor guarantees a high durability and low power consumption.

### LIGHT BAFFLE

The included Light Baffle provides a passive air intake that is completely light-proof. No need to open or close to let your plants breathe!

### (OPTION) HEAT MAT

The included heat mats help boost growth for cuttings and seedlings and promotes increased plant transpiration. Autoregulated and built sturdy.

## GROW STATIONS

### FOR TWENTY 100

60x40x116cm – 100W LED



FS100

# *For Twenty* **100**

**For Twenty 100** has a high grow area with dimmable light intensity for full crop cycle from seedling to flowering and fruiting.

It includes high intensity Full Spectrum LED lighting, close to summer sunlight and ideal for late stages of plant development.

# GROW STATIONS

## FOR TWENTY 100

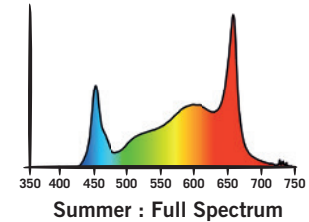
60x40x116cm – 100W LED

### FROM SEED TO SUCCESS

All parameters can be adjusted according to your plant's grow stage.



	SEEDLING	GROWING	FLOWERING
EXT MIN	10%	25%	50%
TEMP °	28 °C	24 °C	25 °C
DIMMING	30 %	70 %	100 %
DURATION	18h	18h	12h



### LIGHTING INFORMATION



60x40cm



15 cm



100 W (5x COP20FS)

PPE Bulb

2.85  $\mu\text{mol/s/W}$

PPF

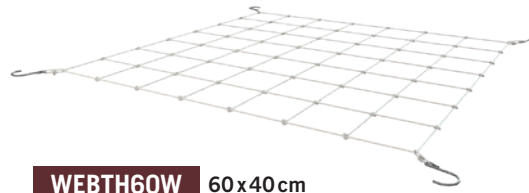
270  $\mu\text{mol/s}$

PPFD Avg.

1280  $\mu\text{mol/s/m}^2$

### WEB PLANT SUPPORT INCLUDED

The included web plant support helps maintain plants with heavier flowers and fruits in an upright position without sagging.



WEBTH60W 60x40cm

860	1070	1225	1225	1070	860
1070	1595	1860	1860	1595	1070
1070	1595	1860	1860	1595	1070
860	1070	1225	1225	1070	860

$\mu\text{mol/s/m}^2$

### OPTIONS & CONSUMABLES



DF16F100

DF16 Carbon Filter CTC80  
0.4 kg 100 m<sup>3</sup>/h



HM20

Heating Mat 55x35cm 20W

*All plants:* Necessary when ambient temperature is between 15-20°C

*Clones & seedlings :* Necessary when ambient temperature is between 15-25°C

FOR TWENTY 100		WGT			ASSEMBLED			CONSUMPTION			POWER & PLUGS				LIGHTING						VENTILATION			HEAT MAT		ENVIRONMENT		LIFE TIME
REF	DESIGNATION	NET kg	W cm	D cm	H cm	MAX W	MONTHLY		VOLTAGE V	FREQ. Hz	PLUG		LED BULBS #	POWER W	PPE µmol/s/W	PPF µmol/s	AVERAGE PPFD			2 MIN CYCLE (FILTER ON)			INCLUDED # & Power	OPTION # & Power	WORKING T °C	STORAGE T °C	MTBF Hours	
							Light	kWh			Type	Country					Grow Area	Dist.	µmol/s/m²	Extractor (inc.)	Filter (opt.)	Fan (inc.)						
FS100	For Twenty 100	8.5	60	40	116	140	12 h/d	45	200-240 V	50/60 Hz	C/G Type	UE/UK	5x COP20FS	100W	2.85	270	60x40 cm	15 cm	1280	150 m³/h	100 m³/h	2x MF120	—	1x 20W	5 to 35°C	-20 to 60°C	50000 h	

### THE ORIGINAL 60

60x40x116cm – 60W LED



GR60

# *The Original* 60

**The Original 60** is designed with medium to high light intensity for cloning, microgreens and plant growth. This flexible grow room can easily be adapted for cloning and growing applications to suit a variety of situations.

It includes Cold White 6500K LED lighting, close to spring sunlight and ideal for early stages of plant development.



# GROW STATIONS

## THE ORIGINAL 60

60x40x116 cm – 60W LED

### MULTIPLE SETUP OPTIONS

The included shelves can be removed to combine spaces and lighting, allowing for higher intensity lighting suitable for growing, or to create an intermediate setup for both cloning and growing on different levels.



1 Shelf Configuration



2 Shelves Configuration

### FROM SEED TO SUCCESS

All parameters can be adjusted according to your plant's grow stage.

	SEEDLING	GROWING
EXT MIN	10%	25%
TEMP °	28 °C	24 °C
DIMMING	30%	70%
DURATION	18h	18h



### OPTIONS & CONSUMABLES



**DF16F100**

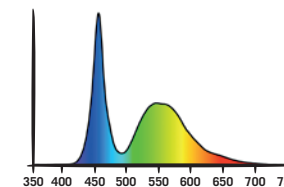
DF16 Carbon Filter CTC80 0.4 kg 100m³/h



**HM20**

Heating Mat 55x35cm 20W

*All plants:* Necessary when ambient temperature is between 15-20°C  
*Clones & seedlings :* Necessary when ambient temperature is between 15-25°C



Spring : Grow Spectrum

### LIGHTING INFORMATION

60x40cm	15cm
PPE Bulb	2.70 µmol/s/W
20W (1x COP2065)	
PPF	52 µmol/s
PPFD Avg.	290 µmol/s/m²

210	245	280	280	245	210
245	345	400	400	345	245
245	345	400	400	345	245
210	245	280	280	245	210

µmol/s/m²





40W (2x COP2065)	
PPF	103 µmol/s
PPFD Avg.	540 µmol/s/m²

360	450	515	515	450	360
450	670	780	780	670	450
450	670	780	780	670	450
360	450	515	515	450	360

µmol/s/m²

THE ORIGINAL 60		WGT	ASSEMBLED			CONSUMPTION		POWER & PLUGS				LIGHTING					VENTILATION			HEAT MAT		ENVIRONMENT		LIFE TIME
REF	DESIGNATION	NET kg	W cm	D cm	H cm	MAX W	MONTHLY Light kWh	VOLTAGE V	FREQ. Hz	PLUG Type	Country	LED BULBS #	POWER W	PPE µmol/s/W	PPF µmol/s	AVERAGE PPFD WITH 1X/2X COP	2 MIN CYCLE (FILTER ON)			INCLUDED # & Power	OPTION # & Power	WORKING T °C	STORAGE T °C	MTBF Hours
GR60	The Original 60	11.5	60	40	116	150	18h/d	200-240 V	50/60 Hz	C/G Type	UE/UK	3x COP2065	60W	2.70	154	60x40cm 15cm 290/540	Extractor (inc.)	Filter (opt.)	Fan (inc.)	—	1x/2x/3x 20W	5 to 35°C	-20 to 60°C	50 000 h

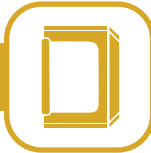
# PRODUCTS BY CATEGORY

	GROW ROOMS	14
	LIGHTING	24
	VENTILATION	30
	ACCESSORIES	36

## CATEGORIES OVERVIEW



### GROW ROOM



Secret Jardin proposes different ranges of grow rooms, for hobby applications to professional growing:

**Dark Propagator:** for germination, cloning and small plants.

**Dark Street:** ideal for growing larger plants in moderate spaces.

**Dark Room:** large size grow rooms for professional growers.

**Intense:** very large linkable grow rooms for industrial applications.

### VENTILATION



Our lineup includes air circulation and renewal equipment designed to fit our tents for the best results, with clip-on assembly and no tools required:

**Ducting Flange:** freely position openings on your tent to directly attach Secret Jardin extractors and filters, connect regular ducting or create passive intakes.

**Extractors & Filters:** Secret Jardin extractors and filters easily and securely attach to our Ducting Flange for simple and efficient air renewal.

**Monkey Fan:** designed to latch onto the grow tent's poles, these ensure ideal air circulation inside your tent.

### LIGHTING



Our high efficiency Cosmorrow lighting systems provide the safety and convenience of low voltage (24V), are water resistant (IP65), cool, compact and very durable!

Our lineup also includes complete kits for both growing and full spectrum lighting, which can be further upgraded for higher intensity:

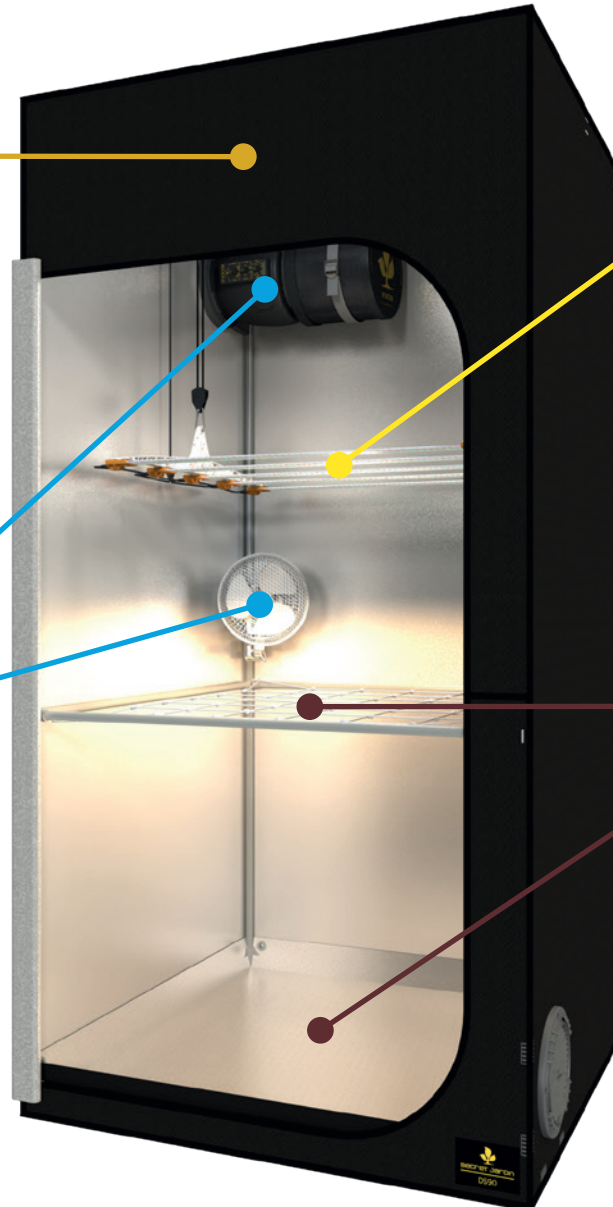
**Cosmorrow kits:** High intensity full spectrum lighting.

**TNoled kits:** Medium to high intensity grow spectrum lighting.

### ACCESSORIES



Secret Jardin also provides a variety of accessories to complement your grow room, including plant support nets, dryers and space boosters.



## CONFIGURATION EXAMPLES

### USING DIFFERENT SECRET JARDIN PRODUCTS



#### ① DP90 Example Growing Config.



##### PRODUCT LIST

1x	<b>DP90</b>	p. 20
2x	<b>TN040GR</b>	p. 27
1x	<b>DF16E150</b>	p. 32
1x	<b>MF120</b>	p. 34

##### LIGHTING INFORMATION

	90x60 cm	<b>PPE Bulb</b>	2.70 $\mu\text{mol/s/W}$
	15 cm	<b>PPF</b>	204 $\mu\text{mol/s}$
	2x TN040GR	<b>PPFD Avg.</b>	470 $\mu\text{mol/s/m}^2$

135	260	420	420	340	420	420	260	135
185	400	695	680	530	680	695	400	185
220	495	860	810	645	810	860	495	220
220	495	860	810	645	810	860	495	220
185	400	695	680	530	680	695	400	185
135	260	420	420	340	420	420	260	135

$\mu\text{mol/s/m}^2$

#### ② DS90 Example Full Spectrum Config.



##### PRODUCT LIST

1x	<b>DS90W</b>	p. 16
1x	<b>COM200FS</b>	p. 26
1x	<b>DF16E350</b>	p. 32
1x	<b>DF16F250</b>	p. 32
1x	<b>MF020BB</b>	p. 35

##### LIGHTING INFORMATION

	90x90 cm	<b>PPE Bulb</b>	2.85 $\mu\text{mol/s/W}$
	20 cm	<b>PPF</b>	540 $\mu\text{mol/s}$
	1x COM200FS	<b>PPFD Avg.</b>	805 $\mu\text{mol/s/m}^2$

495	555	595	600	630	600	595	555	495
555	745	845	845	895	845	845	745	555
595	930	940	1040	1090	1040	940	930	595
600	920	930	1080	1100	1080	930	920	600
630	935	970	1100	1125	1100	970	935	630
600	920	930	1080	1100	1080	930	920	600
595	930	940	1040	1090	1040	940	930	595
555	745	845	845	895	845	845	745	555
495	555	595	600	630	600	595	555	495

$\mu\text{mol/s/m}^2$

#### ③ DS150W Example Full Spectrum Config.



##### PRODUCT LIST

1x	<b>DS150W</b>	p. 16
2x	<b>COM200FS</b>	p. 26
1x	<b>DF16E350</b>	p. 32
1x	<b>DF16F350</b>	p. 32
1x	<b>MF020BB</b>	p. 35

##### LIGHTING INFORMATION

	150x77 cm	<b>PPE Bulb</b>	2.85 $\mu\text{mol/s/W}$
	20 cm	<b>PPF</b>	1080 $\mu\text{mol/s}$
	2x COM200FS	<b>PPFD Avg.</b>	1155 $\mu\text{mol/s/m}^2$

720	805	860	870	885	955	920	840	920	955	885	870	860	805	720
805	1080	1225	1225	1225	1265	1105	960	1105	1265	1225	1225	1225	1080	805
860	1345	1365	1390	1390	1385	1345	1180	1345	1385	1390	1390	1365	1345	860
870	1335	1345	1540	1540	1455	1335	1265	1335	1455	1540	1540	1345	1335	870
870	1335	1345	1540	1540	1455	1335	1265	1335	1455	1540	1540	1345	1335	870
860	1345	1365	1390	1390	1385	1345	1180	1345	1385	1390	1390	1365	1345	860
805	1080	1225	1225	1225	1265	1105	960	1105	1265	1225	1225	1225	1080	805
720	805	860	870	885	955	920	840	920	955	885	870	860	805	720

$\mu\text{mol/s/m}^2$



## ADVISED CONFIGURATIONS

SET UP YOUR SECRET JARDIN GROW TENT FOR DIFFERENT PURPOSES



1

CLONING			ASSEMBLED			GROW LED		VENTILATION ADVISED			FAN	HEAT MAT
TENT	DESIGNATION	REV	W cm	D cm	H cm	PPFD ~250		2 MIN CYCLE (FILTER ON)			ADVISED REF	ADVISED POWER
								EXTRACTOR	FILTER	INTAKE		
DP60	Dark Propagator 60 x 40 x 60 cm	R4.00	60	40	60	20 W		—	—	—	—	20 W
DP90	Dark Propagator 90 x 60 x 98 cm	R4.00	90	60	98	4x 20 W		50 m³/h	50 m³/h	—	MF120	4x 20 W
DP120	Dark Propagator 120 x 60 x 192 cm	R4.00	120	60	192	5x 40 W		150 m³/h	100 m³/h	—	5x MF120	5x 60 W

GROWING (SMALL PLANTS)			ASSEMBLED			GROW LED		VENTILATION ADVISED			FAN	HEAT MAT
TENT	DESIGNATION	REV	W cm	D cm	H cm	PPFD ~500	PPFD ~750	2 MIN CYCLE (FILTER ON)			ADVISED REF	ADVISED POWER
								EXTRACTOR	FILTER	INTAKE		
DP60	Dark Propagator 60 x 40 x 60 cm	R4.00	60	40	60	40 W	60 W	50 m³/h	50 m³/h	—	MF120	20 W
DP90	Dark Propagator 90 x 60 x 98 cm	R4.00	90	60	98	80 W	120 W	100 m³/h	100 m³/h	—	MF2X120	45 W
DP120	Dark Propagator 120 x 60 x 192 cm	R4.00	120	60	192	5x 80 W	5x 120 W	150 m³/h	150 m³/h	—	5x MF2X120	5x 60 W

FULL SPECTRUM (SMALL PLANTS)			ASSEMBLED			FULL SPECTRUM LED		VENTILATION ADVISED			FAN	HEAT MAT
TENT	DESIGNATION	REV	W cm	D cm	H cm	PPFD ~800	PPFD ~1100	1 MIN CYCLE (FILTER ON)			ADVISED REF	ADVISED POWER
								EXTRACTOR	FILTER	INTAKE		
DP60	Dark Propagator 60 x 40 x 60 cm	R4.00	60	40	60	60 W	100 W	150 m³/h	100 m³/h	—	MF120	20 W
DP90	Dark Propagator 90 x 60 x 98 cm	R4.00	90	60	98	120 W	200 W	150 m³/h	150 m³/h	—	MF120	45 W

2

FULL SPECTRUM (TALL PLANTS)			ASSEMBLED			FULL SPECTRUM LED		VENTILATION ADVISED			FAN	HEAT MAT
TENT	DESIGNATION	REV	W cm	D cm	H cm	PPFD ~800	PPFD ~1100	1 MIN CYCLE (FILTER ON)			ADVISED REF	ADVISED POWER
								EXTRACTOR	FILTER	INTAKE		
DS60	Dark Street 60 x 60 x 158 cm	R4.00	60	60	158	100 W	140 W	150 m³/h	150 m³/h	—	MF120	30 W
DS90	Dark Street 90 x 90 x 178 cm	R4.00	90	90	178	200 W	280 W	250 m³/h	250 m³/h	—	MF2X120	70 W
DS120	Dark Street 120 x 120 x 200 cm	R4.00	120	120	200	400 W	560 W	350 m³/h	350 m³/h	—	MF020	120 W
DS120W	Dark Street 120 x 60 x 178 cm	R4.00	120	60	178	200 W	280 W	250 m³/h	250 m³/h	—	MF2X120	60 W
DS150W	Dark Street 150 x 77 x 200 cm	R4.00	150	77	200	400 W	560 W	350 m³/h	350 m³/h	—	2x MF2X120	95 W

3

FULL SPECTRUM (LARGE SIZES)			ASSEMBLED			FULL SPECTRUM LED		VENTILATION ADVISED			FAN	HEAT MAT
TENT	DESIGNATION	REV	W cm	D cm	H cm	PPFD ~800	PPFD ~1100	1 MIN CYCLE (FILTER ON)			ADVISED REF	ADVISED POWER
								EXTRACTOR	FILTER	INTAKE		
DR150	Dark Room 150 x 150 x 217 cm	R4.00	150	150	217	600 W	840 W	650 m³/h	650 m³/h	—	2x MF30	200 W
DR240	Dark Room 237 x 237 x 200 cm	R4.00	237	237	200	1600 W	2240 W	900 m³/h	900 m³/h	450 m³/h	4x MF30	450 W
DR300	Dark Room 297 x 297 x 217 cm	R4.00	297	297	217	2400 W	3360 W	1200 m³/h	1200 m³/h	650 m³/h	4x MF30	750 W
DR240W	Dark Room 237 x 120 x 200 cm	R4.00	237	120	200	800 W	1120 W	650 m³/h	650 m³/h	—	2x MF30	250 W
DR300W	Dark Room 297 x 150 x 217 cm	R4.00	297	150	217	1200 W	1680 W	900 m³/h	900 m³/h	450 m³/h	2x MF30	350 W

FULL SPECTRUM (VERY LARGE SIZES)			ASSEMBLED			FULL SPECTRUM LED		VENTILATION ADVISED			FAN	HEAT MAT
TENT	DESIGNATION	REV	W cm	D cm	H cm	PPFD ~800	PPFD ~1100	1 MIN CYCLE (FILTER ON)			ADVISED REF	ADVISED POWER
								EXTRACTOR	FILTER	INTAKE		
INT480	Intense 470 x 300 x 233 cm	R4.00	300	470	233	3200 W	4480 W	1800 m³/h	1800 m³/h	900 m³/h	8x MF30	950 W
INT600	Intense 590 x 360 x 233 cm	R4.00	360	590	233	4800 W	6720 W	2400 m³/h	2400 m³/h	1300 m³/h	8x MF30	1500 W

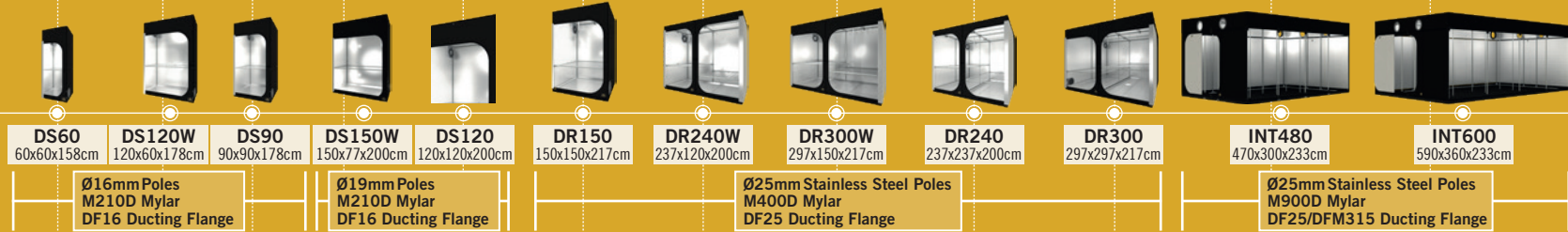
# GROW ROOMS

## DARK STREET R4.00

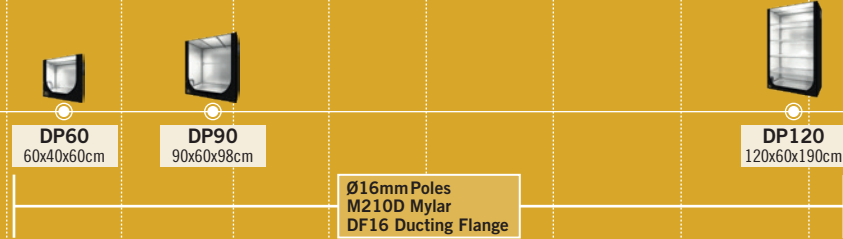
## DARK ROOM R4.00

## INTENSE R4.00

## DUCTING FLANGE



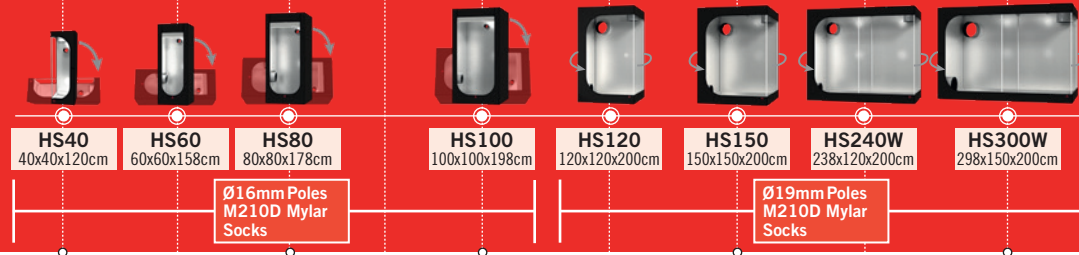
## DARK PROPAGATOR R4.00



## HYDRO SHOOT (SMALL) R2.00

## HYDRO SHOOT (LARGE) R2.00

## SOCKS



0.16m²

0.64m²

1.00m²

2.25m²

4.50m²

9.00m²

18.00m²

GROW AREA



## SECRET JARDIN VS HYDRO SHOOT

DIFFERENT FEATURES, SAME HIGH QUALITY, SAME SPARE PARTS!



### DUCTING FLANGE

(SECRET JARDIN)



### PRE-EQUIPPED GROW TENTS

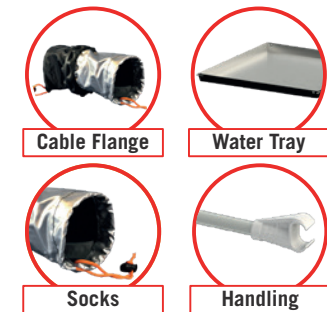
Secret Jardin tents come pre-equipped so you can quickly install a complete growing setup without requiring the use of any tools. Ducting Flanges are used to create intake/exhaust ports. StrapITs, CableITs, Cable Flanges and Handling Tubes are used to install lighting, ventilation, cables, watering systems, etc. The Water Tray is a flexible, removable water tray that keeps your tent clean and prevents flooding. Finally, the Space Booster & WebIT can be used to increase your grow space by up to 25% while supporting your plants.

#### TWO PRODUCT RANGES

- The “High-Space” range, which includes Dark Street (small), Dark Room (medium) and Intense (large) grow tents, are ideal for tall plants from 50 to 150 cm.
- The “Low-Space” range, which includes Dark Propagator grow tents, is designed for plants less than 80 cm tall. These grow tents are often used for propagation and growing seedlings, and can be used for blooming small plants if the right lighting is used.

### SOCKS

(HYDRO SHOOT)



### THE TENT FOR DO-IT-YOURSELFERS

The Hydro Shoot tents are the ideal foundation for any grower who wants to create a custom configuration. Although Hydro Shoot grow tents do not come with accessories, they are anything but basic. They include a removable Mylar Water Tray to prevent flooding and feature socks for managing ventilation and cable/hose routing. These socks are highly reflective and lightproof and can be fitted to various diameter ducts, filters, extraction systems, hoses and cables.

Hydro Shoot tents are made using the same materials as the other Secret Jardin grow tents, utilize the same double-flap zipper system and they use the same spare parts.

#### TWO PRODUCT RANGES

The small size can be used vertically for tall plants or horizontally for small plants and has a 16 mm frame. For the HS120 model and up, the grow tents feature a 19 mm frame, and the horizontal door design means the grow tent can be opened on 3 sides for easy access to the entire grow space.

## DARK STREET

SPACE SAVING TENTS WITH PREMIUM QUALITY

See p.40 for Specifications



**DS60**  
60x60x158 cm



**DS90**  
90x90x178 cm



**DS120**  
120x120x200 cm



**DS120W**  
120x60x178 cm



**DS150W**  
150x77x200 cm

The Dark Street grow tent is designed for plants measuring 50 to 150 cm tall, with grow spaces of 0.36 to 1.44 m<sup>2</sup>.

It features Ducting Flanges (DF16) for managing intake/exhaust and comes with everything you need to install the complete system.

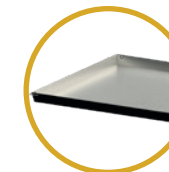
The grow tent comes in a sturdy bag with a shoulder strap.



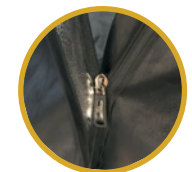
**Opening 270°**  
Full plant access



**Fully Pre-equipped**  
Adapt to your needs



**Water tray**  
Strong & Removable



**100% Lightproof**  
Double-flap zip



## DARK ROOM

GROW TENTS BUILT FOR MEDIUM GROWING SPACE

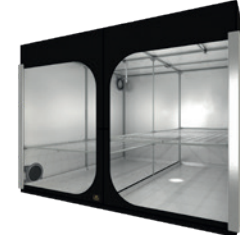
See p.40 for Specifications



**DR150**  
150x150x217 cm



**DR240**  
237x237x200 cm



**DR300**  
297x297x217 cm



**DR240W**  
237x120x200 cm

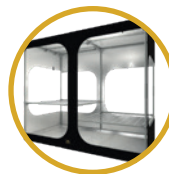


**DR300W**  
297x150x217 cm

The Dark Room grow tent is designed for plants measuring 50 to 150cm tall, with grow spaces of 2.25 to 9.00 m<sup>2</sup>.

It features Ducting Flangess (DF25) for managing intake/exhaust and comes with everything you need to install the complete system.

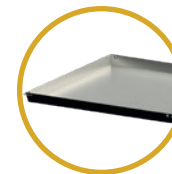
The grow tent comes in a sturdy bag with a shoulder strap.



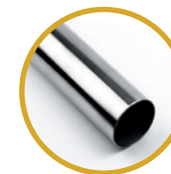
**Accessibility 360°**  
Front Rear & Side



**Fully Pre-equipped**  
Adapt to your needs



**Water tray**  
Strong & Removable



**Stainless Steel**  
Ø25mm Heavy Duty



**100% Lightproof**  
Double-flap zip

## INTENSE

### GROW ROOMS BUILT FOR LARGE GROWING SPACE

See p.40 for Specifications



**INT480**  
470x300x233 cm



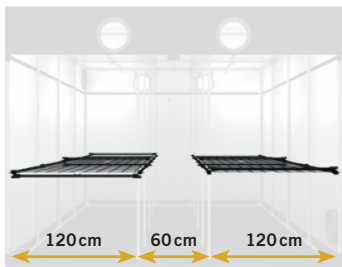
**INT600**  
590x360x233 cm

The Intense grow tent is designed for plants measuring 50 to 150cm tall, with grow spaces of 11.5 to 21.5m<sup>2</sup>.

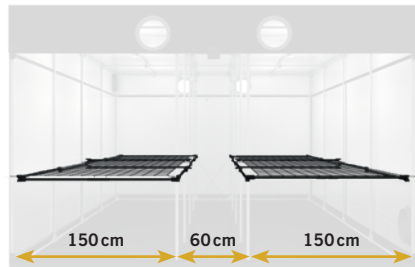
It has a 60cm-wide central corridor so you can access the plants from inside and outside, and features one or two grow spaces on both sides of the corridor, depending on the chosen configuration (accessibility or robustness).

You can also choose not to use the corridor and use the entire area as a grow space, with the Space Booster & WebIT that are sold separately.

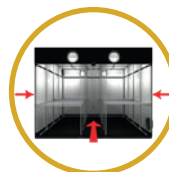
The Intense grow tent features Ducting Flanges (DF25 & DFM315), for managing intake/exhaust and comes with everything you need to install the complete system.



**INT480K**  
INT480 Space Booster & WebIT Kit



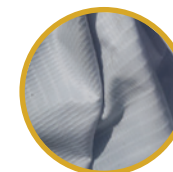
**INT600K**  
INT600 Space Booster & WebIT Kit



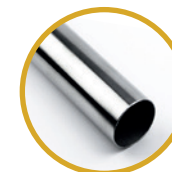
**Accessibility +360°**  
Full plant access



**Fully Pre-equipped**  
Adapt to your needs



**Fibred Liner**  
Strong & Scratch Resistant



**Stainless Steel**  
Ø25mm Heavy Duty



**Fully Linkable**  
Side & Front

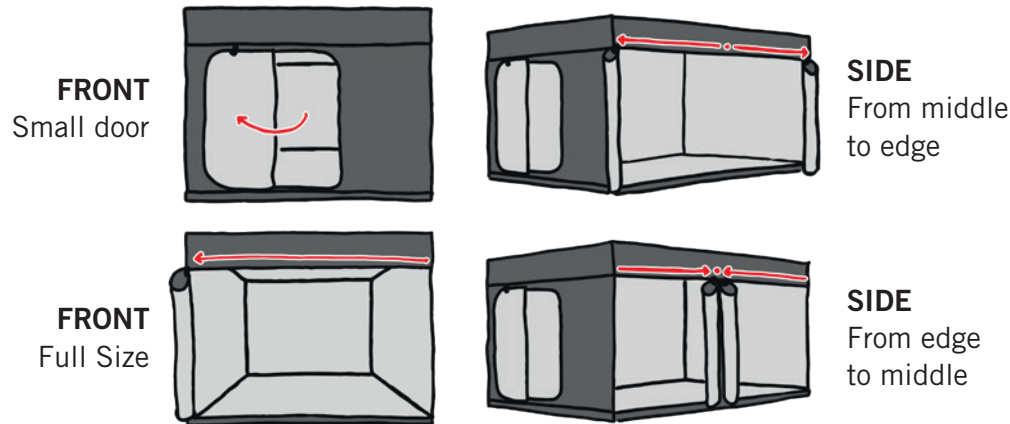
## INTENSE

LINKABLE AND DESIGNED FOR ACCESSIBILITY



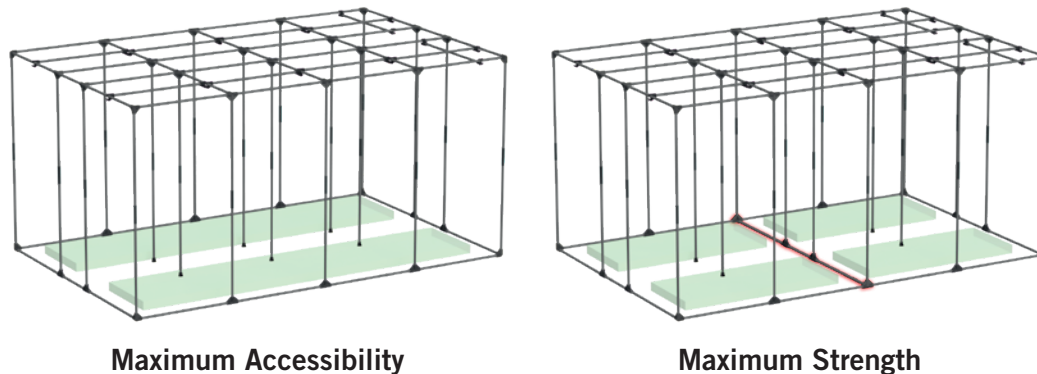
### OPENING METHODS

All 4 sides of the Intense grow tent can be opened individually or together, or even removed for maintenance.



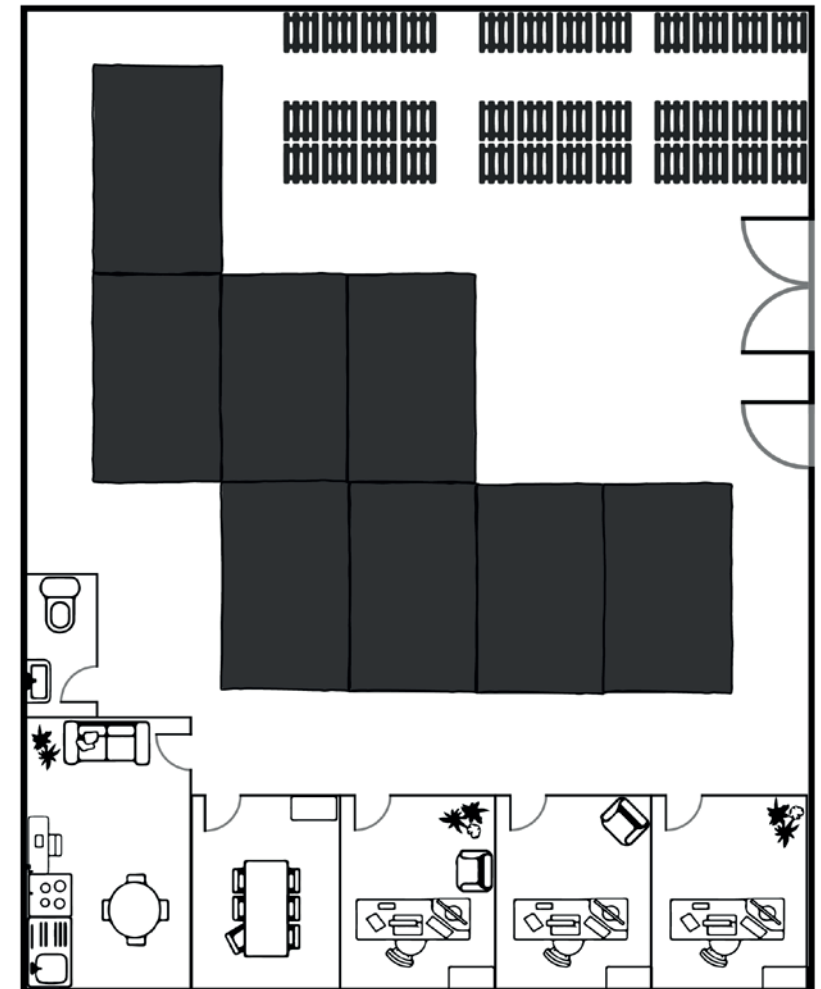
### 2 POSSIBLE CONFIGURATIONS

The Intense grow tent can be set up for two grow areas, for maximum robustness, or used as a single, continuous grow space for maximum accessibility.



### LINKABLE WITH NO EXTRA PARTS!

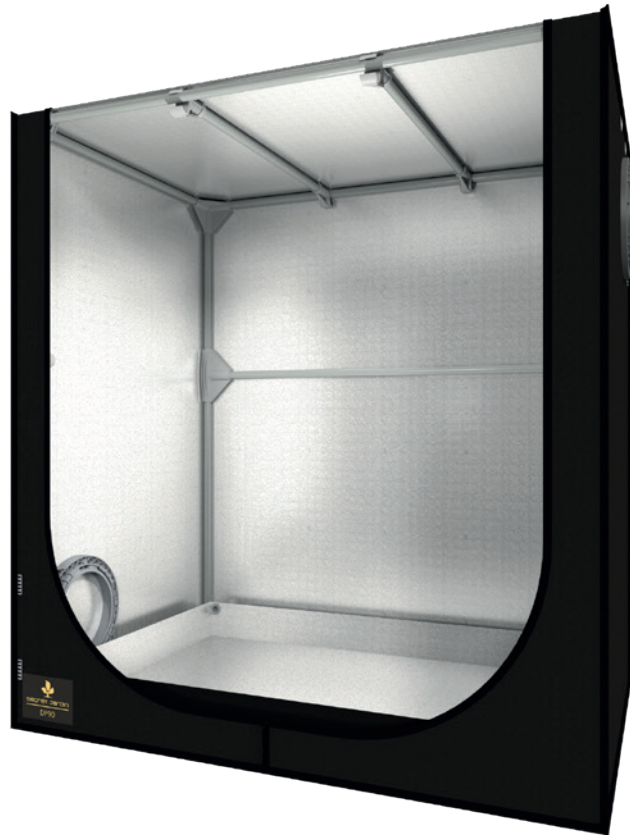
All 4 sides of the Intense grow tent can be connected to each other (480 with 480 & 600 with 600), without requiring any additional parts, which means you can easily create a custom grow room. When the vertical and horizontal zippers are connected, the resulting room is both lightproof and airtight.



## DARK PROPAGATOR

IDEAL FOR CUTTINGS, SEEDLINGS AND MOTHER PLANTS

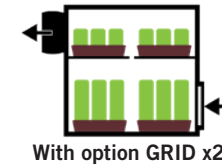
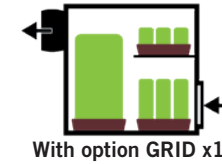
See p.40 for Specifications



**DP60**  
60x40x60 cm



**DP90**  
90x60x98 cm

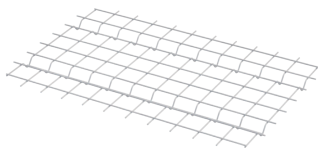


**DP120**  
120x60x190 cm

The Dark Propagator grow tent is designed for plants measuring less than 80cm tall, with grow spaces of 0.24 to 3.60m<sup>2</sup>. These grow tents are ideal for seedlings and small plants, as well as blooming plants with high light requirements when equipped with appropriate lighting.

It features Ducting Flanges (DF16) for managing intake/exhaust and comes with everything you need to install the complete system.

### REMOVABLE SHELF



**GRID6040**  
60x40 cm

Arrange your grow space on multiple levels with these removable grid shelves, which lets you customize your setup for plants of different heights!

**DP120:** 12x included

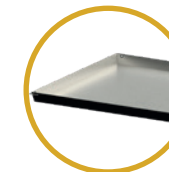
**DP90:** OPTION (sold separately)



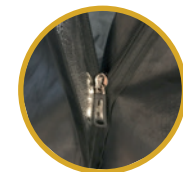
**Removable shelves**  
Option in DP90



**Fully Pre-equipped**  
Adapt to your needs



**Water tray**  
Strong & Removable



**100% Lightproof**  
Double-flap zip







## HYDRO SHOOT

SMALL TENTS – THE ESSENTIAL, WITHOUT COMPROMISE

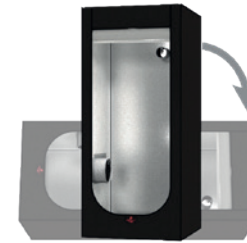
See p.40 for Specifications



**HS40**  
40x40x120 cm



**HS60**  
60x60x158 cm



**HS80**  
80x80x178 cm



**HS100**  
100x100x198 cm

In the vertical position, the «small» Hydro Shoot grow tent is designed for plants measuring 50 to 150cm tall and features grow spaces of 0.16 to 1.00 m<sup>2</sup>.

In the horizontal position, it can be used for plants measuring less than 80cm tall and features grow spaces of 0.16 to 1.44 m<sup>2</sup>.

It features reflective socks for the air intake/exhaust ports. DF16 compatible to add more openings or clip our extractor.

It comes without accessories and can be used with peripherals designed specifically for all our grow tents.



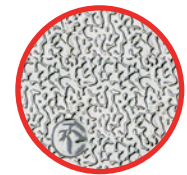
**High & Small Plants**  
Vertical or Horizontal



**Water tray**  
Strong & Removable



**100% Lightproof**  
Double-flap zip

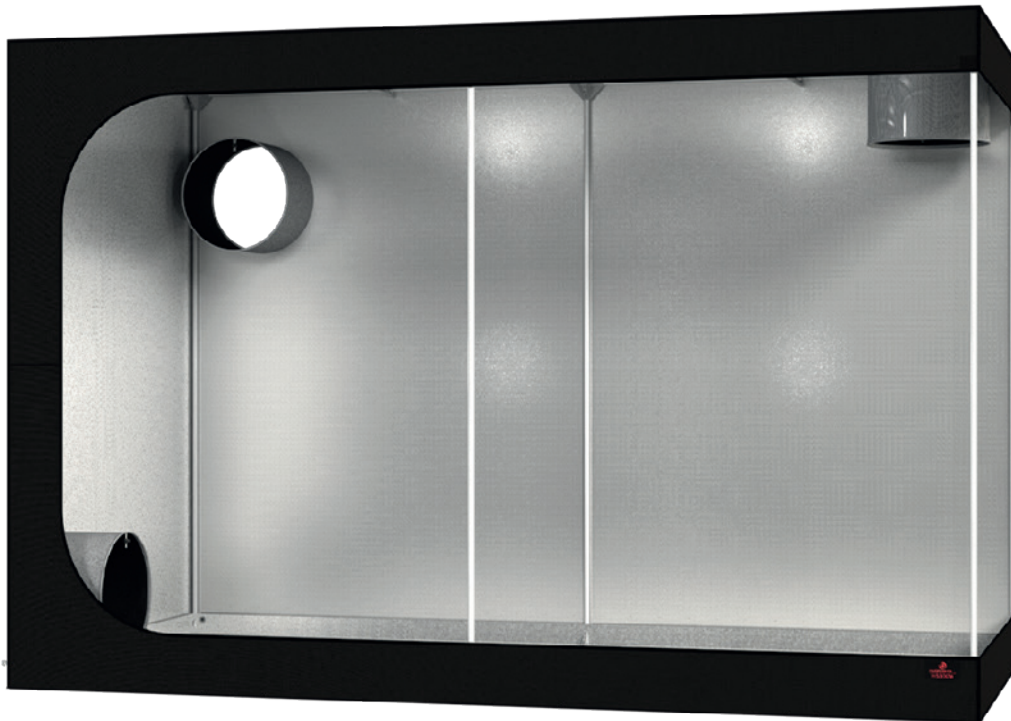


**Reflective Mylar**  
M210D

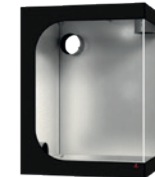
## HYDRO SHOOT

LARGE TENTS – THE ESSENTIAL, WITHOUT COMPROMISE

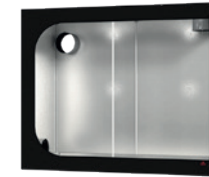
See p.40 for Specifications



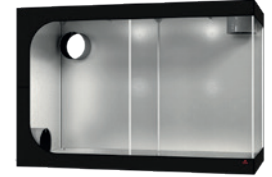
**HS120**  
120x120x200 cm



**HS150**  
150x150x200 cm



**HS240W**  
238x120x200 cm



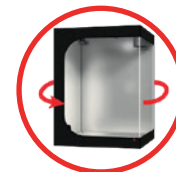
**HS300W**  
298x150x200 cm

The «large» Hydro Shoot grow tent is designed for plants measuring 50 to 150cm tall and features grow spaces of 1.44 to 18.00m<sup>2</sup>.

It is easy to set up and has doors that completely open three sides of the tent for easy access to the plants.

It features reflective socks for the air intake/exhaust ports. DF16 compatible to add more openings or clip our extractor.

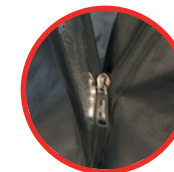
It comes without accessories and can be used with accessories and peripherals designed specifically for all our grow tents.



**Opening 270°**  
Full plant access



**Water tray**  
Strong & Removable



**100% Lightproof**  
Double-flap zip



**Reflective Mylar**  
M210D

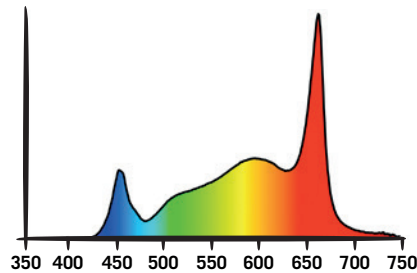
## LIGHTING INTRODUCTION

LIGHTING IS DESCRIBED IN TERMS OF ITS **QUALITY** (SPECTRUM) AND ITS **INTENSITY** (P.A.R.).



### LIGHT QUALITY: SPECTRUM

Light is made up of photons that travel in waves. We characterize them with their wavelengths. The photons that affect plants are found in the range between ultraviolet and infrared, near the visible end of the spectrum, at wavelengths between 350 and 750 nm.



- **Near UV (350-380 nm):** These wavelengths help fight certain microorganisms and improve plants' immune systems.
- **Visible (380-700 nm):** This is the range of light that is used in photosynthesis. Plants absorb mainly blue and red light. In general, blue light (430-500nm) promotes growth and red light (630-680nm) promotes blooming and fruiting.
- **Near IR (700-750 nm):** Also known as "Deep Reds", they act as radiant heaters and help sun-loving plants to grow tall.

### LIGHT INTENSITY: PAR (PPE, PPF, PPFD)

Only photons with wavelengths between 400 and 700 nm (close to the visible range) contribute to photosynthesis. These photons are called "Photosynthetically Active Radiation". The PAR of a lighting system can be measured when it is used alone (PPF-PPE) or within a complete growing configuration (PPFD).

#### PPF FLUX (Measured in laboratory):

The lamp is placed in an Ulbricht sphere, and the number photons it emits every second is measured. This gives the "Photosynthetic Photon Flux", (PPF, measured in  $\mu\text{mol/s}$ ), which assesses the potential photosynthetic power of the lighting system.



#### CLONING

0-100	100-200	200-300	300-400	400+
-------	---------	---------	---------	------

#### GROWING

300-400	400-500	500-600	600-700	700+
---------	---------	---------	---------	------

#### FLOWERING / FRUCTIFICATION

600-800	800-1000	1000-1200	1200-1400	1400+
---------	----------	-----------	-----------	-------

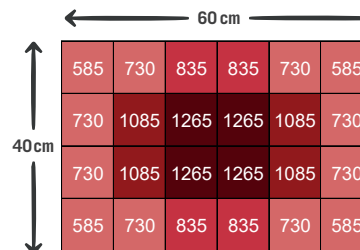
Average PPFD ( $\mu\text{mol/s/m}^2$ )

#### PPE EFFICACY (Measured in laboratory):

Dividing the PPF by the electricity used gives the "Photosynthetic Photon Efficacy" (PPE, measured in  $\mu\text{mol/s/w}$  or  $\mu\text{mol/j}$ ), which is used to assess the potential photosynthetic efficacy of a lighting system per watt consumed. Here are some examples of PPE values: Compact fluorescent lights (CFL, TCL, T5, etc.) around 1  $\mu\text{mol/s/w}$ , discharge lights (HPS, MH, CMH, etc.) around 2  $\mu\text{mol/s/w}$ , light-emitting diodes (LED): 2 to 3  $\mu\text{mol/s/w}$  at present.

#### PPFD FLUX DENSITY (Measured in a grow system):

We measure the PPFD inside a complete grow system, including lighting as well as grow tent. The number of photons received by the grow space per square meter are measured every second. This is called the "Photosynthetic Photon Flux Density", (P.P.F.D. measured in  $\mu\text{mol/s/m}^2$ ). This makes it possible to evaluate the real photosynthetic power, per  $\text{m}^2$  of a grow space. The PPFD is represented by a top view of the grow space, with measurements taken every 10 x 10 cm.



At 45° latitude, the average PPFD given by the sun, will be:

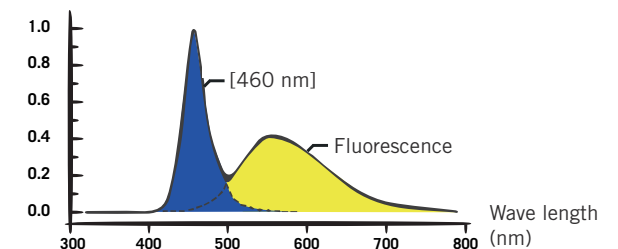
Winter	200 $\mu\text{mol/s/m}^2$
Spring	400 $\mu\text{mol/s/m}^2$
Summer	800 $\mu\text{mol/s/m}^2$
Autumn	300 $\mu\text{mol/s/m}^2$

To simplify, we have specified three colors for three PPFD levels.

<b>Cloning:</b>	Less than 300 $\mu\text{mol/s/m}^2$ <i>Propagation, seedling, light growth, vegetative.</i>
<b>Growing:</b>	300 to 600 $\mu\text{mol/s/m}^2$ <i>Growing of sun-loving plants, intensive growing of shade-loving plants.</i>
<b>Flowering / Fructification:</b>	Over 600 $\mu\text{mol/s/m}^2$ <i>Intensive growing of sun-loving plants.</i>

### DIFFERENT LEDS TYPES

There are two main types of LEDs. Monochrome LEDs emit photons that vibrate at a single frequency. Depending on their wavelength, they are called: 450 nm blue, 660 nm red, etc. White LEDs have a broader spectrum. White LEDs are in fact a monochrome blue LED with a phosphor coating that shifts and flattens the spectrum towards yellow by decreasing the energy of certain photons.



Depending on their color temperature, in Kelvin, they are called: 6500°K Cool White, 5000/4000°K Warm White, 3000/2700/2100°K Yellow White. This method produces LEDs that can be used for everyday lighting as well as for growing, due to their broader spectrum.

## COSMORROW TECHNOLOGY

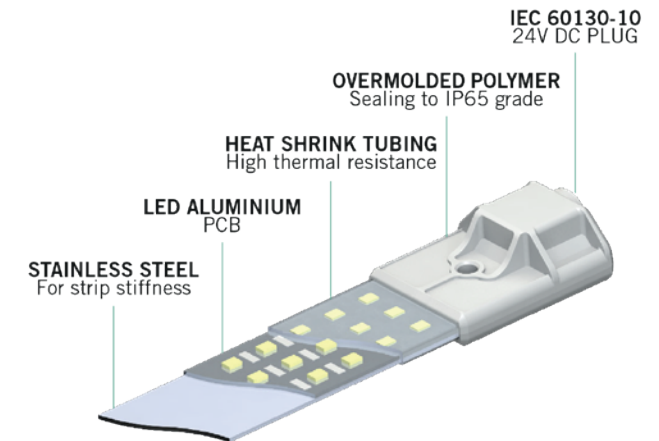
COMPACT, SOLID, WATER PROOF, DURABLE, SAFE (24V)



The “Cosmorrow LED” is a compact, durable, waterproof 24V LED light. It can be screwed in, clipped, or hung, using the fasteners included in the “Cosmorrow Power Supply”, which is sold separately.

“Cosmorrow LED” lights are available with two wattages - 20W / 50cm and 40W / 70 or 90 cm - and four colors: Growing, Full Spectrum, Ultraviolet, and Infrared.

It uses a standard “DC 5.5\*2.1 x 10mm plug” that is watertight thanks to the addition of a lip during the molding process and can be used with all types of standard 24V power supplies.



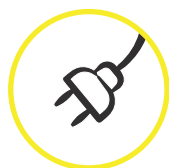
**Patent n°W02021176302**



**Waterproof**  
IP65



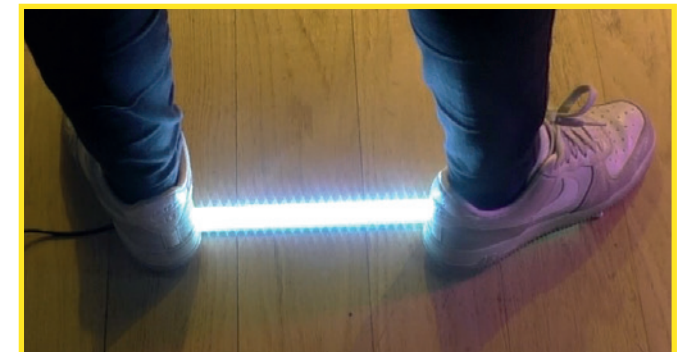
**Strong**  
Fall resistant



**100% safe**  
24V Bulbs



**Compact**  
Low Power





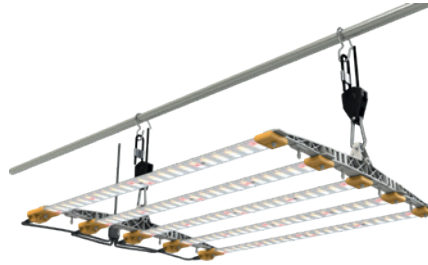
## COSMORROW KITS

### FULL SPECTRUM LIGHTING KITS

See p.42 for Specifications



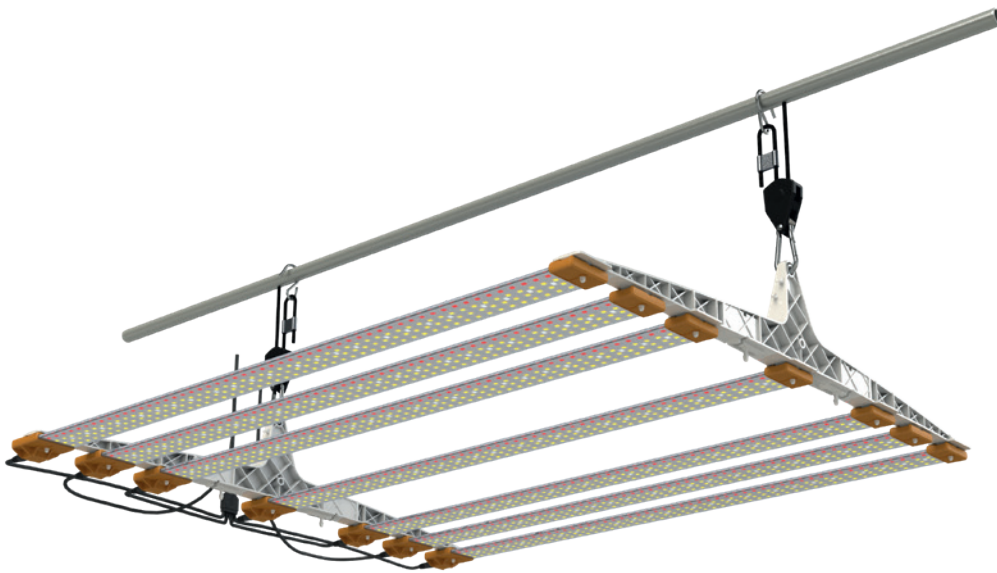
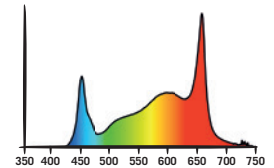
**COM60FS**  
Cosmorrow Kit 60W  
Full Spectrum



**COM100FS**  
Cosmorrow Kit 100W  
Full Spectrum



**COM200FS**  
Cosmorrow Kit 200W  
Full Spectrum



280W Upgrade example:  
COM200FS + 2x COP40FS + 2x COM40

Cosmorrow kits are complete lighting systems for high-intensity light requirements. Its patented Cosmorrow modular technology has made the Cosmorrow Full Spectrum Kit waterproof, durable (>50.000 hours) and very sturdy with the best light coverage area on the market.

It also allows for easy maintenance and upgrades by disconnecting and replacing individual light bulbs.

The hanger allows fitting additional Cosmorrow bulbs (optional) for even higher intensity lighting:

COM60FS and COM100FS can be upgraded by adding 20W Cosmorrow Full Spectrum bulbs and 20W power supplies

COM200FS can be upgraded by adding 40W Cosmorrow Full Spectrum bulbs and 40W power supplies.



**+20% yield**  
Largest Footprint



**100% Safe**  
24V Bulbs



**Water Jet Resistant**  
IP65



**High Durability**  
Strong & Fall resistant

## TNOLED KITS

### GROW SPECTRUM LIGHTING KITS

See p.42 for Specifications



**UPGRADABLE**  
60W

**TN040GR**

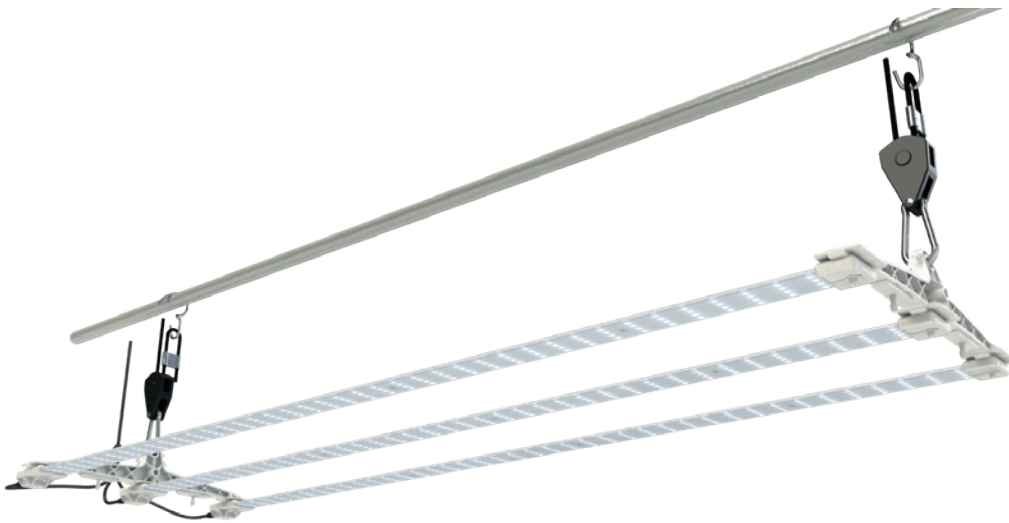
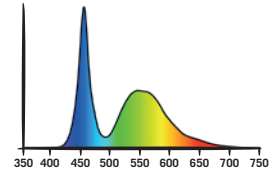
TNoled 2x20W Growing



**UPGRADABLE**  
120W

**TN080GR**

TNoled 2x40W Growing



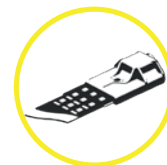
120W Upgrade:  
TN080GR + COP4065

TNoled kits are complete lighting systems for medium to high intensity light requirements. Its patented Cosmorrow modular technology has made the TNoled kit waterproof, durable (>50.000 hours) and very sturdy with the best light coverage area on the market.

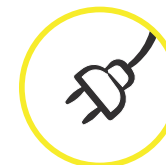
The hanger allows fitting an additional Cosmorrow bulb (optional) for higher intensity lighting:

TN040GR can be upgraded by adding one 20W Cosmorrow Growing bulb.

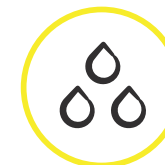
TN080GR can be upgraded by adding one 40W Cosmorrow Growing bulb.



**Cosmorrow Technology**



**100% Safe**  
24V Bulbs



**Water Jet Resistant**  
IP65



**High Durability**  
Strong & Fall resistant

## COSMORROW

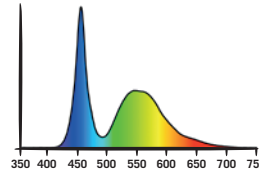
### BULBS



See p.42 for Specifications

### GROW SPECTRUM BULBS

6500K Cold White light ideal for cloning and growing stage setups.



#### COP2065

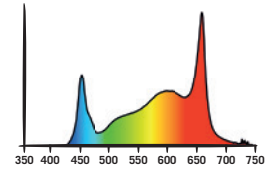
Cosmorrow Led 20W L50cm  
GROW SPECTRUM PPE2.7

#### COP4065

Cosmorrow Led 40W L90cm  
GROW SPECTRUM PPE2.7

### FULL SPECTRUM BULBS

High light intensity with a wide spectrum great for the full plant cycle, including flowering stage.



#### COP20FS

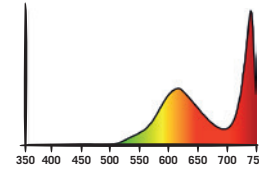
Cosmorrow Led 20W L50cm  
FULL SPECTRUM PPE2.85

#### COP40FS

Cosmorrow Led 40W L70cm  
FULL SPECTRUM PPE2.85

### INFRARED BOOSTERS

Promotes longer internode growth and provides heat to your plants with a mix of infrared LEDs and 2100K light.



#### COL20IR

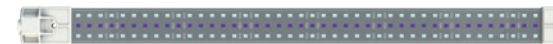
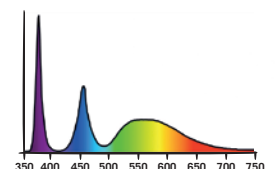
Cosmorrow Led 20W L50cm IR

#### COL40IR

Cosmorrow Led 40W L90cm IR

### ULTRAVIOLET BOOSTERS

A mix of UV-A and 6500K light to promote shorter internode growth for bushier plants, boost your plants' immunity and prevent formation of mould in your tent.



#### COL20UV

Cosmorrow Led 20W L50cm UV

#### COL40UV

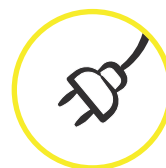
Cosmorrow Led 40W L90cm UV



**Waterproof**  
IP65



**Strong**  
Fall resistant



**100% safe**  
24V Bulbs



**Compact**  
Low Power

## COSMORROW

### POWER SUPPLIES & PARTS FOR INTEGRATION

See p.42 for Specifications

## COSMORROW POWER SUPPLIES

Our 24V Cosmorrow power supplies are provided with mounting clips, according to the number of LED strips supported.



**COM20**

Cosmorrow Power 1x 20W

**COM40**

Cosmorrow Power 1x 40W



**COM3X20**

Cosmorrow Power 2/3x 20W



**COM2X20**

Cosmorrow Power 2x 20W

**COM2X40**

Cosmorrow Power 2x 40W



**COM5X20**

Cosmorrow Power 4/5x 20W

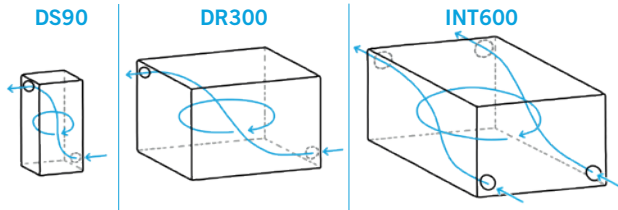
## VENTILATION INTRODUCTION

### UNDERSTANDING AIR RENEWAL FOR YOUR TENT



#### HOW TO VENTILATE YOUR GROW TENT

To ensure that the air in your grow tent is the same everywhere, the intake and exhaust ports must be opposite one another, and the air between them must be mixed. In large tents that are long, two exhausts and two intakes may be used.



#### FLOW RATES FOR EXTRACTORS AND FILTERS

The capacity in m<sup>3</sup>/h indicated on the extractors are measured without a filter and without external constraints (in the open air). A filter with a capacity at least equal to that of the extractor must be used. Using a filter will reduce the extractor's flow by 30%, up to 50% when it is old. Using a passive "Ducting Flange with Light Baffle" intake on a Secret Jardin grow tent will reduce the flow by 40%. Example for a 120x120cm DS120: 350m<sup>3</sup>/h without filter, for a flow of 275m<sup>3</sup>/h with a filter and 160m<sup>3</sup>/h in the tent with a filter & light baffle: The air is renewed every 1 to 2 minutes, depending on the filter's condition (160m<sup>3</sup>/h / 60min / 2.9m<sup>3</sup> = 0.9 times per min).

#### EXTRACTION FREQUENCY

We suggest three ventilation levels based on the time needed to completely replace the air inside the tent:

- **1 to 2 min:** Grow & Intensive Grow, with temperature issues (Outdoor air > 25 °C or Lighting too hot, such as open HPS)
- **2 to 4 min:** Grow & Intensive Grow, without temperature issues
- **4 to 8 min:** Propagation, seedlings, light growth, vegetation, no temperature problems

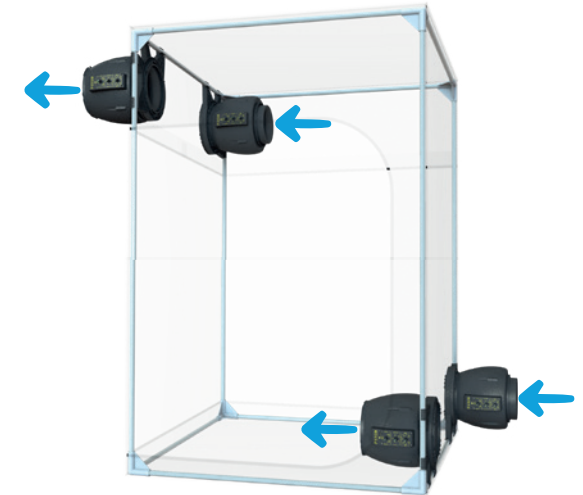
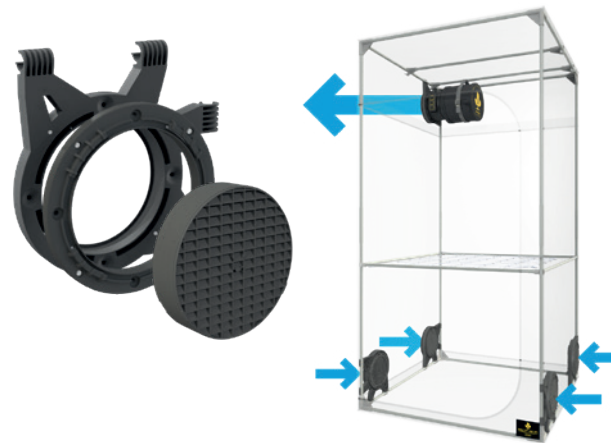
Ideally, extraction should be used only to allow the plants to breathe. We design our products so that you do not need to "over-ventilate" them, if the incoming air is between 15 and 25 °C and if your lighting system is cool (e.g. ventilated LED or HPS).

#### SPACE BOOSTER OR INTRACTION?

For the outer envelope to hold the frame securely in place, there must be negative air pressure in the grow tent. This also prevents odours from being emitted, with the addition of a filter. The larger the grow tent, the more this negative air pressure will encroach on your grow space, in some cases even causing your tent to implode. If the grow tent is too large, an intake must be added, which should not exceed 70% of the extraction in order to keep the air pressure inside the tent negative. Without the Space Booster, which is provided with our pre-equipped grow tents, you will need to add this intake starting from 120x120cm or 100x100cm tents. With the Space Booster, an intake must be added with tents starting from 150x150cm, or even more if you change the air infrequently, as is the case during propagation.

#### CREATING PASSIVE INTAKES

Installing a Ducting Flange and Light Baffle on your tent provides a lightproof opening to let more air inside the tent. This relieves the stress from the negative negative pressure inside the tent and allows your extractor to run at a lower rate while maintaining air renewal and homogenizing the exchange



#### INSTALLING THE EXTRACTOR AND FILTER

Using a DF16 Ducting Flange allows to directly attach Secret Jardin extractors and filters in a variety of positions.

#### 4 POSSIBLE POSITIONS

EXTRACTOR INSIDE	INTAKE INSIDE
EXTRACTOR OUTSIDE	INTAKE OUTSIDE



## VENTILATION TIPS

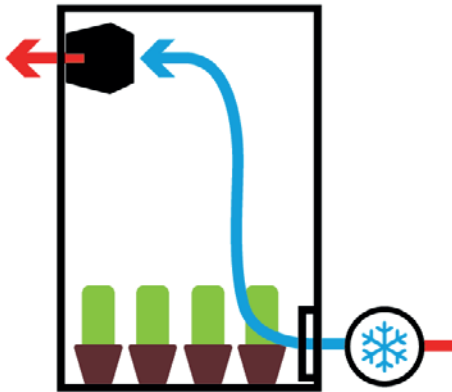


### SOME TIPS TO COOL YOUR TENT

Sometimes, the outdoor temperature is too high and it can be difficult to cool your tent. When this is the case, consider the following suggestions to reduce your tent's temperature.

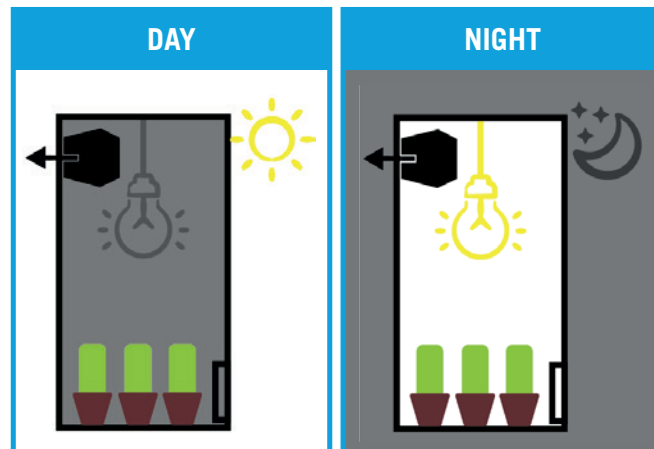
#### OPTION 1 COOL INCOMING AIR

Cool the incoming air or connect a duct to a cooler location.



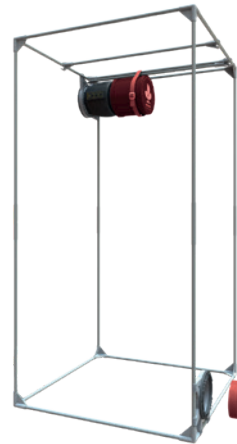
#### OPTION 2 SWITCH LIGHTING ON AT NIGHT

Use your lamps at night when the outside temperature is coolest.



#### OPTION 3 REMOVE FILTER / LIGHT Baffle

Removing the filter and/or light baffle will improve air renewal in your tent. Depending on your plants, this may be a simple option to try.



NO FILTER

+35% VENTILATION

NO LIGHT Baffle

+50% VENTILATION

NO FILTER  
NO LIGHT Baffle

+70% VENTILATION

#### OPTION 4 ADD PASSIVE INTAKES

Install additional Ducting Flanges and Light Baffles to increase the incoming air supply and improve air renewal



+ 1x (DF16+DF16LB)

+35% VENTILATION

+ 2x (DF16+DF16LB)

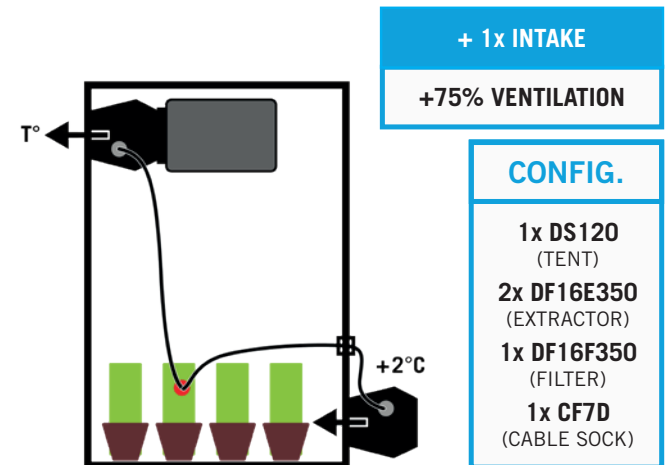
+50% VENTILATION

+ 3x (DF16+DF16LB)

+70% VENTILATION

#### OPTION 5 USE AN EXTRACTOR AS INTAKE

In case of overheating, if you have to keep your filter (extraction) and Light Baffle (intake), add an "intractor" to increase the flow. Attach the T° probes together (enter the intractor's probe with a CF7D), add 2°C more in intraction and put the same values for "Ext. Max." & "Ext. Min" on both devices.



### HUMIDITY CONTROL TIPS

The "EXT MIN" (minimum extraction) function of the extractor will ensure that relative humidity does not exceed a given level:

- ~10%: increase humidity  
*Clones, seeds, tropical plants*
- ~25%: moderate effect on humidity  
*Springtime plants (growing)*
- ~50%: decrease humidity  
*Summertime plants (flowering)*

## EXTRACTORS & FILTERS



### CONTROL YOUR GROW TENT ATMOSPHERE

Designed to clip on to our Ducting Flange system, it takes less than 5 seconds to assemble without any tools. Our extractors include temperature control functions (T°, Max/min extractor speed) and 2 thermal sensors (onboard or external) depending on the size of your grow space. Our filters contain CTC80 activated carbon, which has the highest gas absorption for optimal odour control. Use them in combination with our DF16 filter for optimal assembly! You can also use your Secret Jardin extractor without a Ducting Flange using DF16 Connectors and regular ducting.

#### DF16E150

DF16 Extractor T° 50/100/150m³/h



#### DF16E350

DF16 Extractor T° 150/250/350m³/h



#### DF16F100

Filter CTC80 0.4 kg 100m³/h



#### DF16F150

Filter CTC80 1.0 kg 150m³/h



#### DF16F250

Filter CTC80 1.5 kg 250m³/h



#### DF16F350

Filter CTC80 2.0 kg 350m³/h



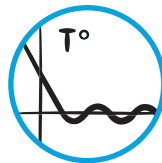
**DF16 Technology**  
No tools needed



**EC Motor**  
24 V



**Max/Min Airflow**  
User controlled



**Intelligent Speed Control**



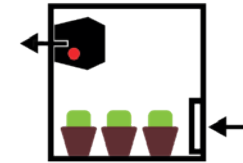
**High Quality Carbon**

See p.43 for Specifications

### 2 THERMAL SENSORS

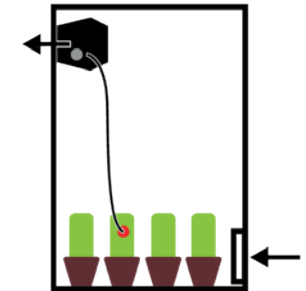
#### CONFIGURATION 1

INTEGRATED SENSOR



#### CONFIGURATION 2

2<sup>nd</sup> THERMAL SENSOR



### CONNECT TO DUCTING FLANGE



### CONNECT TO REGULAR DUCTING



## DUCTING FLANGE



### INTAKE AND EXTRACTION WHEREVER YOU NEED

Make your grow tent more versatile. The Ducting Flange allows you to create vents anywhere on your tent and simplifies your configuration. With their 100% airtight design, you can easily connect filters, ducts and extractors. When used with the Light Baffle, the Ducting Flange is also a completely lightproof air intake.



#### CONNECTORS FOR DF16



#### CONNECTORS FOR DF25



**Easy to install**  
On poles or tent fabric



**Choose your placement**  
Front, sides, backside, tent roof



**Robust Design**  
Supporting up to 3kgs/6lbs



**Can be plugged up**  
PatchIT 16 & 25

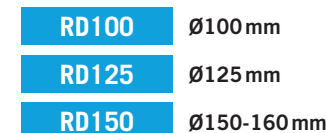
### MOBILE DUCTING FLANGE

The Mobile Ducting Flange allows you to install a Ø315mm rigid flange wherever you want on a flexible wall. With the cutting tool provided, you can easily position the product and cut through any material that is up to 2.5 mm thick.



### RUBBER DUCTS

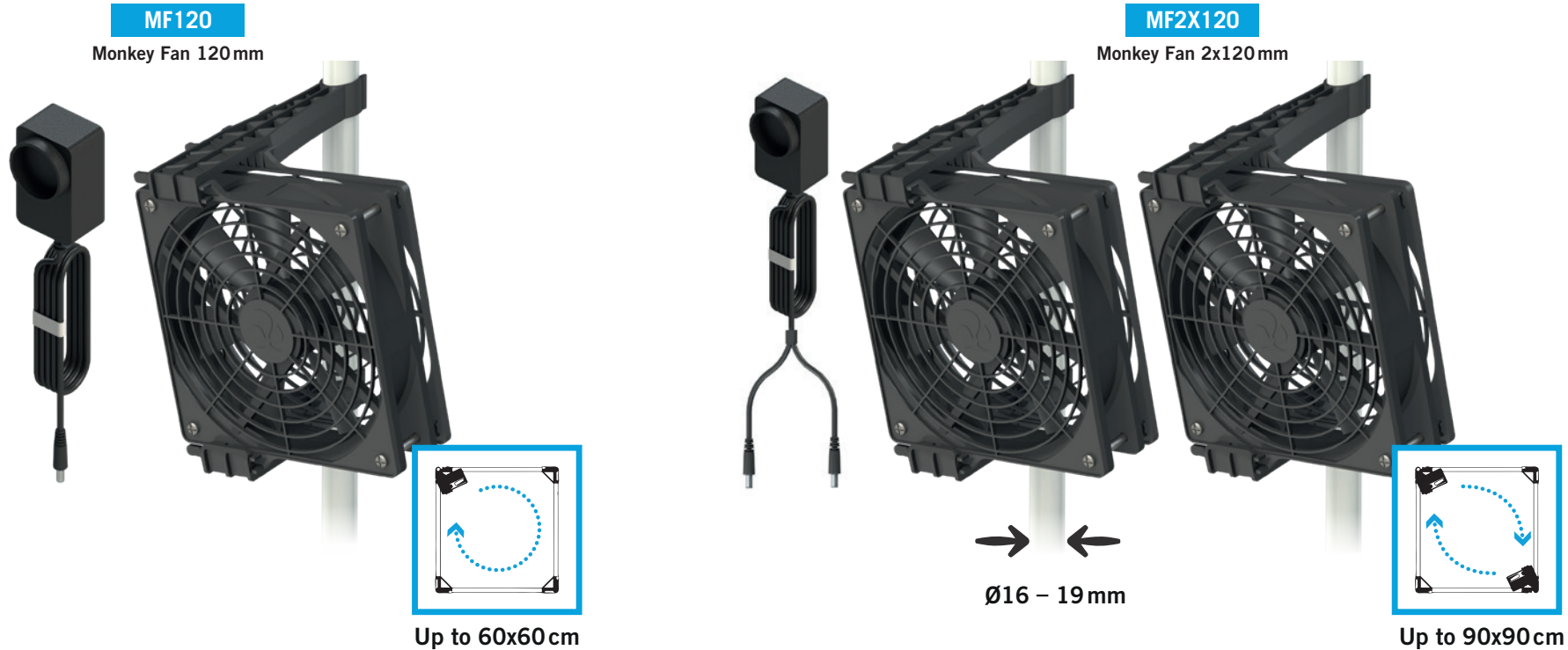
Use Connectors and Rubber Ducts to create a variety of setups, with or without Ducting Flanges.



## MONKEY FAN 24V



See p.43 for Specifications



### EASIEST WAY TO ENSURE AN EVEN AIR CIRCULATION INSIDE YOUR GROW TENT.

These fans are designed to clip quickly on 16 to 19mm poles (0,63 to 0,75 inch). Enjoy low noise and extended lifetime thanks to the brushless DC 24V motor. The small size of these fans allows you to optimize your grow area. Use them 15° upward or downward to blow air from over or under of the canopy. Available in packs of 1, or 2 pieces depending on your grow area.



**100% safe**  
24V



**Low Consumption**  
2W for 100m³/h per fan



**Ultra Compact**  
Design



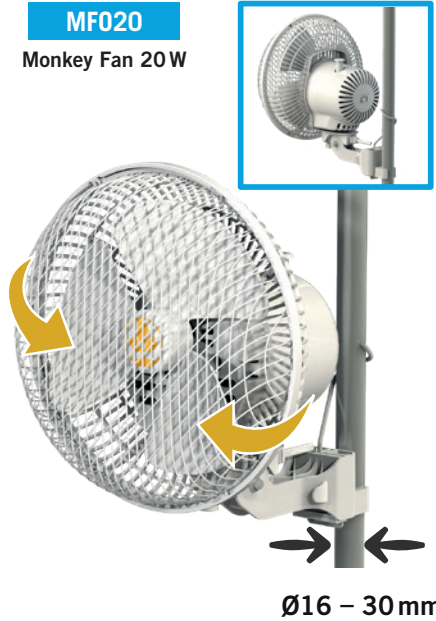
**Long Life**  
30 000h

## MONKEY FAN 220V



See p.43 for Specifications

**MF020**  
Monkey Fan 20W

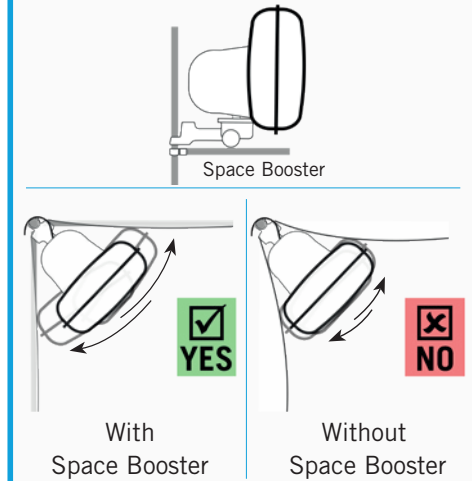


**MF30**  
Monkey Fan 30W

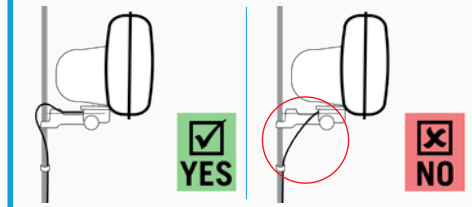


### CAUTION (MF020)

#### SPACE BOOSTER



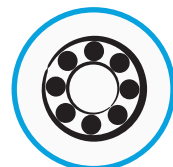
#### CABLE POSITION



### THE FAN THAT CLINGS EVERYWHERE

This clip-on fan is compatible with all grow tents, equipped with a ball bearing, making it the perfect solution for circulating the air in your tent. The fan comes with three fasteners to fit tubes from 16 to 30 mm in diameter.

The product's lifespan is optimised with the use of a new cold-resistant grease and the use of a high durability ball bearing.



Ball Bearing



Height Adjustable



Silent



## ACCESSORIES FOR YOUR GROW TENT



### DRY YOUR PLANTS

Our DryIT is a dryer that you can access from every angle. It is equipped with a hook so you can hang them to each other or to the handling tube in your grow tent, after your harvest. Thanks to its rotor, you can access the dryer from every angle just by turning it inside the tent. The DryIT90 comes with a carrying case that takes up very little space when folded.



**DRYIT45**

DryIT Ø45cm Linkable

Dryer 1 Layer linkable up to 3 units

0.5 kg / Dryer – 1.5 kg & 0.5 m² of drying space max



**DRYIT90**

DryIT Ø80cm 5 Layers H150cm

Dryer 5 Layers of 20 cm

1.0 kg / layer – Bottom washable – Bag inc. – Rotating

### SUPPORT YOUR PLANTS

The WebIT & WebTH supports your plants in the centre of your tent without sagging. There is a hook and an elastic in each corner for easy installation. The smaller WebTH (up to 120x120cm) are made of thread netting with a fixed mesh. The larger WebIT (120x120cm and up) are made of elastic, which means they can adapt to intermediate sizes.

#### THREAD WEB PLANT SUPPORT

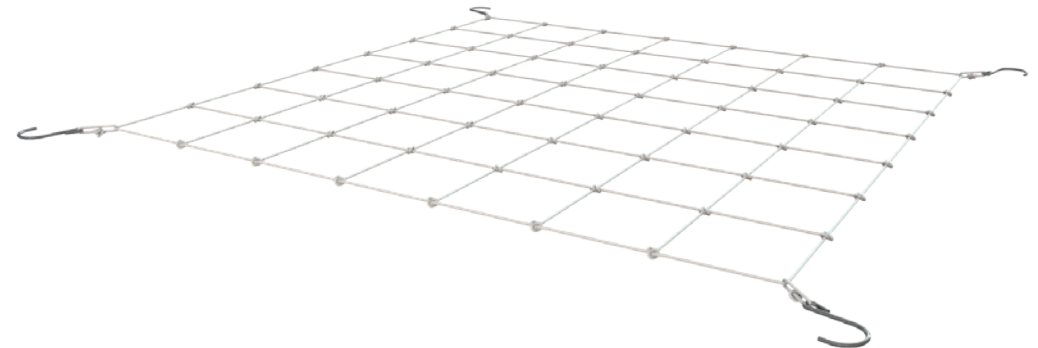
Mesh Size = 10x10 cm

<b>WEBTH60</b>	60x60cm	<b>WEBTH60W</b>	60x40cm
<b>WEBTH90</b>	90x90cm	<b>WEBTH120W</b>	120x60cm
<b>WEBTH120</b>	120x120cm	<b>WEBTH150W</b>	150x75cm

#### ELASTIC WEB PLANT SUPPORT

Mesh Size ≈ 12x12 cm

<b>WEBIT120</b>	120x120cm	<b>WEBIT240W</b>	240x120cm
<b>WEBIT150</b>	150x150cm	<b>WEBIT300W</b>	300x150cm



### HEAT YOUR PLANTS

Provide some extra heat to your plants when the weather is cooler. We recommend using a heat mat when the ambient temperature is between 15-20°C for all plants and 15-25°C for clones and seeds. The heat mat will automatically turn off when the temperature reaches 24°C. Compatible with COM20 power supply.



**HM20**

Heating Mat 55x35cm 20W



**COM20**

Cosmorrow Power  
1x 20W

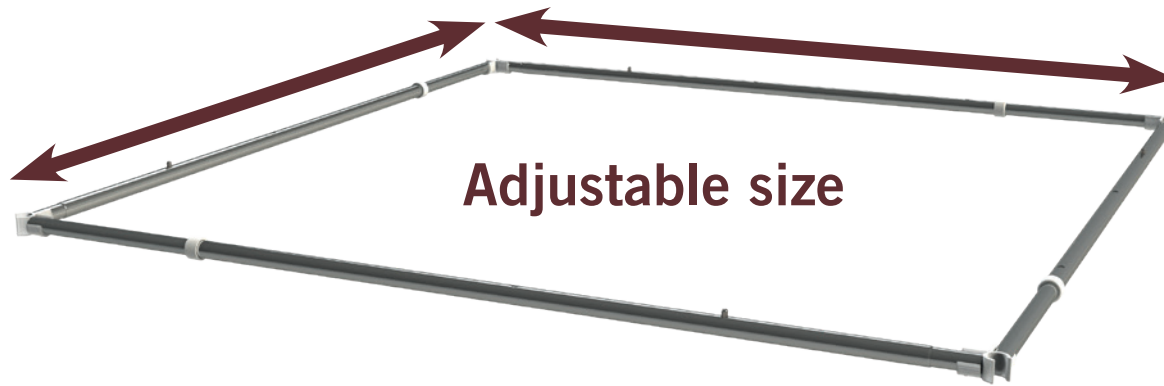
## ACCESSORIES FOR YOUR GROW TENT



### INCREASE YOUR GROW SPACE

Increase your grow space by up to 25% with our Space Boster system. It keeps the grow tent material away from your plants during high-power extraction. It reinforces your tent and keeps it from imploding. It can also be used to keep the WebIT in place.

The Space Booster is available in three extensible sizes to fit a variety of grow tents.



**Adjustable size**

#### SPACE BOOSTER

Compatible with poles Ø16 to Ø19 mm.

**SB-S**

Small version:  
from 60x60 to 90x90 cm

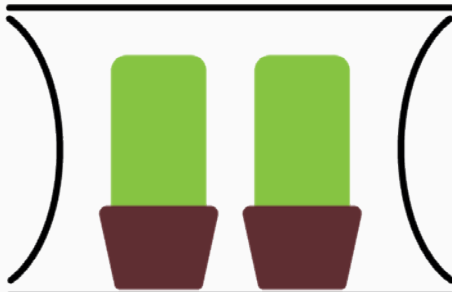
**SB-L**

Large version:  
from 100x100 to 150x150 cm

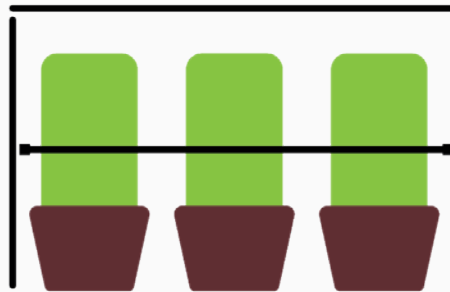
**SB-W**

Wide version:  
from 60x100 to 90x150 cm

#### WITHOUT SPACE BOOSTER



#### WITH SPACE BOOSTER



### ROUTE HOSES AND CABLES INTO YOUR TENT

Cut, assemble, screw: It's never been easier to create intakes/exhausts wherever you want on your grow tent to make cable and hose routing a snap.

The Cable Flange, which consists of a double sock with tightening straps, creates ports that are 70 mm in diameter. A cutting tool is included.



**CF7D**

Cable Flange Double Socks Kit

## KIT CONTENTS



## DARK STREET

REF	DESIGNATION	STRUCTURE					HANDLING POLES INCLUDED					SPACE BOOSTER INCLUDED				
		DS60	DS90	DS120	DS120W	DS150W	DS60	DS90	DS120	DS120W	DS150W	DS60	DS90	DS120	DS120W	DS150W
T16-60	Pole Ø16 mm 560 mm	12			4		2					4			2	
T16-90	Pole Ø16 mm 860 mm		16		8			2					4			
T16-100	Pole Ø16 mm 960 mm	4														
T16-120	Pole Ø16 mm 1160 mm				4				2						2	
T16-Link	Link Ø16 mm	4	4		4											
C16-Y	Corner Ø16 mm 3 axes Y shape	8	8		8											
C16-H	Handling Corner Ø16 mm						4	4		4						
C16-SB	Space Booster Ø16 mm											4	4		4	
T19-75	Pole Ø19 mm 726 mm					12					4					6
T19-100	Pole Ø19 mm 975 mm			8		8										
T19-120	Pole Ø19 mm 1153 mm			8					2					4		
T19-Link	Link Ø19 mm			4		8					2					2
C19-Y	Corner Ø19 mm 3 axes Y shape			8		8										
C19-H	Handling Corner Ø19 mm								4		4					
C19-SB	Space Booster Ø19 mm													4		4

## DARK PROPAGATOR

REF	DESIGNATION	STRUCTURE			HANDLING POLES		
		DP60	DP90	DP120	DP60	DP90	DP120
T16-40	Pole Ø16 mm 360 mm	4	4	20	2		
T16-60	Pole Ø16 mm 560 mm	8	8	6		2	
T16-90	Pole Ø16 mm 860 mm		6				
T16-120	Pole Ø16 mm 1160 mm			12			1
C16-Y	Corner Ø16 mm 3 axes Y shape	8	8	8			
C16-K	Corner Ø16 mm 4 axes K shape			4			
C16-T	Corner Ø16 mm 3 axes T shape		4	12			
C16-H	Handling Corner Ø16 mm				4	4	2
GRID6040	Grid 60 x 40 cm	—	<i>Option</i>	12			

## DARK ROOM

REF	DESIGNATION	STRUCTURE					HANDLING POLES INCLUDED					SPACE BOOSTER INCLUDED				
		DR150	DR240	DR300	DR240W	DR300W	DR150	DR240	DR300	DR240W	DR300W	DR150	DR240	DR300	DR240W	DR300W
T25-75	Pole Ø25 mm 717 mm	16		40		26	6		20		10	8		24		16
T25-100	Pole Ø25 mm 967 mm	4	18	9	12	6										
T25-120	Pole Ø25 mm 1134 mm	4	20	9	13	6		9		5			12		8	
T25-Link	Link Ø25 mm	12	9	29	6	19	3		10		5	4		12		8
C25-Y	Corner Ø25 mm 3 axes Y shape	8	8	8	8	8										
C25-K	Corner Ø25 mm 4 axes K shape		4	4	2	2										
C25-T	Corner Ø25 mm 3 axes T shape		4	4	2	2										
C25-XI	Corner Ø25 mm 5 axes XI shape		1	1												
C25-H	Handling Corner Ø25 mm						6	18	20	10	10					
C25-SB	Space Booster Ø25 mm											8	24	24	16	16
C25-RF	Rubber Feet Ø25 mm		1	1												

## INTENSE

REF	DESIGNATION	STRUCTURE		HANDLING POLES INC.		SPACE BOOSTER INC.	
		INT480	INT600	INT480	INT600	INT480	INT600
T25-60	Pole Ø25 mm 600 mm	8	8				
T25-75	Pole Ø25 mm 717 mm		80		20		48
T25-120	Pole Ø25 mm 1134 mm	80	40	10		24	
T25-Link	Link Ø25 mm	20	60		10		24
C25-Y	Corner Ø25 mm 3 axes Y shape	8	8				
C25-K	Corner Ø25 mm 4 axes K shape	12	12				
C25-T	Corner Ø25 mm 3 axes T shape	10	10				
C25-XI	Corner Ø25 mm 5 axes XI shape	6	6				
C25-H	Handling Corner Ø25 mm			20	20		
C25-SB	Space Booster Ø25 mm					48	48
C25-RF	Rubber Feet Ø25 mm	6	6				

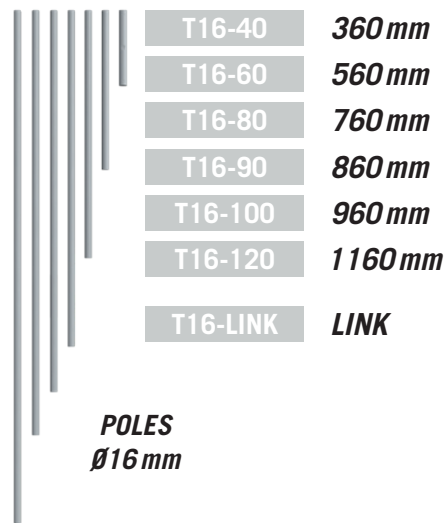
## HYDRO SHOOT (SMALL)

REF	DESIGNATION	STRUCTURE				HANDLING POLES INCLUDED			
		HS40	HS60	HS80	HS100	HS40	HS60	HS80	HS100
T16-40	Pole Ø16 mm 360 mm	8				2			
T16-60	Pole Ø16 mm 560 mm	8	8				2		
T16-80	Pole Ø16 mm 760 mm		8	8				2	
T16-90	Pole Ø16 mm 860 mm			8					
T16-100	Pole Ø16 mm 960 mm				16				2
T16-Link	Link Ø16 mm	4	4	4	4				
C16-Y	Corner Ø16 mm 3 axes Y shape	8	8	8	8				
C16-H	Handling Corner Ø16 mm					4	4	4	4

## HYDRO SHOOT (LARGE)

REF	DESIGNATION	STRUCTURE				HANDLING POLES INCLUDED			
		HS120	HS150	HS240W	HS300W	HS120	HS150	HS240W	HS300W
T19-75	Pole Ø19 mm 726 mm		16		26		4		6
T19-100	Pole Ø19 mm 975 mm	8	8	12	12				
T19-120	Pole Ø19 mm 1153 mm	8		13		2		3	
T19-Link	Link Ø19 mm	4	12	6	19		2		3
C19-Y	Corner Ø19 mm 3 axes Y shape	8	8	8	8				
C19-K	Corner Ø19 mm 4 axes K shape			4	4				
C19-H	Handling Corner Ø19 mm					4	4	6	6

## LIST OF SPARE PARTS



**C16-Y**  
**CORNER 3 AXES**



**C16-T**  
**CORNER 3 AXES**



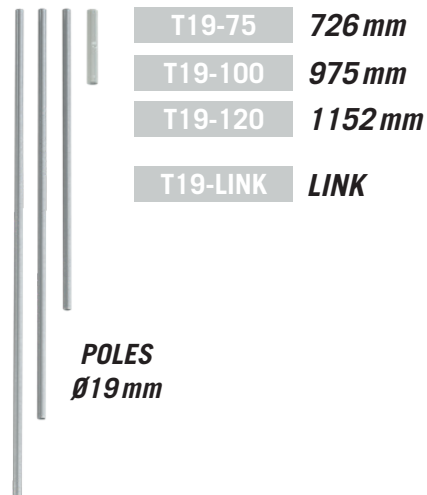
**C16-K**  
**CORNER 4 AXES**



**C16-SB**  
**SPACE BOOSTER**



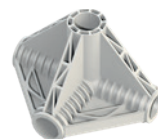
**C16-H**  
**HANDLING CORNER**



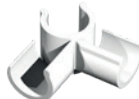
**C19-Y**  
**CORNER 3 AXES**



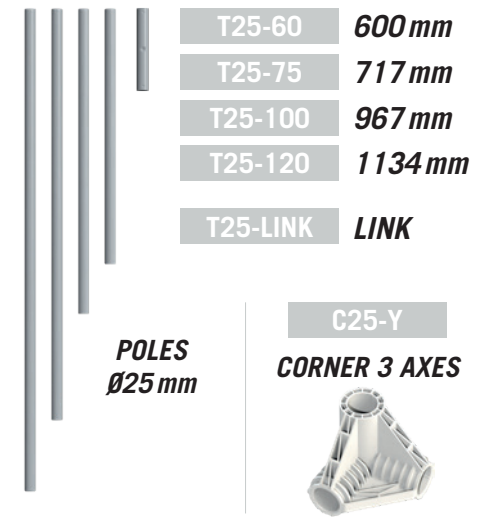
**C19-K**  
**CORNER 4 AXES**



**C19-SB**  
**SPACE BOOSTER**



**C19-H**  
**HANDLING CORNER**



**C25-Y**  
**CORNER 3 AXES**



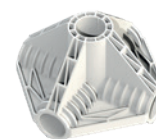
**C25-T**  
**CORNER 3 AXES**



**C25-K**  
**CORNER 4 AXES**



**C25-XI**  
**CORNER 5 AXES**



**C25-H**  
**HANDLING CORNER**



**C25-SB**  
**SPACE BOOSTER**



**C25-RF**  
**RUBBER FEET**



## GROW ROOM SPECIFICATIONS



DARK STREET			WGT	ASSEMBLED			POLES	WEB PLANT SUPPORT	WATER TRAY	DUCTING FLANGES INCLUDED				CABLE FLANGE	HANDLING				ACCESSORIES			
REF	DESIGNATION	REV	Net kg	W cm	D cm	H cm	Ø mm	Included	Included	Support Flange	Connector #			Light Baffle #	CF7 #	#	L cm	Weight Per Pole	Weight Per Tent	StrapIT Unit #	CableIT #	Grid6040 #
											Ø100	Ø125	Ø150									
DS60	Dark Street 60 x 60 x 158 cm	R4.00	6,7	60	60	158	16	1xWEBTH60	1xWT60	2x DF16	2	—	—	1	1	2	60	10 kg	20 kg	1	15	—
DS90	Dark Street 90 x 90 x 178 cm	R4.00	9,0	90	90	178	16	1xWEBTH90	1xWT90	2x DF16	—	2	—	1	1	2	90	10 kg	20 kg	1	15	—
DS120	Dark Street 120 x 120 x 200 cm	R4.00	14,6	120	120	200	19	1xWEBTH120	1xWT120	2x DF16	—	—	2	1	1	2	120	15 kg	30 kg	1	15	—
DS120W	Dark Street 120 x 60 x 178 cm	R4.00	9,8	120	60	178	16	1xWEBTH120W	1xWT120W	2x DF16	—	2	—	1	1	2	120	10 kg	20 kg	1	15	—
DS150W	Dark Street 150 x 77 x 200 cm	R4.00	14,1	150	77	200	19	1xWEBTH150W	1xWT150W	2x DF16	—	—	2	1	1	2	150	15 kg	30 kg	1	15	—

DARK ROOM			WGT	ASSEMBLED			POLES	WEB PLANT SUPPORT	WATER TRAY	DUCTING FLANGES INCLUDED				CABLE FLANGE	HANDLING				ACCESSORIES			
REF	DESIGNATION	REV	Net kg	W cm	D cm	H cm	Ø mm	Included	Included	Support Flange	Connector #			Light Baffle #	CF7 #	#	L cm	Weight Per Pole	Weight Per Tent	StrapIT Unit #	CableIT #	Grid6040 #
											Ø150	Ø200	Ø250									
DR150	Dark Room 150 x 150 x 217 cm	R4.00	26,8	150	150	217	25	1xWEBIT150	1xWTL150	2x DF25	—	2	—	Option	2	3	150	25 kg	75 kg	1	20	—
DR240	Dark Room 237 x 237 x 200 cm	R4.00	46,2	237	237	200	25	2xWEBIT240W	2xWTL240W	2x DF25	—	—	2	Option	4	9	120	25 kg	225 kg	1	40	—
DR300	Dark Room 297 x 297 x 217 cm	R4.00	66,6	297	297	217	25	2xWEBIT300W	2xWTL300W	4x DF25	—	—	4	Option	4	10	150	25 kg	250 kg	2	40	—
DR240W	Dark Room 237 x 120 x 200 cm	R4.00	31,7	237	120	200	25	2xWEBIT120	1xWTL240W	2x DF25	—	2	—	Option	3	5	120	25 kg	125 kg	1	40	—
DR300W	Dark Room 297 x 150 x 217 cm	R4.00	42,9	297	150	217	25	2xWEBIT150	1xWTL300W	2x DF25	—	—	2	Option	3	5	150	25 kg	125 kg	1	40	—

INTENSE			WGT	ASSEMBLED			POLES	WEB PLANT SUPPORT	WATER TRAY	DUCTING FLANGES INCLUDED				CABLE FLANGE	HANDLING				ACCESSORIES		
REF	DESIGNATION	REV	Net kg	W cm	D cm	H cm	Ø mm	Option	Option	Mobile Ducting Flange Ø315 mm	Ducting Flange	Connector Ø250	Light Baffle #	CF7 #	#	L cm	Weight Per Pole	Weight Per Tent	StrapIT Unit #	CableIT #	Grid6040 #
INT480	Intense 470 x 300 x 233 cm	R4.00	88	300	470	233	25	4xWEBIT240W	4xWTL240W	2x DFM315	4x DF25	4	Option	5	10	120	25 kg	250 kg	2	60	—
INT600	Intense 590 x 360 x 233 cm	R4.00	112	360	590	233	25	4xWEBIT300W	4xWTL300W	2x DFM315	4x DF25	4	Option	5	10	150	25 kg	250 kg	2	60	—

DARK PROPAGATOR			WGT	ASSEMBLED			POLES		WATER TRAY	DUCTING FLANGES INCLUDED				CABLE FLANGE	HANDLING				ACCESSORIES			
REF	DESIGNATION	REV	Net kg	W cm	D cm	H cm	Ø mm		Included	Support Flange	Connector #			Light Baffle #	CF7 #	#	L cm	Weight Per Pole	Weight Per Tent	StrapIT Unit #	CableIT #	Grid6040 #
											Ø100	Ø125	Ø150									
DP60	Dark Propagator 60 x 40 x 60 cm	R4.00	3,3	60	40	60	16		1xWT6040	2x DF16	1	—	—	1	1	1	60	10 kg	10 kg	—	15	—
DP90	Dark Propagator 90 x 60 x 98 cm	R4.00	5,8	90	60	98	16		1xWT9060	2x DF16	1	—	—	1	1	2	60	10 kg	20 kg	—	15	Option
DP120	Dark Propagator 120 x 60 x 192 cm	R4.00	19,8	120	60	192	16		1xWT120W	2x DF16	1	—	—	1	2	1	120	10 kg	50 kg	—	30	12


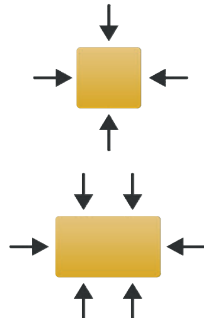
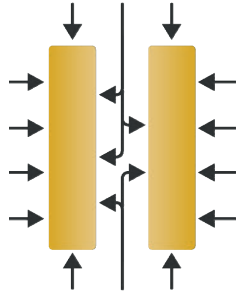


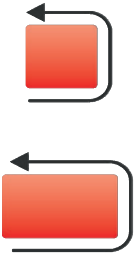
## HYDRO SHOOT SPECIFICATIONS & ADVISED CONFIGURATION

HYDRO SHOOT			WGT	ASSEMBLED			POLES	WEB PLANT SUPPORT	WATER TRAY	SOCKS CONFIGURATION				WINDOWS	HANDLING				LIGHTING ADVISED		VENTILATION ADVISED			FAN	HEAT MAT
REF	DESIGNATION	REV	Net kg	W cm	D cm	H cm	Ø mm	Option	Included	Ventilation		Cables		30 x 20 cm #	#	L cm	Weight Per Pole	Weight Per Tent	HPS PPE 2.5 PPFD 1000	LED PPE 2.85 PPFD 800	1 MIN CYCLE (FILTER ON)			ADVISED REF	ADVISED POWER
										Ø (mm)	#	Ø (mm)	#								EXTRACTOR	FILTER	INTAKE		
HS40	Hydro Shoot 40 x 40 x 118 cm	R2.00	3,4	40	40	118	16	—	1xWT40	150	1	75	1	1	2	40	10 kg	20 kg	—	—	80 m³/h	80 m³/h	—	MF120	—
HS60	Hydro Shoot 60 x 60 x 158 cm	R2.00	4,8	60	60	158	16	1xWEBTH60	1xWT60	150	2	75	1	1	2	60	10 kg	20 kg	150 W	100 W	150 m³/h	150 m³/h	—	MF120	30 W
HS80	Hydro Shoot 80 x 80 x 178 cm	R2.00	6,1	80	80	178	16	—	1xWT80	180	2	75	1	1	2	80	10 kg	20 kg	250 W	150 W	200 m³/h	200 m³/h	—	MF2X120	55 W
HS100	Hydro Shoot 100 x 100 x 198 cm	R2.00	8,0	100	100	198	16	—	1xWT100	180	2	75	1	1	2	100	10 kg	20 kg	400 W	250 W	270 m³/h	270 m³/h	—	MF2X120	85 W
HS120	Hydro Shoot 120 x 120 x 200 cm	R2.00	9,5	120	120	200	19	1xWEBTH120	1xWT120	230	2	75	1	1	2	120	15 kg	30 kg	600 W	400 W	350 m³/h	350 m³/h	150 m³/h	MF020	120 W
HS150	Hydro Shoot 150 x 150 x 200 cm	R2.00	13,0	150	150	200	19	1xWEBIT150	1xWT150	280	4	CF7D	1	—	2	150	15 kg	30 kg	1000 W	600 W	650 m³/h	650 m³/h	350 m³/h	2x MF020	200 W
HS240W	Hydro Shoot 238 x 120 x 200 cm	R2.00	17,4	238	120	200	19	2xWEBIT120	1xWT240W	280	4	CF7D	2	—	3	120	15 kg	45 kg	1200 W	800 W	650 m³/h	650 m³/h	350 m³/h	2x MF30	250 W
HS300W	Hydro Shoot 298 x 150 x 200 cm	R2.00	21,2	298	150	200	19	2xWEBIT150	1xWT300W	380	4	CF7D	2	—	3	150	15 kg	45 kg	2000 W	1200 W	900 m³/h	900 m³/h	450 m³/h	2x MF30	350 W



## GROW ROOM COMPARATIVE



	DARK STREET	DARK ROOM	INTENSE	DARK PROPAGATOR	HYDRO SHOOT (S)	HYDRO SHOOT (L)
<b>ENCLOSURE</b>						
Canvas	Mylar 210D	Mylar 400D	Mylar 900D	Mylar 210D	Mylar 210D	Mylar 210D
Bottom	Fabric 600D	Fabric 600D	Liner 450 gr/m²	Fabric 600D	Fabric 210D	Fabric 210D
Removable Water Tray	Mylar 210D	Liner 350 gr/m²	Option	Mylar 210D	Mylar 210D	Mylar 210D
<b>VENTILATION ACCESS</b>						
Technology	Ducting Flange	Ducting Flange	Ducting Flange	Ducting Flange	Socks	Socks
Connectors available	Ø100-125-150 mm	Ø150-160-200-250 mm	Ø150-160-200-250-315 mm	Ø100-125-150 mm	-	-
<b>STRUCTURE</b>						
Poles	Ø16/19 mm	Ø25 mm Stainless Steel #201	Ø25 mm Stainless Steel #201	Ø16 mm	Ø16/19 mm	Ø16/19 mm
Max Weight	10/15 kg per pole	25 kg per pole	25 kg per pole	10 kg per pole	10 kg per pole	15 kg per pole
<b>SPACE BOOSTER</b>	Included	Included	Option	Option	Option	Option
<b>WEB PLANT SUPPORT</b>	Included	Included	Option	Option	Option	Option
<b>LINKABLE</b>	-	-	All Sides - 4x Zips	-	-	-
<b>GROW AREA DIMENSIONS</b>						
W x D	60x60 - 120x120	150x150 - 300x300 cm	480x300 - 600x360 cm	60x40 - 5x 120x60 cm	40x40 to 100x100 cm	120x120 to 600x300 cm
Grow Area	0.36 - 1.44 m²	2.25 - 9.00 m²	11.50 - 21.60 m²	0.24 - 3.60 m²	0.16 - 1.00 m²	1.44 - 18.00 m²
Height	158 - 200 cm	200 - 217 cm	235 cm	60 - 190 cm	120 to 198 cm	200 cm
<b>ACCESSIBILITY</b>						

LIGHTING SPECIFICATIONS



LIGHTING KITS

COMOSRROW KIT FULL SPECTRUM		WGT	DIM. ASSEMBLED			POWER SUPPLY	CABLE LENGTH		CONSUMPTION & PERFORMANCE (PAR)							LIFE TIME	
REF	DESIGNATION	Net kg	L cm	W cm	H cm	Included W	24 V cm	100-220 V cm	Cons. W	COP # Included	PPE μmol/s/w	PPF μmol/s	AVERAGE PPFD			LED L90B10	POWER SUP. MTBF
													Grow Area	Distance	μmol/s/m²		
COM60FS	Cosmorrow Kit 60W Full Spectrum	1,00	50	27	6,0	60	180	60	60	3x COP20FS	2,85	163	60 x 40 cm	15 cm	770	50 000 h	100 000 h
COM100FS	Cosmorrow Kit 100W Full Spectrum	1,60	50	40	6,5	100	180	60	100	5x COP20FS	2,85	271	60 x 60 cm	15 cm	855	50 000 h	100 000 h
COM200FS	Cosmorrow Kit 200W Full Spectrum	2,90	73	64	11,5	200	240	60	200	5x COP40FS	2,85	542	90 x 90 cm	20 cm	805	50 000 h	100 000 h

COMOSRROW TNOLED GROW		WGT	DIM. ASSEMBLED			POWER SUPPLY	CABLE LENGTH		CONSUMPTION & PERFORMANCE (PAR)						CONSUMPTION & PERFORMANCE (PAR) WITH 1X COP UPGRADE						LIFE TIME			
REF	DESIGNATION	Net kg	L cm	W cm	H cm	Included W	24 V cm	100-220V cm	Cons. W	COP # Included	PPE μmol/s/w	PPF μmol/s	AVERAGE PPFD			Cons. W	COP # Inc. + Option	PPE μmol/s/w	PPF μmol/s	AVERAGE PPFD			LED L90B10	POWER SUP. MTBF
													Grow Area	Distance	μmol/s/m²					Grow Area	Distance	μmol/s/m²		
TNO40GR	TNoled 2x20W Growing	0.80	50	12	4.0	60	180	60	40	2x COP2065	2.70	103	60 x 40 cm	15 cm	540	60	3x COP2065	2.70	155	60 x 40 cm	15 cm	810	50 000 h	100 000 h
TNO80GR	TNoled 2x40W Growing	1.60	90	27	6.0	120	240	60	80	2x COP4065	2.70	205	120 x 60 cm	15 cm	395	120	3x COP4065	2.70	308	120 x 60 cm	15 cm	600	50 000 h	100 000 h

POWER SUPPLY: Voltage: 100-220V, Frequency: 50-60Hz, Plug: C/G/A Type, Country: UE/UK/US

ENVIRONMENT: Class: IP65, Working Temperature: 0 to 40°C, Storage Temperature: -20 to 60°C

BULBS

COSMORROW LED INFRARED & ULTRAVIOLET		WEIGHT	DIMENSIONS			ELECTRICAL		LED RATIO				PERFORMANCE PAR [400-700]				LIFE TIME
REF	DESIGNATION	Net kg	Length cm	Width cm	Height cm	Voltage Vdc	Current A	2100K	6500K	730 nm	365 nm	PPE μmol/s/w	PPF μmol/s	Distance Advised	Grow Area Advised	L90B10 hours
COL20IR	Cosmorrow Led 20w L50 cm IR	0,13	47	3,2	1,6	24	0,83	66%	-	33%	-	1,7	34	15 cm	0,2m²	30 000
COL40IR	Cosmorrow Led 40w L90 cm IR	0,30	87	3,2	1,6	24	1,67	66%	-	33%	-	1,7	68	15 cm	0,4m²	30 000
COL20UV	Cosmorrow Led 20w L50 cm UV	0,13	47	3,2	1,6	24	0,83	-	66%	-	33%	1,6	32	15 cm	0,4m²	20 000
COL40UV	Cosmorrow Led 40w L90 cm UV	0,30	87	3,2	1,6	24	1,67	-	66%	-	33%	1,6	64	15 cm	0,8m²	20 000

COMOSRROW LED GROW & FULL SPECTRUM		WEIGHT	DIMENSIONS			ELECTRICAL		PERFORMANCE (PAR)					LIFE TIME
REF	DESIGNATION	Net kg	Length cm	Width cm	Height cm	Voltage Vdc	Current A	PPE μmol/s/w	PPF μmol/s	AVERAGE PPFD			L90B10 hours
										Grow Area	Distance	μmol/s/m²	
COP2065	Cosmorrow Led 20w L50cm Growing	0,13	47	3,2	1,6	24	0,78	2,70	51	60x40 cm	15 cm	290	50 000
COP4065	Cosmorrow Led 40w L90cm Growing	0,30	87	3,2	1,6	24	1,56	2,70	103	120x60 cm	15 cm	205	50 000
COP20FS	Cosmorrow Led 20w L50cm Full Spectrum	0,13	47	3,2	1,6	24	0,78	2,85	54	60x40 cm	15 cm	295	50 000
COP40FS	Cosmorrow Led 40w L70cm Full Spectrum	0,30	70	4,5	1,6	24	1,56	2,85	108	90x60 cm	20 cm	245	50 000

ENVIRONMENT: Class: IP65, Working Temperature: 0 to 40°C, Storage Temperature: -20 to 60°C

POWER SUPPLIES

COSMORROW POWER SUPPLY		WEIGHT	PLASTIC PARTS	ELECTRICAL				CABLES		AC PLUG		ENVIRONMENT		LIFE TIME
REF	DESIGNATION	Net kg	Included	Input Voltage	Input Frequency	Maximum Consumption	Output Voltage	24V cm	100-220V cm	Type	Country	Working Temperature	Storage Temperature	MTBF hours
COM20	Cosmorrow Power 1x 20w UE/UK/US	0,26	Pole clips Ø16-25 mm	100-220V	50/60 Hz	20 W	24 V	180	60	C/G/A Type	UE/UK/US	0 to 40°C	-20° to 60°C	30 000
COM40	Cosmorrow Power 1x 40w UE/UK/US	0,33	Pole clips Ø16-25 mm	100-220V	50/60 Hz	40 W	24 V	240	60	C/G/A Type	UE/UK/US	0 to 40°C	-20° to 60°C	30 000
COM2X20 (40D)	Cosmorrow Power 2x 20w UE/UK/US	0,43	Dual clips L10 cm	100-220V	50/60 Hz	40 W	24 V	180	60	C/G/A Type	UE/UK/US	0 to 40°C	-20° to 60°C	30 000
COM2X40 (80D)	Cosmorrow Power 2x 40w UE/UK/US	0,48	Dual clips L10 cm	100-220V	50/60 Hz	80 W	24 V	240	60	C/G/A Type	UE/UK/US	0 to 40°C	-20° to 60°C	30 000
COM3X20	Cosmorrow Power 2/3x 20w UE/UK/US	0,52	Three-prong clips L10 cm	100-220V	50/60 Hz	60 W	24 V	180	60	C/G/A Type	UE/UK/US	0 to 40°C	-20° to 60°C	30 000
COM5X20	Cosmorrow Power 4/5x 20w UE/UK/US	0,80	Five-prong clips L39 cm	100-220V	50/60 Hz	100 W	24 V	180	60	C/G/A Type	UE/UK/US	0 to 40°C	-20° to 60°C	30 000

VENTILATION SPECIFICATIONS



EXTRACTORS

DF16 EXTRACTOR		WGT	DIMENSIONS				MODULE POWER			POWER SUPPLY CABLE & PLUGS						TEMPERATURE		NOISE*				
REF	DESIGNATION	Net kg	L cm	W cm	H cm	Cons. W	Voltage V	Current A	Cable (24V) L (cm)	Cable (220V) L (cm)	Voltage V	Freq. Hz	Adaptors Included		Working Min-Max	Storing Min-Max	Ext Max 50 m³/h	Ext Max 100 m³/h	Ext Max 150 m³/h	Ext Max 250 m³/h	Ext Max 350 m³/h	
													Type	Countries								
DF16E150	DF16 Extractor T° 50/100/150 m³/h UE/UK/US	0,8	22	18	10	15	24	0,6	240	60	110-220	50/60	C/G/A Type	UE/UK/US	0 to 40°C	-20 to 60°C	20 dB	40 dB	55 dB	-	-	
DF16E350	DF16 Extractor T° 150/250/350 m³/h UE/UK/US	1,5	25	25	21	35	24	1,5	240	60	110-220	50/60	C/G/A Type	UE/UK/US	0 to 40°C	-20 to 60°C	-	-	36 dB	54 dB	61 dB	

\* Extractor & Filter inside the tent. Measurement done 70 cm in front of the tent

FILTERS

DF16 FILTERS		WGT	DIMENSIONS		CARBON			SETUP				AIR FLOW MEASURED*					
REF	DESIGNATION	Net kg	Ø cm	L cm	Type	Diam. mm	Wgt. kg	Tent Ref.	Vol m³	Extraction Ref.	Max Ext m³/h	Extractor		Ext + Filter		Ext + Filt + Light Baffle	
												m³/h	Cycle/min	m³/h	Cycle/min	m³/h	Cycle/min
DF16F100	DF16 Carbon Filter CTC80 0.4 kg 100 m³/h	0,7	15,0	8,5	CTC-80	3	0,4	DP90	0,5	DF16E150	100	110	3,4	55	1,7	40	1,2
DF16F150	DF16 Carbon Filter CTC80 1.0 kg 150 m³/h	1,5	22,5	13	CTC-80	3	1,0	DS60	0,6	DF16E150	150	155	4,5	85	2,4	65	1,9
DF16F250	DF16 Carbon Filter CTC80 1.5 kg 250 m³/h	2,1	22,5	19	CTC-80	3	1,5	DS90	1,5	DF16E350	250	265	3,0	170	1,9	115	1,3
DF16F350	DF16 Carbon Filter CTC80 2.0 kg 350 m³/h	2,7	22,5	24	CTC-80	3	2,0	DS120	2,9	DF16E350	350	360	2,1	275	1,6	160	0,9

\* Cycle / min: Complete tent volume exchanged every minute

FANS

MONKEY FAN 220V			WGT	DIMENSIONS				DIAMETER		SPEED		WIND SPEED		MAIN POWER					TEMPERATURE	
REF	DESIGNATION	REV	Net kg	W cm	H cm	D cm	Fan cm	Screw cm	#	Max RPM	Dist cm	Speed m/s	Voltage V	Freq. Hz	Power W	Cable L (cm)	Plug Type	Working Min-Max	Storing Min-Max	
MFO20BBUE	Monkey Fan 20W Oscillating UE	R2.00	1,0	21,0	20,0	21,0	21,0	16,8	2	2300	70 cm	2,0	220V	50	20w	240	C Type (UE)	15 to 35°C	0 to 50°C	
MFO20BBUK	Monkey Fan 20W Oscillating UK	R2.00	1,0	21,0	20,0	21,0	21,0	16,8	2	2300	70 cm	2,0	220V	50	20w	240	G Type (UK)	15 to 35°C	0 to 50°C	
MF30BBUE	Monkey Fan 30W UE	R2.00	1,1	28,0	15,0	25,5	23,0	17,8	2	2300	70 cm	3,7	220V	50	30w	240	C Type (UE)	15 to 35°C	0 to 50°C	
MF30BBUK	Monkey Fan 30W UK	R2.00	1,1	28,0	15,0	25,5	23,0	17,8	2	2300	70 cm	3,7	220V	50	30w	240	G Type (UK)	15 to 35°C	0 to 50°C	

EXPECTED LIFE TIME IN STABLE & CLEAN ENVIRONMENT: 24/24h: 6 months, 12/24h: 12 months, 6/24h: 24 months

MONKEY FAN 24V		WGT	DIMENSIONS	TUBE CLIP	AIRFLOW	POWER SUPPLY CABLE & PLUGS						MOTOR				NOISE*	LIFE TIME	TEMPERATURE	
REF	DESIGNATION	Net kg	One fan mm	Diameter mm	Max m³/h	Voltage V	Freq. Hz	Power W	Cable 24V L (cm)	Adaptors Included		Type	Voltage V	Current A	Speed RPM	Max dB A	Hours	Working Min-Max	Storing Min-Max
										Type	Countries								
MF120	Monkey Fan 120 mm	0,3	120 x 125 x 142	16 – 19	100	100 – 240V	50 - 60	1,3	180	C/G/A Type	UE/UK/US	Brushless DC	24	35	1700	<30	30 000	15 to 35°C	0 to 50°C
MF2X120	Monkey Fan 2x120 mm	0,6	120 x 125 x 142	16 - 19	2 x 100	100 - 240V	50 - 60	2,5	60 + 270 splitter 2x	C/G/A Type	UE/UK/US	Brushless DC	24	2 x 35	2 x 1700	32	30 000	15 to 35°C	0 to 50°C

\* Measured in SJ standard : 70cm from the front of the tent (closed), at 100cm height

RUBBER DUCTS

RUBBER DUCT			WGT	DIMENSIONS			COMPATIBLE DIAMETER	
REF	DESIGNATION	REV	Net kg	Ø in mm	Ø out mm	W mm	Ø min mm	Ø max mm
RD100	Rubber Duct Ø100 mm	R1.00	400	110	127	100	105	130
RD125	Rubber Duct Ø125 mm	R1.00	530	140	154	96	135	160
RD150	Rubber Duct Ø150-160 mm	R1.00	710	163	175	145	155	180
RD200	Rubber Duct Ø200 mm	R1.00	950	205	220	150	200	225
RD250	Rubber Duct Ø250 mm	R1.00	1750	255	275	150	255	280



