

T16-40	14"
T16-60	22"
T16-80	30"
T16-90	34"
T16-100	38"
T16-120	46"

POLES
Ø0.63"

T16-LINK
LINK

C16-Y
CORNER 3 AXES



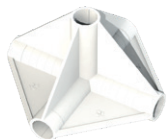
C16-T
CORNER 3 AXES



C16-K
CORNER 4 AXES



C16-XI
CORNER 5 AXES



C16-H
HANDLING CORNER



C16-SB
SPACE BOOSTER



C16-RF
RUBBER FEET



T19-75	28.6"
T19-100	38.4"
T19-120	45.4"
T19-LINK	LINK

POLES
Ø0.75"

C19-Y
CORNER 3 AXES



C19-K
CORNER 4 AXES



C19-XI
CORNER 5 AXES



C19-H
HANDLING CORNER



C19-SB
SPACE BOOSTER



C19-RF
RUBBER FEET



T25-60	24"
T25-75	28"
T25-100	38"
T25-120	45"
T25-LINK	LINK

POLES
Ø1.00"

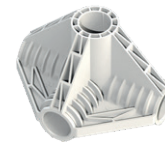
C25-Y
CORNER 3 AXES



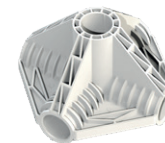
C25-T
CORNER 3 AXES



C25-K
CORNER 4 AXES



C25-XI
CORNER 5 AXES



C25-H
HANDLING CORNER



C25-SB
SPACE BOOSTER



C25-RF
RUBBER FEET





DARK STREET

REF	DESIGNATION	STRUCTURE					HANDLING POLES INCLUDED					SPACE BOOSTER INCLUDED				
		DS60	DS90	DS120	DS120W	DS150W	DS60	DS90	DS120	DS120W	DS150W	DS60	DS90	DS120	DS120W	DS150W
T16-60	Pole Ø0.63" 22"	12			4		2					4			2	
T16-90	Pole Ø0.63" 34"		16		8			2				4				
T16-100	Pole Ø0.63" 38"	4														
T16-120	Pole Ø0.63" 46"				4					2					2	
T16-Link	Link Ø0.63"	4	4		4											
C16-Y	Corner Ø0.63" 3 axes Y shape	8	8		8											
C16-H	Handling Corner Ø0.63"						2	4		2						
C16-SB	Space Booster Ø0.63"										4	4			4	
T19-75	Pole Ø0.75" 28.6"					12					4					6
T19-100	Pole Ø0.75" 38.4"			8		8										
T19-120	Pole Ø0.75" 45.4"			8					2					4		
T19-Link	Link Ø0.75"			4		8					2					2
C19-Y	Corner Ø0.75" 3 axes Y shape			8		8										
C19-H	Handling Corner Ø0.75"								4		4					
C19-SB	Space Booster Ø0.75"												4			4

DARK ROOM

REF	DESIGNATION	STRUCTURE					HANDLING POLES INCLUDED					SPACE BOOSTER INCLUDED				
		DR150	DR240	DR300	DR240W	DR300W	DR150	DR240	DR300	DR240W	DR300W	DR150	DR240	DR300	DR240W	DR300W
T25-75	Pole Ø1.00" 28"	16		40		26	6		20		10	8		24		16
T25-100	Pole Ø1.00" 38"	4	18	9	12	6										
T25-120	Pole Ø1.00" 45"	4	20	9	13	6		9		5		12		8		
T25-Link	Link Ø1.00"	12	9	29	6	19	3		10		5	4		12		8
C25-Y	Corner Ø1.00" 3 axes Y shape	8	8	8	8	8										
C25-K	Corner Ø1.00" 4 axes K shape		4	4	2	2										
C25-T	Corner Ø1.00" 3 axes T shape		4	4	2	2										
C25-XI	Corner Ø1.00" 5 axes XI shape		1	1												
C25-H	Handling Corner Ø1.00"						6	18	20	10	10					
C25-SB	Space Booster Ø1.00"											8	24	24	16	16
C25-RF	Rubber Feet Ø1.00"		1	1												

HYDRO SHOOT (SMALL)

REF	DESIGNATION	STRUCTURE				HANDLING POLES INCLUDED			
		HS40	HS60	HS80	HS100	HS40	HS60	HS80	HS100
T16-40	Pole Ø0.63" 14"	8				2			
T16-60	Pole Ø0.63" 22"	8	8				2		
T16-80	Pole Ø0.63" 30"		8	8				2	
T16-90	Pole Ø0.63" 34"			8					
T16-100	Pole Ø0.63" 38"				16				2
T16-Link	Link Ø0.63"	4	4	4	4				
C16-Y	Corner Ø0.63" 3 axes Y shape	8	8	8	8				
C16-H	Handling Corner Ø0.63"					4	4	4	4

HYDRO SHOOT (LARGE)

REF	DESIGNATION	STRUCTURE								HANDLING POLES INCLUDED							
		HS120	HS150	HS240	HS300	HS240W	HS300W	HS480W	HS600W	HS120	HS150	HS240	HS300	HS240W	HS300W	HS480W	HS600W
T19-75	Pole Ø0.75" 28.6"		16		40		26		72								
T19-100	Pole Ø0.75" 38.4"	8	8	18	18	12	12	30	30		4		10		6		20
T19-120	Pole Ø0.75" 45.4"	8		20		13		36		2		5	3			10	
T19-Link	Link Ø0.75"	4	12	9	29	6	19	15	51		2		5		3		10
C19-Y	Corner Ø0.75" 3 axes Y shape	8	8	8	8	8	8	8	8								
C19-K	Corner Ø0.75" 4 axes K shape			8	8	4	4	16	16								
C19-XI	Corner Ø0.75" 5 axes XI shape			1	1			4	4								
C19-H	Handling Corner Ø0.75"									4	4	10	10	6	6	20	20
C19-RF	Rubber Feet Ø0.75"			1	1			2	2								

DARK PROPAGATOR

REF	DESIGNATION	STRUCTURE			HANDLING POLES		
		DP60	DP90	DP120	DP60	DP90	DP120
T16-40	Pole Ø0.63" 14"	4	4	20			
T16-60	Pole Ø0.63" 22"	8	8	6	1	2	
T16-90	Pole Ø0.63" 34"		6				
T16-120	Pole Ø0.63" 46"			12			1
C16-Y	Corner Ø0.63" 3 axes Y shape	8	8	8			
C16-K	Corner Ø0.63" 4 axes K shape			4			
C16-T	Corner Ø0.63" 3 axes T shape		4	12			
C16-H	Handling Corner Ø0.63"				2	2	2
GRID6040	GRID 24" x 16"	-	Option	12			

LODGE

REF	DESIGNATION	STRUCTURE		HANDLING POLES INC.		SPACE BOOSTER INC.	
		L100	L160	L100	L160	L100	L160
T16-40	Pole Ø0.63" 14"	5	5				
T16-60	Pole Ø0.63" 22"	22		3		4	
T16-100	Pole Ø0.63" 38"	8	16				
T16-120	Pole Ø0.63" 46"		14		3		4
T16-Link	Link Ø0.63"	4					
C16-Y	Corner Ø0.63" 3 axes Y shape	16	16				
C16-K	Corner Ø0.63" 4 axes K shape	2	2				
C16-T	Corner Ø0.63" 3 axes T shape	2	2				
C16-H	Handling Corner Ø0.63"			6	6		
C16-SB	Space Booster Ø0.63"					4	4
GRID6040	GRID 24" x 16"	1	2				

INTENSE

REF	DESIGNATION	STRUCTURE		HANDLING POLES INC.		SPACE BOOSTER INC.	
		INT480	INT600	INT480	INT600	INT480	INT600
T25-60	Pole Ø1.00" 24"	8	8				
T25-75	Pole Ø1.00" 28"		80		20		48
T25-120	Pole Ø1.00" 45"	80	40	10		24	
T25-Link	Link Ø1.00"	20	60		10		24
C25-Y	Corner Ø1.00" 3 axes Y shape	8	8				
C25-K	Corner Ø1.00" 4 axes K shape	12	12				
C25-T	Corner Ø1.00" 3 axes T shape	10	10				
C25-XI	Corner Ø1.00" 5 axes XI shape	6	6				
C25-H	Handling Corner Ø1.00"			20	20		
C25-SB	Space Booster Ø1.00"					48	48
C25-RF	Rubber Feet Ø1.00"	6	6				