

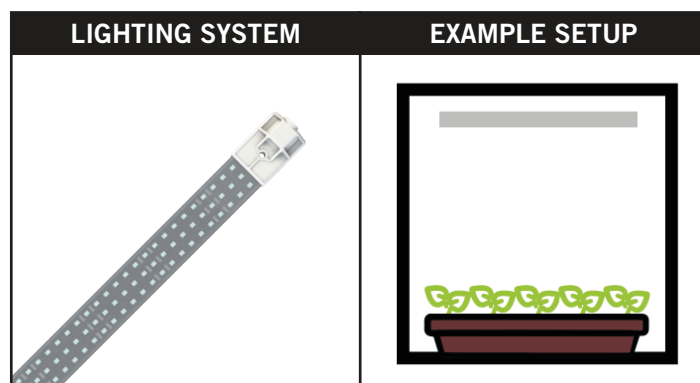
DP60CL 1-TRAY CLONING KIT



#	REFERENCE	DESIGNATION
1x	DP60	Dark Propagator 60x40x60 cm
1x	COP2065	Cosmorrow Led 20W GROWING
1x	COM20	Cosmorrow Power 1x20W

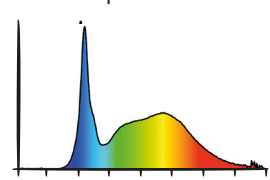
The most compact solution for cloning application.

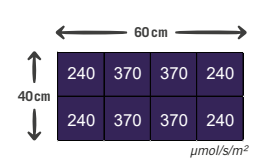
This bundle is made to fit one cloning tray. Easily maintain an high relative humidity thanks to the closed atmosphere.



GENERAL DETAILS

Power consumption	Light ON : 20W
Application	Hydroponic / horticulture / agronomy
Plant growth stage	Seedling / cutting
Spectrum	Grow spectrum - blue peak



PPFD
EARLY SPRING SUNLIGHT
1x COP2065

d=15cm - Av. PPFD: 305 μmol/s/m²



Energy saving
LED technology



24V
100% Safe



Closed environment
Easy high humidity



Easy assembly
No tools required

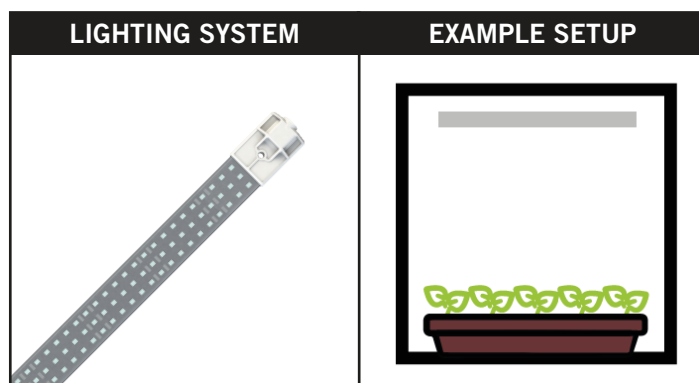
DP60CL 1-TRAY CLONING KIT



#	REFERENCE	DESIGNATION
1x	DP60	Dark Propagator 2' x 1½' x 24"
1x	COP2065	Cosmorrow Led 20W GROWING
1x	COM20	Cosmorrow Power 1x20W

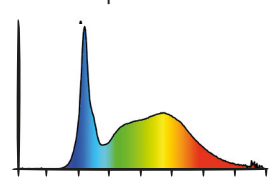
The most compact solution for cloning application.

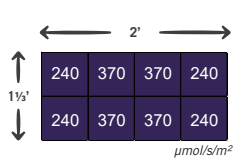
This bundle is made to fit one cloning tray. Easily maintain an high relative humidity thanks to the closed atmosphere.



GENERAL DETAILS

Power consumption	Light ON : 20W
Application	Hydroponic / horticulture / agronomy
Plant growth stage	Seedling / cutting
Spectrum	Grow spectrum - blue peak



PPFD
EARLY SPRING SUNLIGHT
1x COP2065

d=6inch - Av. PPFD: 305 μmol/s/m²



Energy saving
LED technology



24V
100% Safe



Closed environment
Easy high humidity



Easy assembly
No tools required