

DARK ROOM R4.00

GROW TENT BUILT FOR MEDIUM GROWING SPACE

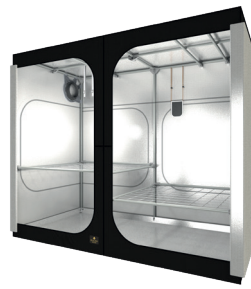
DR150

DR240


DR300

DR240W

DR300W



The Dark Room grow tent is designed for plants measuring 50 to 150cm (20 to 60in) tall, with grow spaces of 2.25 to 9.00m² (24 to 97ft²). It features DUCTING FLANGES (DF25) for managing intake/exhaust and comes with everything you need to install the complete system. The grow tent comes in a sturdy bag with a shoulder strap. The configuration advice provided in terms of ventilation, lighting and extraction is specific to intensive Level III growing, for sun-loving plants. Divide these figures by 2 or by 4 for Level II and Level I growing.

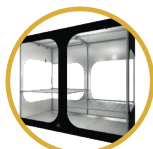
REFERENCE	DESIGNATION METRIC	DESIGNATION IMPERIAL	VIDEO
DR150	Dark Room 150x150x217 cm	Dark Room 5' x 5' x 85"	
DR240	Dark Room 237x237x200 cm	Dark Room 8' x 8' x 79"	
DR300	Dark Room 237x237x200 cm	Dark Room 10' x 10' x 85"	
DR240W	Dark Room 237x100x200 cm	Dark Room 8' x 4' x 79"	
DR300W	Dark Room 297x150x217 cm	Dark Room 10' x 5' x 85"	

GENERAL DETAILS

	METRIC	IMPERIAL
Canvas	M400D Mylar	M400D Mylar
Poles	Ø25 mm #201 Stainless Steel	Ø1.00" #201 Stainless Steel
Corners	7.0 mm PolyPropylene	0.30" PolyPropylene
Water Tray	Removable Fibered Liner 380 gr/m ²	Removable Fibered Liner 1.25 oz/ft ²
Bottom & Bag	PE600D	PE600D



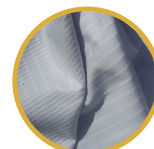
#201 Stainless Steel
Ø25mm | Ø1.00in



Accessibility 360°
Front Rear & Side



Fully Pre-equipped
Adapt to your needs



Fibered Liner
Strong & Removable



100% Lightproof
Double-flap zip

SPECIFICATION & ADVISED : METRIC

DARK ROOM		REF	DESIGNATION	REV	WGT Net kg	ASSEMBLED W D H cm	POLES Ø mm	WEB PLANT SUPPORT Included	WATER TRAY Included	DUCTING FLANGES INCLUDED Support Flange Ø150	Connector # Ø200	Battle # Ø250	CABLE Flange CF7 #	HANDLING # L cm	Weight Per Pole	Weight Per Tent	ACCESSORIES StrapT CableT Grid6040 #		
DR150	Dark Room 150 x 150 x 217 cm	R4.00	26.8	150	150	217	25	1 WEBIT150	1 WTL150	2 DF25	-	2	Option	3	150	25 Kg	75 kg	1	20
DR240	Dark Room 237 x 237 x 200 cm	R4.00	46.2	237	237	200	25	2 WEBIT240W	2 WTL240W	2 DF25	-	2	Option	9	120	25 kg	225 kg	1	40
DR300	Dark Room 297 x 297 x 217 cm	R4.00	66.6	297	297	217	25	2 WEBIT300W	2 WTL300W	4 DF25	-	4	Option	10	150	25 kg	250 kg	2	40
DR240W	Dark Room 237 x 120 x 200 cm	R4.00	31,7	237	120	200	25	2 WEBIT120	1 WTL240W	2 DF25	-	2	Option	5	120	25 Kg	125 kg	1	40
DR300W	Dark Room 297 x 150 x 217 cm	R4.00	42,9	297	150	217	25	2 WEBIT150	1 WTL300W	2 DF25	-	2	Option	5	150	25 kg	125 kg	1	40

SPECIFICATION & ADVISED : IMPERIAL

DARK ROOM		REF	DESIGNATION	REV	WGT Net lb	ASSEMBLED W D H in	POLES Ø in	WEB PLANT SUPPORT Included	WATER TRAY Included	DUCTING FLANGES INCLUDED Support Flange Ø6 1/2"	Connector # Ø8"	Battle # Ø10"	CABLE Flange CF7 #	HANDLING # L in	Weight Per Pole	Weight Per Tent	ACCESSORIES StrapT CableT Grid6040 #	
DR150	Dark Room 5' x 5' x 85"	R4.00	59	59	85	1.00	1 WEBIT150	1 WTL150	2 DF25	-	2	Option	3	59	50 lb	150 lb	1	20
DR240	Dark Room 8' x 8' x 79"	R4.00	102	93	79	1.00	2 WEBIT240W	2 WTL240W	2 DF25	-	2	Option	9	47	50 lb	450 lb	1	40
DR300	Dark Room 10' x 10' x 85"	R4.00	147	117	85	1.00	2 WEBIT300W	2 WTL300W	4 DF25	-	4	Option	10	59	50 lb	500 lb	2	40
DR240W	Dark Room 8' x 4' x 79"	R4.00	70	93	47	1.00	2 WEBIT120	1 WTL240W	2 DF25	-	2	Option	3	47	50 lb	250 lb	1	40
DR300W	Dark Room 10' x 5' x 85"	R4.00	95	117	59	1.00	2 WEBIT150	1 WTL300W	2 DF25	-	2	Option	5	59	50 lb	250 lb	1	40

DARK ROOM		REF	DESIGNATION	REV	WGT Net lb	ASSEMBLED W D H in	POLES Ø in	WEB PLANT SUPPORT Included	WATER TRAY Included	DUCTING FLANGES INCLUDED Support Flange Ø6 1/2"	Connector # Ø8"	Battle # Ø10"	CABLE Flange CF7 #	HANDLING # L in	Weight Per Pole	Weight Per Tent	ACCESSORIES StrapT CableT Grid6040 #	
DR150	Dark Room 5' x 5' x 85"	R4.00	59	59	85	1.00	1 WEBIT150	1 WTL150	2 DF25	-	2	Option	3	59	50 lb	150 lb	1	20
DR240	Dark Room 8' x 8' x 79"	R4.00	102	93	79	1.00	2 WEBIT240W	2 WTL240W	2 DF25	-	2	Option	9	47	50 lb	450 lb	1	40
DR300	Dark Room 10' x 10' x 85"	R4.00	147	117	85	1.00	2 WEBIT300W	2 WTL300W	4 DF25	-	4	Option	10	59	50 lb	500 lb	2	40
DR240W	Dark Room 8' x 4' x 79"	R4.00	70	93	47	1.00	2 WEBIT120	1 WTL240W	2 DF25	-	2	Option	3	47	50 lb	250 lb	1	40
DR300W	Dark Room 10' x 5' x 85"	R4.00	95	117	59	1.00	2 WEBIT150	1 WTL300W	2 DF25	-	2	Option	5	59	50 lb	250 lb	1	40

DARK ROOM		REF	DESIGNATION	REV	WGT Net lb	ASSEMBLED W D H in	POLES Ø in	WEB PLANT SUPPORT Included	WATER TRAY Included	DUCTING FLANGES INCLUDED Support Flange Ø6 1/2"	Connector # Ø8"	Battle # Ø10"	CABLE Flange CF7 #	HANDLING # L in	Weight Per Pole	Weight Per Tent	ACCESSORIES StrapT CableT Grid6040 #	
DR150	Dark Room 5' x 5' x 85"	R4.00	59	59	85	1.00	1 WEBIT150	1 WTL150	2 DF25	-	2	Option	3	59	50 lb	150 lb	1	20
DR240	Dark Room 8' x 8' x 79"	R4.00	102	93	79	1.00	2 WEBIT240W	2 WTL240W	2 DF25	-	2	Option	9	47	50 lb	450 lb	1	40
DR300	Dark Room 10' x 10' x 85"	R4.00	147	117	85	1.00	2 WEBIT300W	2 WTL300W	4 DF25	-	4	Option	10	59	50 lb	500 lb	2	40
DR240W	Dark Room 8' x 4' x 79"	R4.00	70	93	47	1.00	2 WEBIT120	1 WTL240W	2 DF25	-	2	Option	3	47	50 lb	250 lb	1	40
DR300W	Dark Room 10' x 5' x 85"	R4.00	95	117	59	1.00	2 WEBIT150	1 WTL300W	2 DF25	-	2	Option	5	59	50 lb	250 lb	1	40

LIGHT LEVEL VS GROW STAGE

