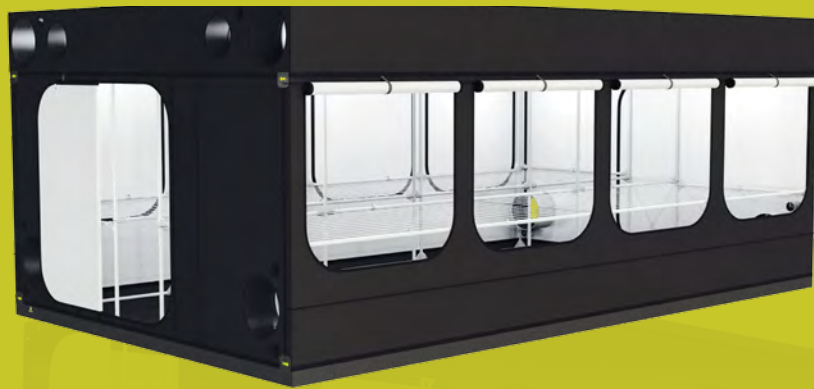




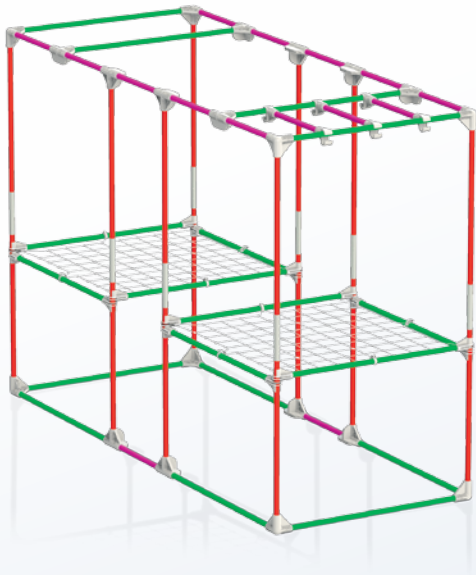
SECRET JARDIN



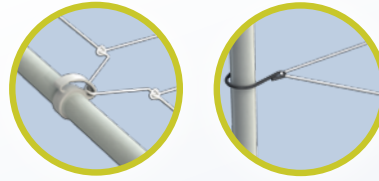
ASSEMBLY INSTRUCTIONS

EXPERT

| | |
|------------------------------|------|
| ■ INT120 | p 2 |
| ■ INT240 | p 5 |
| ■ INT480 | p 8 |
| ■ INT150 | p 14 |
| ■ INT300 | p 17 |
| ■ INT600 | p 20 |
| ■ TENTS SPECIFICATIONS | p 26 |



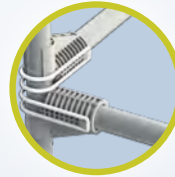
WebIT



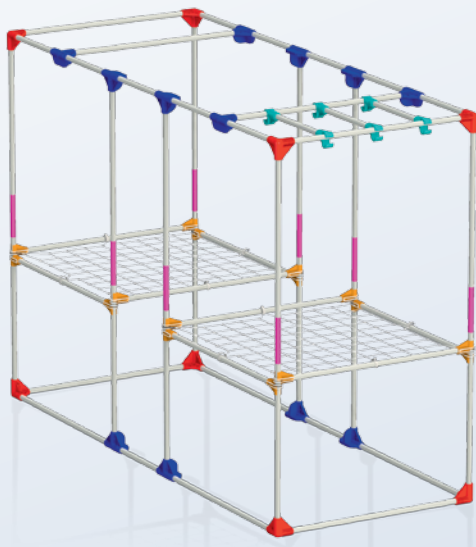
18 x T30-C

16 x T30-B

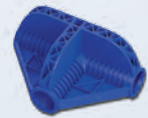
Space Booster



15 x T30-G



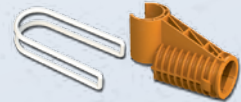
8 x C30-Y



12 x C30-T



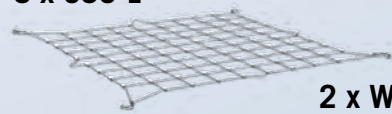
6 x C30-H



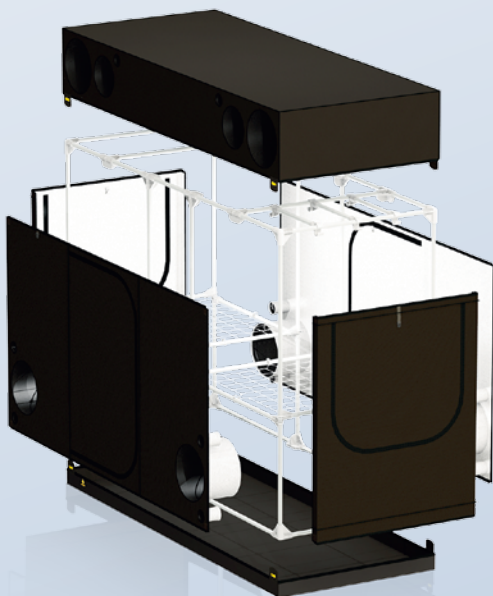
16 x C30-SB
16 x C30-SBR



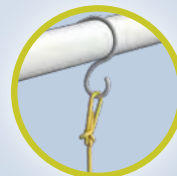
8 x C30-L



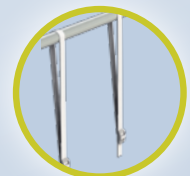
2 x Webi120



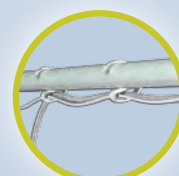
HookIT

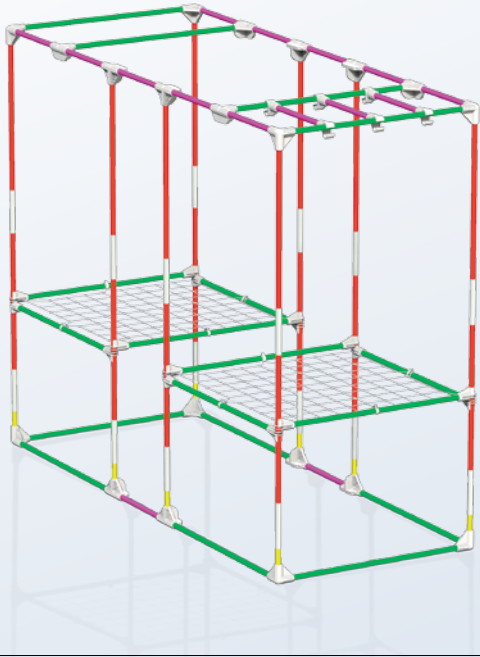


StrapIT

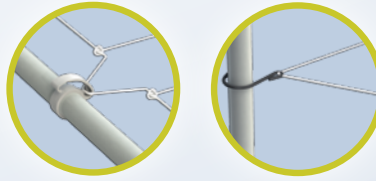


CableIT





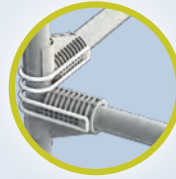
WebIT



18 x T30-C

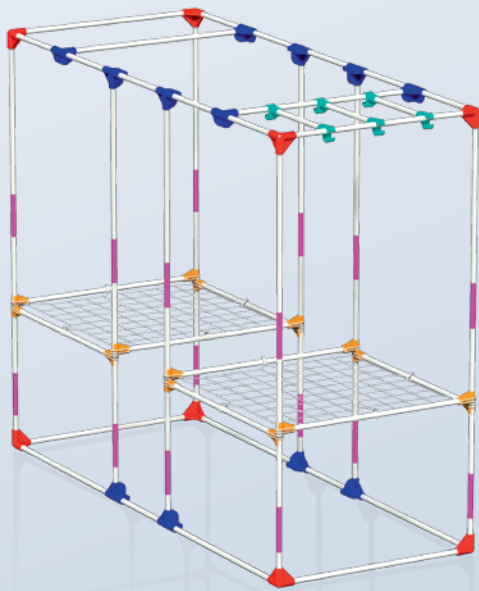
16 x T30-B

Space Booster

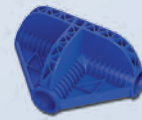


15 x T30-G

8 x T30-D



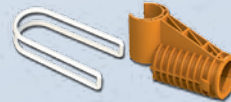
8 x C30-Y



12 x C30-T



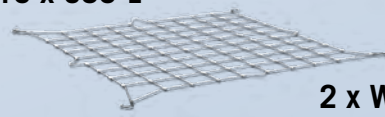
6 x C30-H



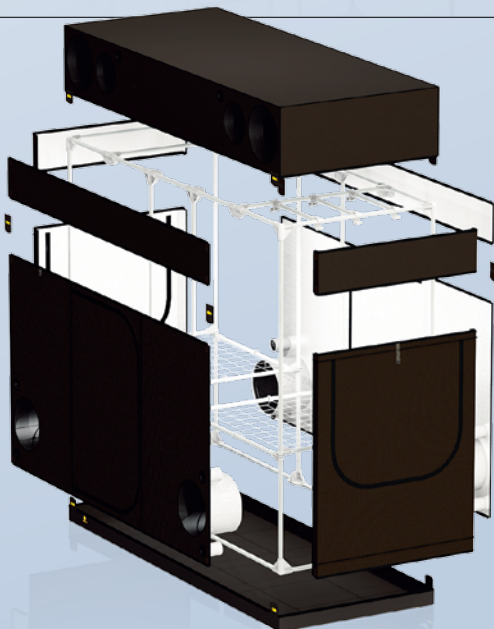
16 x C30-SB
16 x C30-SBR



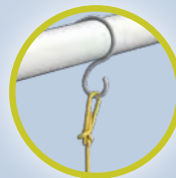
16 x C30-L



2 x WebiT120



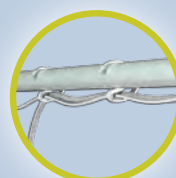
HookIT

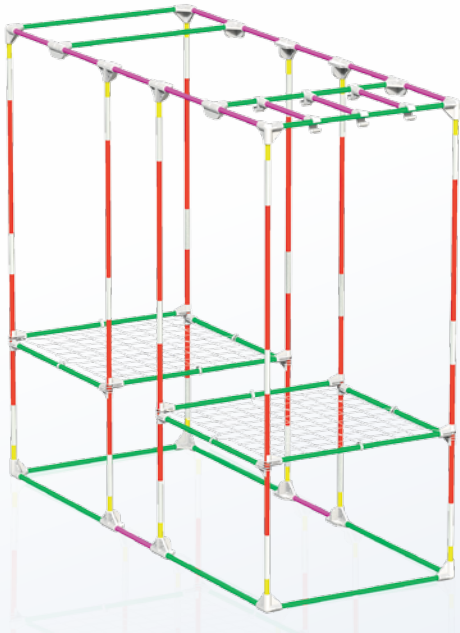


StrapIT

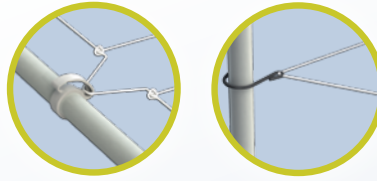


CableIT





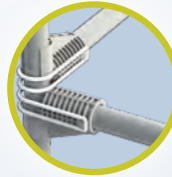
WebIT



18 x T30-C

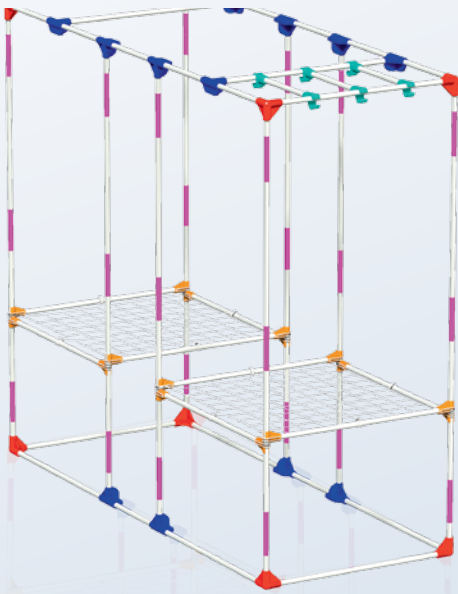
16 x T30-B

Space Booster

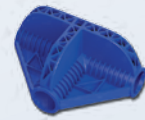


15 x T30-G

16 x T30-D



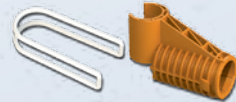
8 x C30-Y



12 x C30-T



6 x C30-H

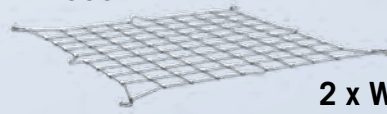


16 x C30-SB

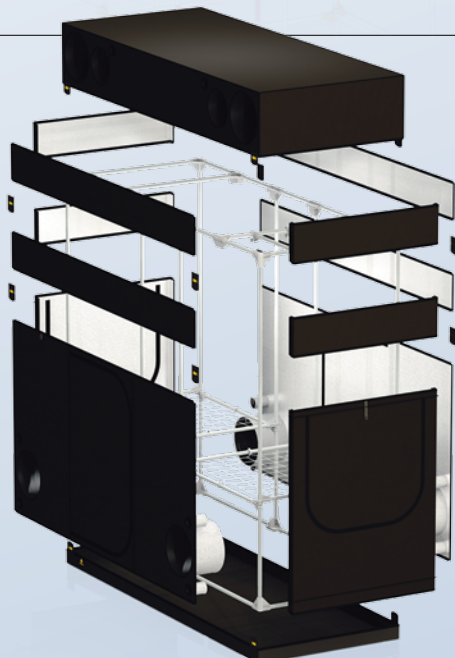
16 x C30-SBR



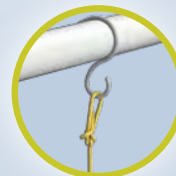
24 x C30-L



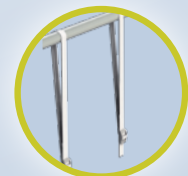
2 x WebiT120



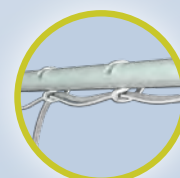
HookIT

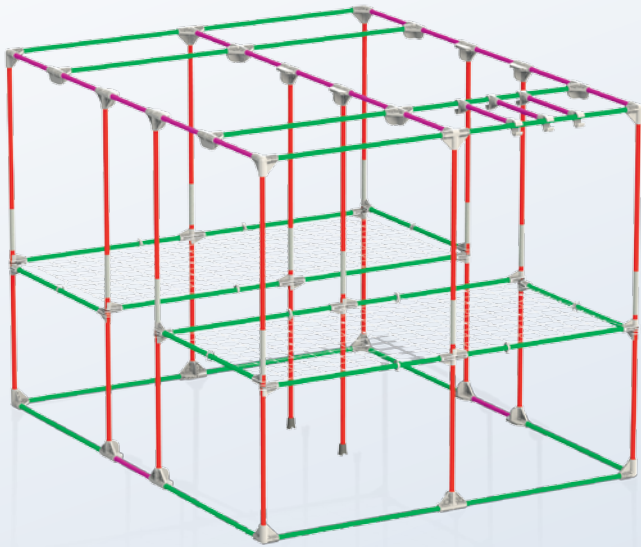


StrapIT

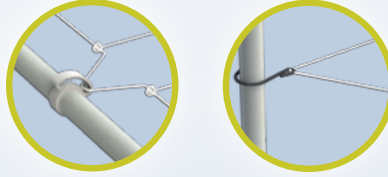


CableIT



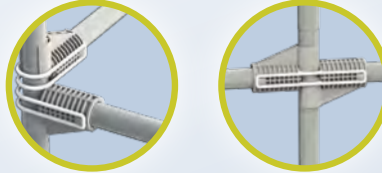


WebIT



28 x T30-C

Space Booster

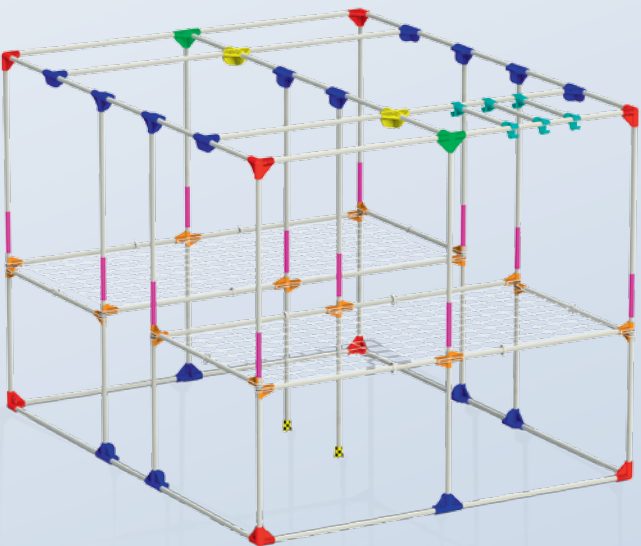


24 x T30-B

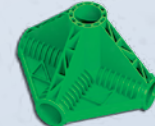
Caoutchouc Feet



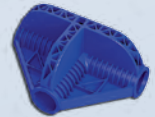
20 x T30-G



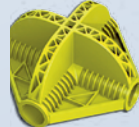
8 x C30-Y



2 x C30-K



16 x C30-T



2 x C30-X



6 x C30-H



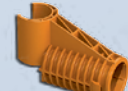
2 x C30-RF



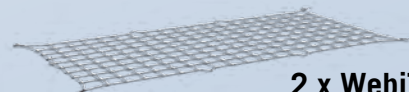
12 x C30-L



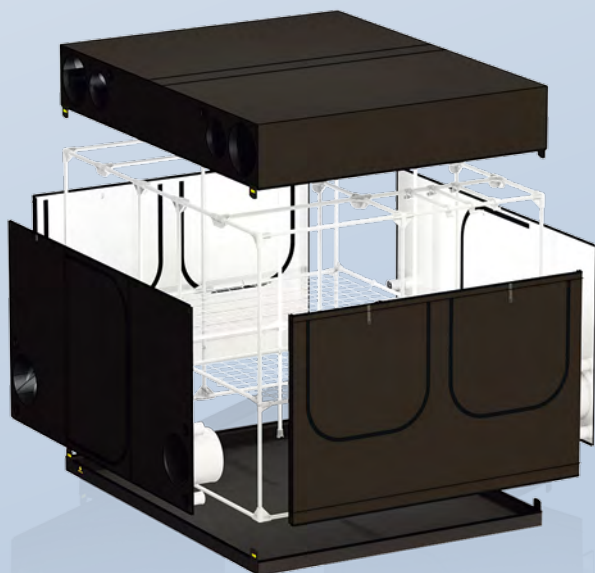
24 x C30-SB



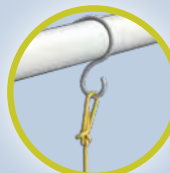
24 x C30-SBR



2 x WebiT240w



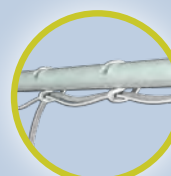
HookIT

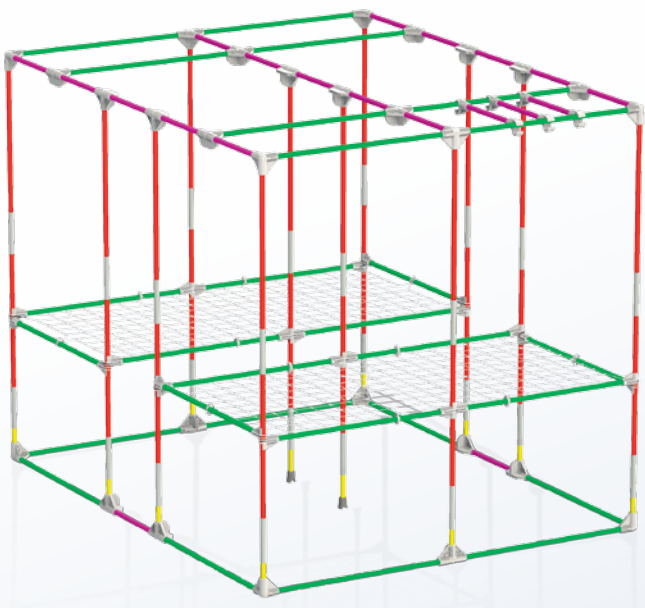


StrapIT

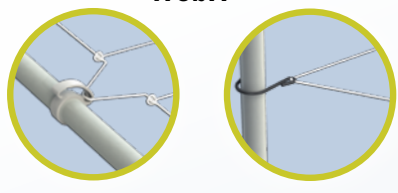


CableIT

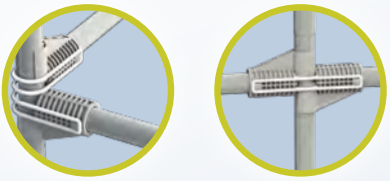




WebIT



Space Booster



Caoutchouc Feet

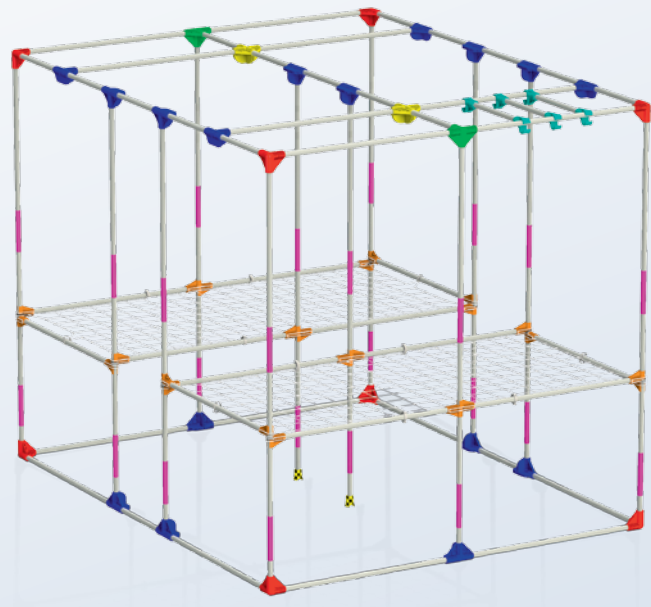


28 x T30-C

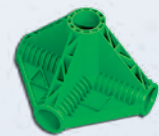
24 x T30-B

20 x T30-G

12 x T30-D



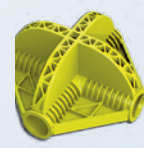
8 x C30-Y



2 x C30-K



16 x C30-T



2 x C30-X



6 x C30-H



2 x C30-RF



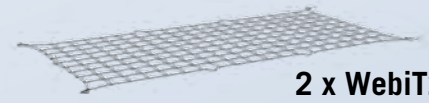
24 x C30-L



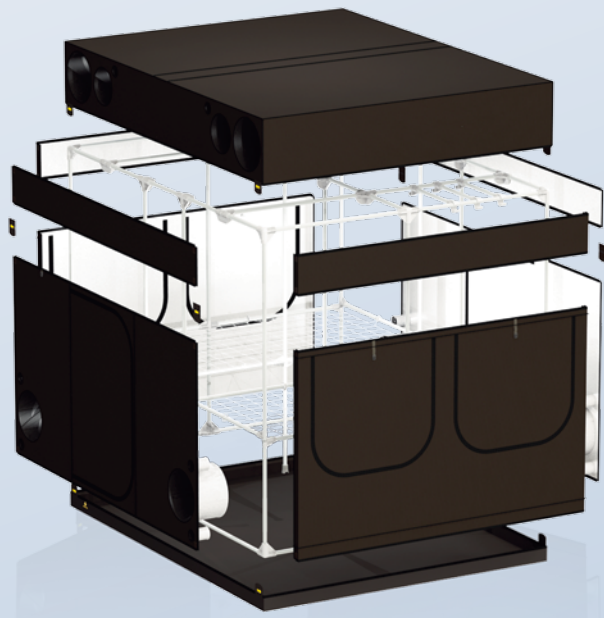
24 x C30-SB



24 x C30-SBR



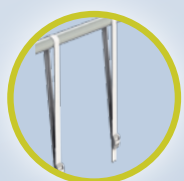
2 x WebiT240w



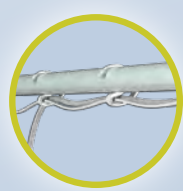
HookIT

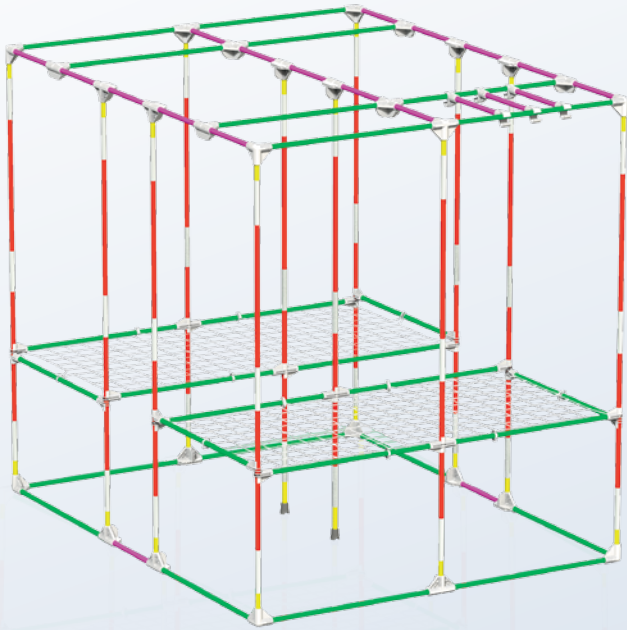


StrapIT

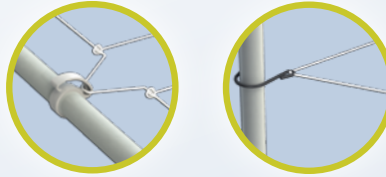


CableIT

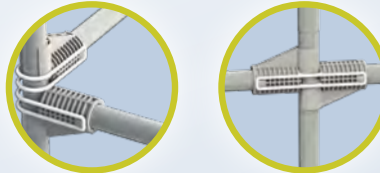




WebIT



Space Booster



Caoutchouc Feet

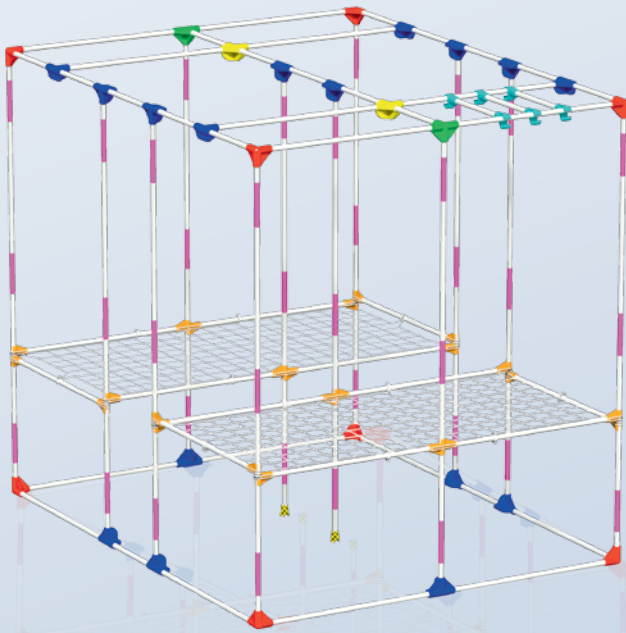


28 x T30-C

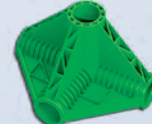
24 x T30-B

20 x T30-G

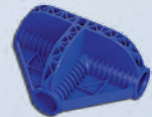
24 x T30-D



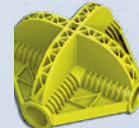
8 x C30-Y



2 x C30-K



16 x C30-T



2 x C30-X



6 x C30-H



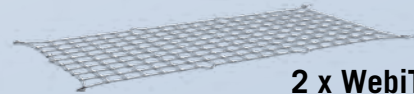
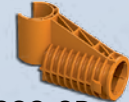
2 x C30-RF



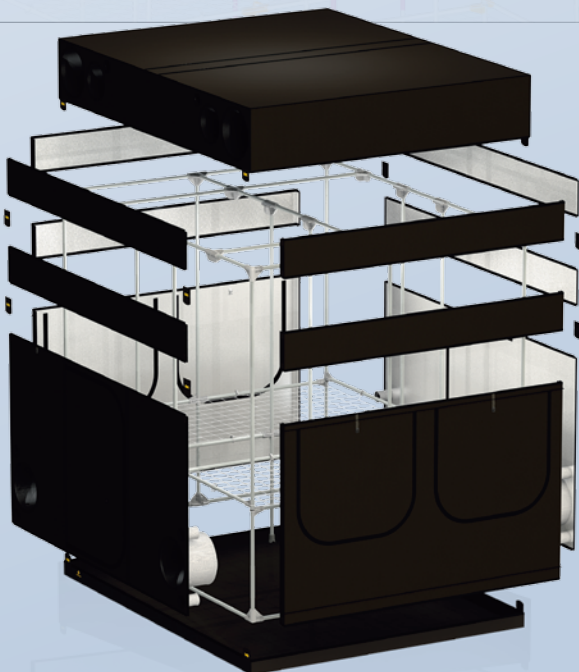
36 x C30-L



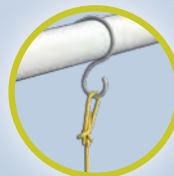
24 x C30-SB
24 x C30-SBR



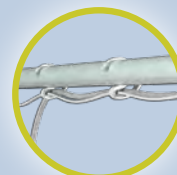
2 x WebiT240w



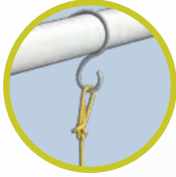
StrapIT



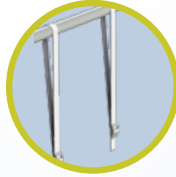
CableIT



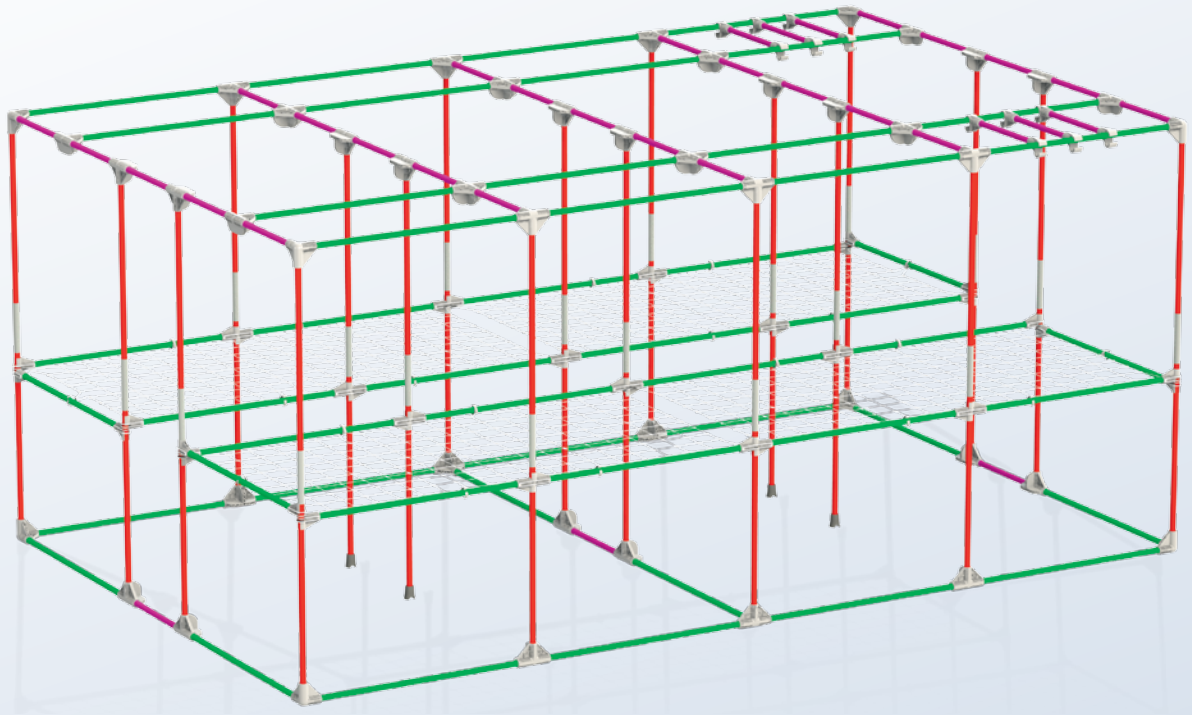
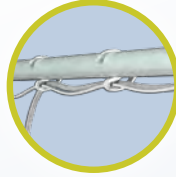
HookIT



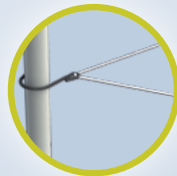
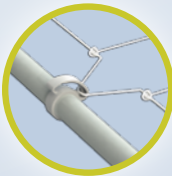
StrapIT



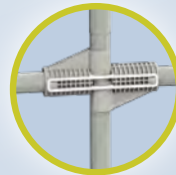
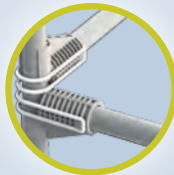
CableIT



WebIT



Space Booster



Caoutchouc Feet

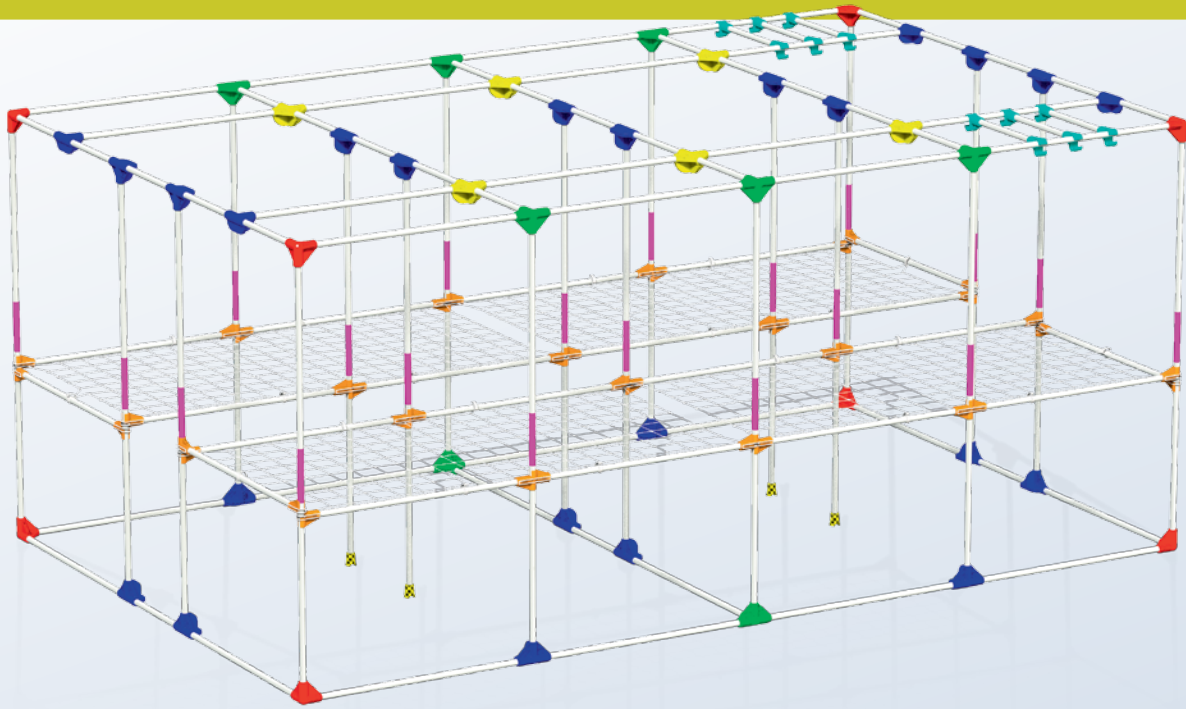




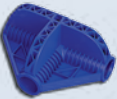
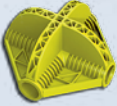


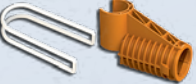
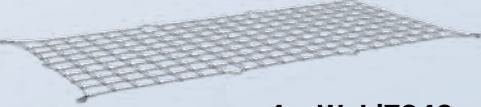

50 x T30-C

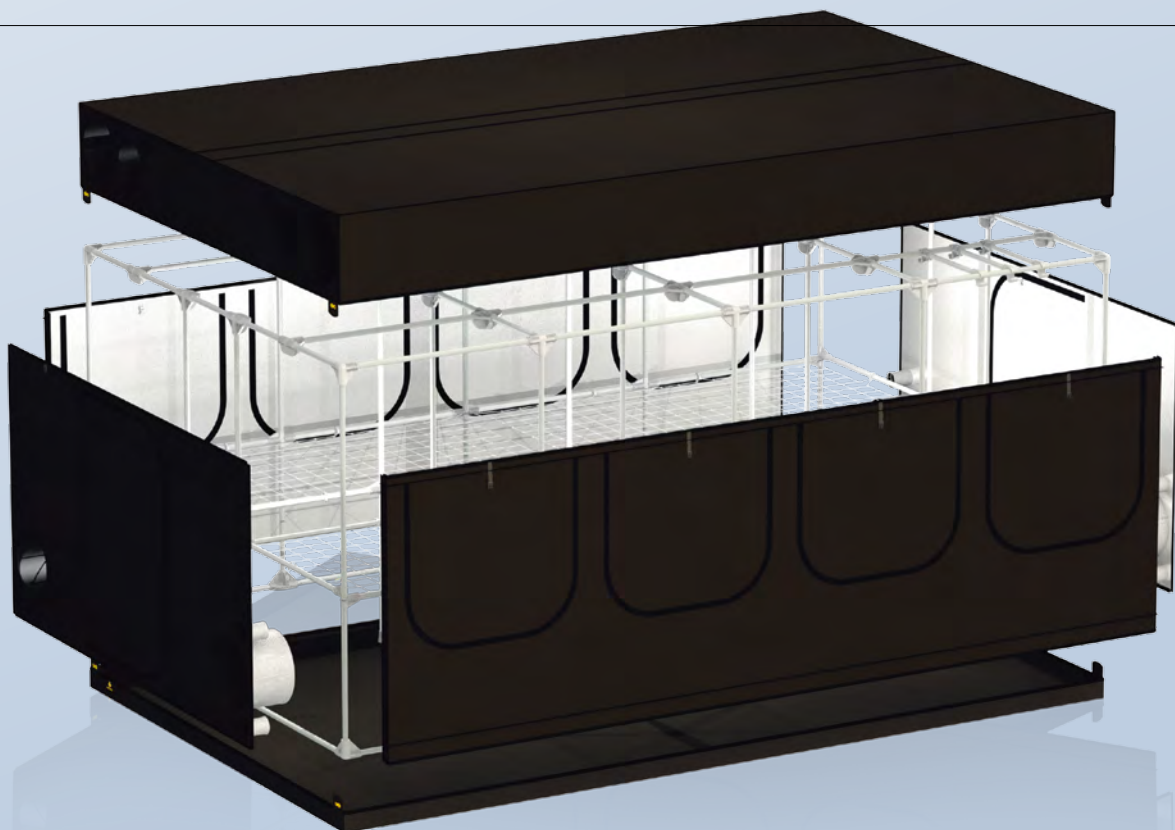
40 x T30-B

34 x T30-G

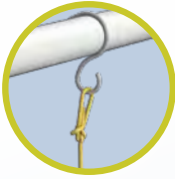




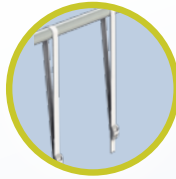
- 
8 x C30-Y
- 
8 x C30-K
- 
24 x C30-T
- 
6 x C30-X
- 
12 x C30-H
- 
4 x C30-RF
- 
40 x C30-SB
40 x C30-SBR
- 
4 x WebiT240w
- 
20 x C30-L



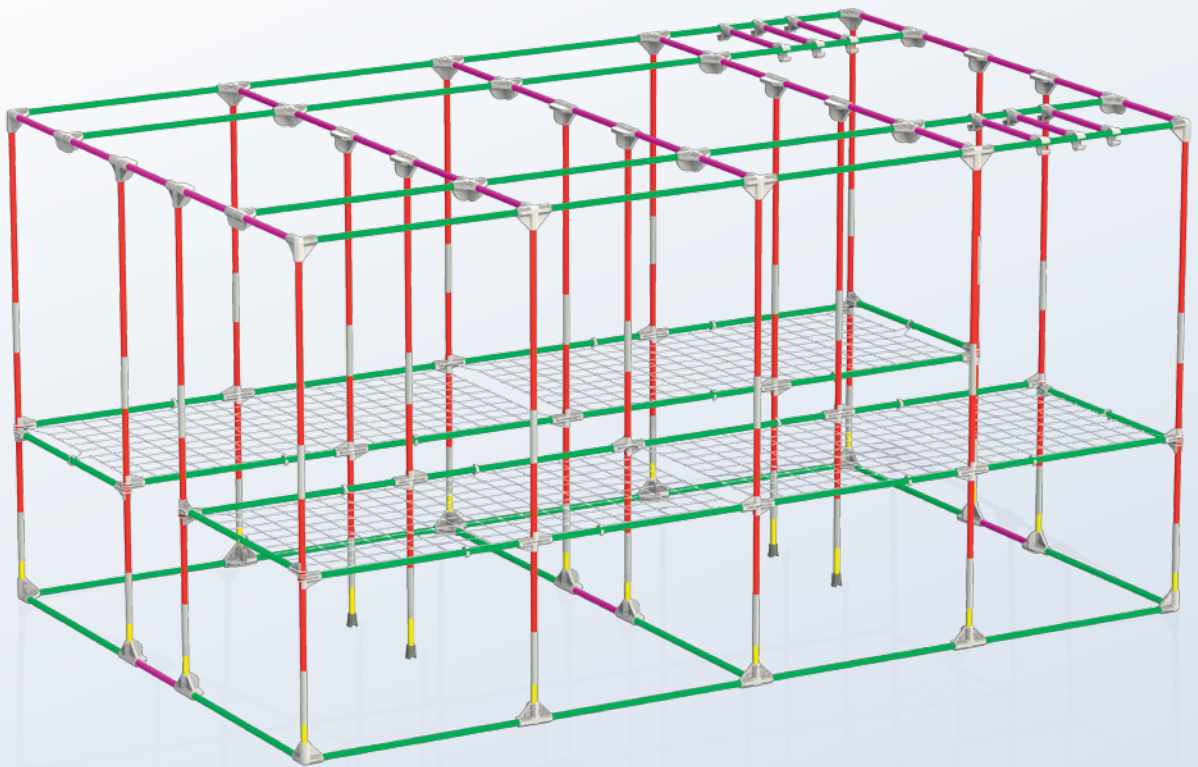
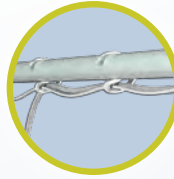
HookIT



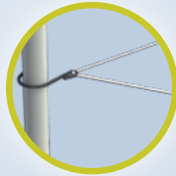
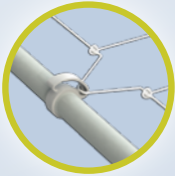
StrapIT



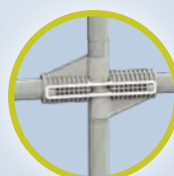
CableIT



WebIT



Space Booster



Caoutchouc Feet



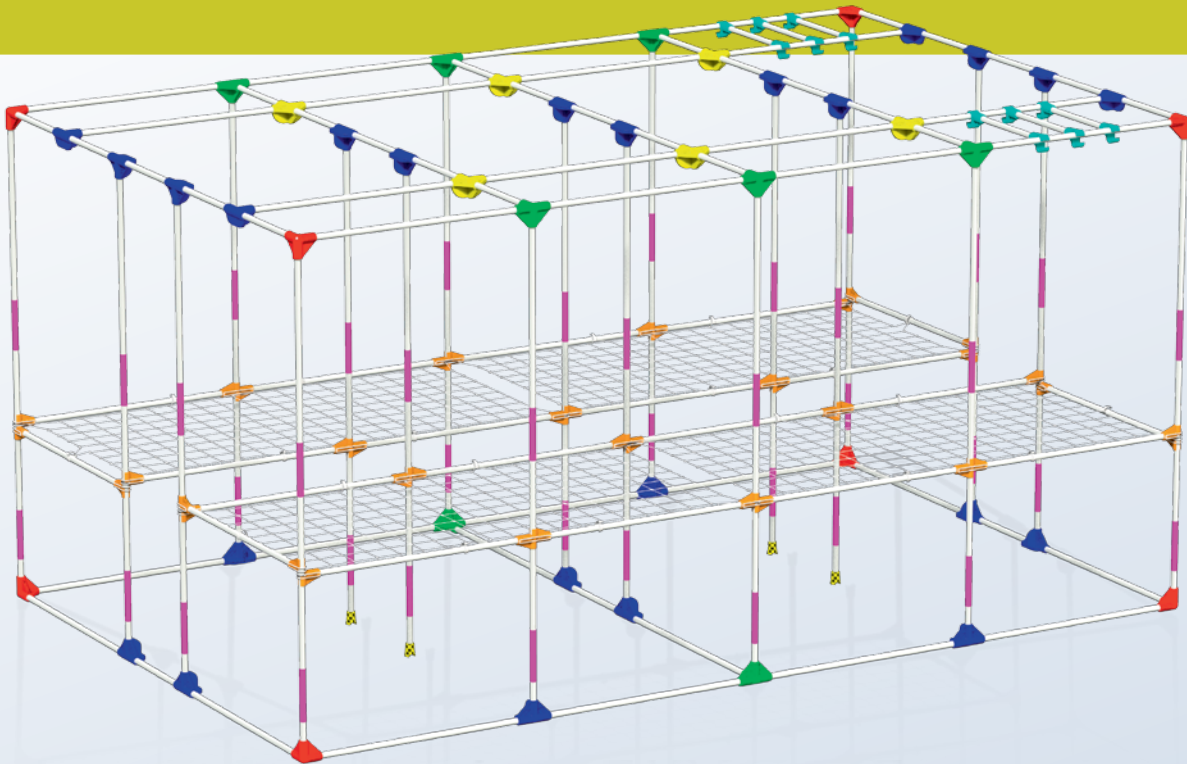
50 x T30-C

40 x T30-B

34 x T30-G

20 x T30-D

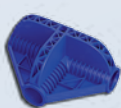




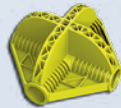
8 x C30-Y



8 x C30-T



24 x C30-T



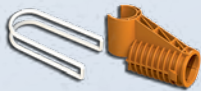
6 x C30-X



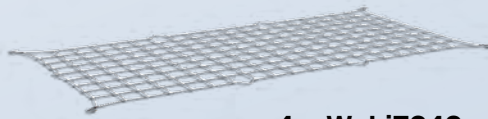
12 x C30-H



4 x C30-RF



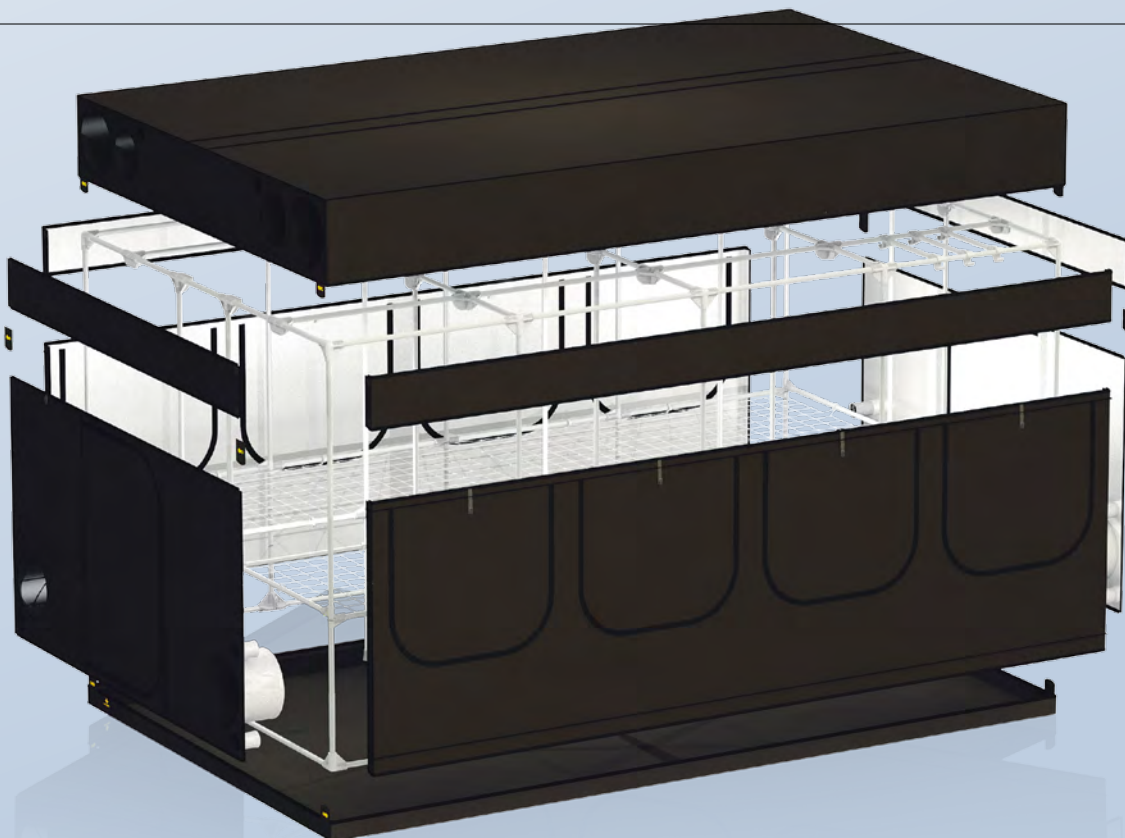
40 x C30-SB
40 x CR30-SBR



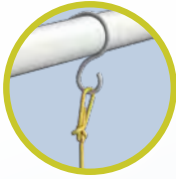
4 x WebiT240w



40 x C30-L



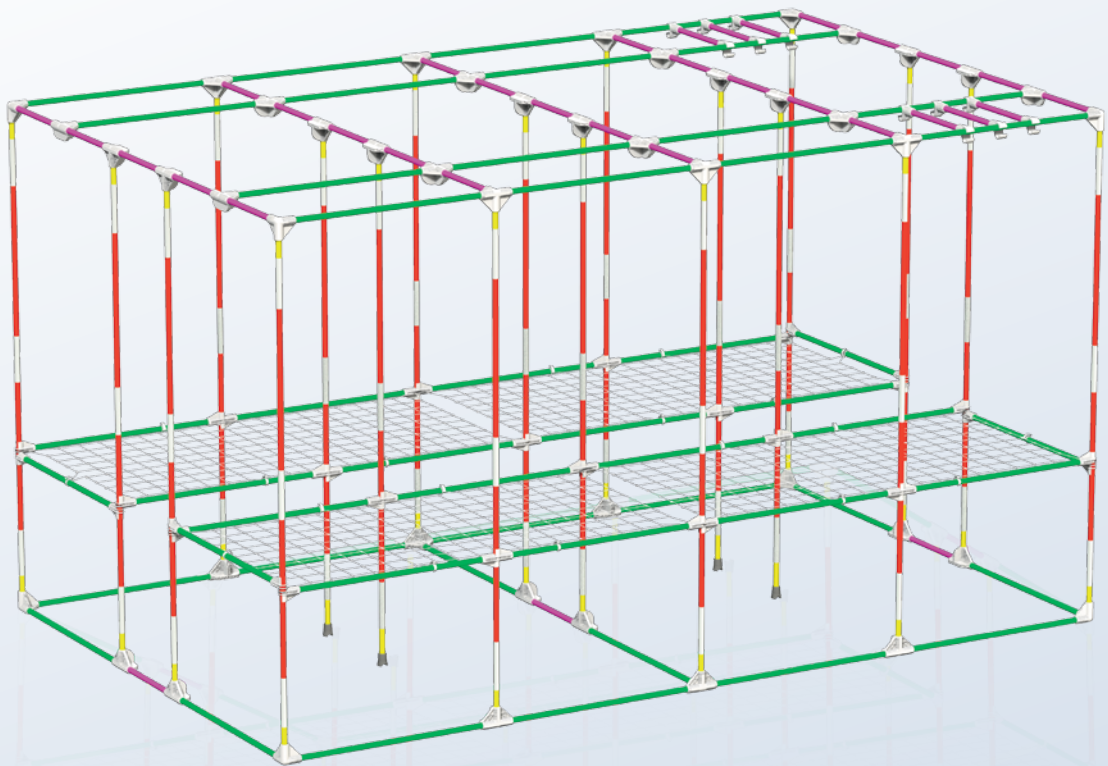
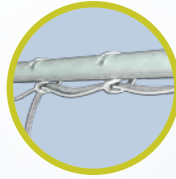
HookIT



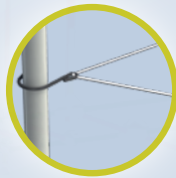
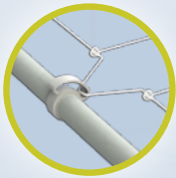
StrapIT



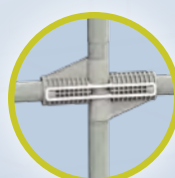
CableIT



WebIT



Space Booster



Caoutchouc Feet



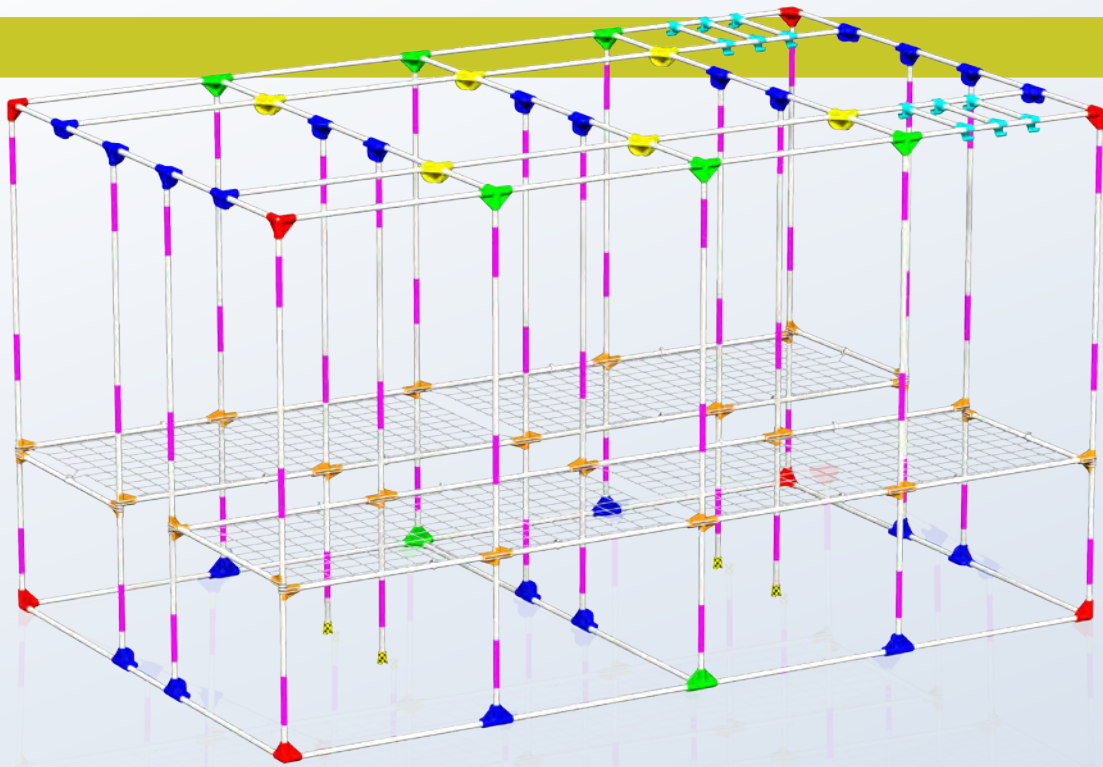
50 x T30-C



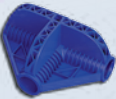
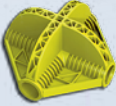


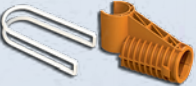


40 x T30-B

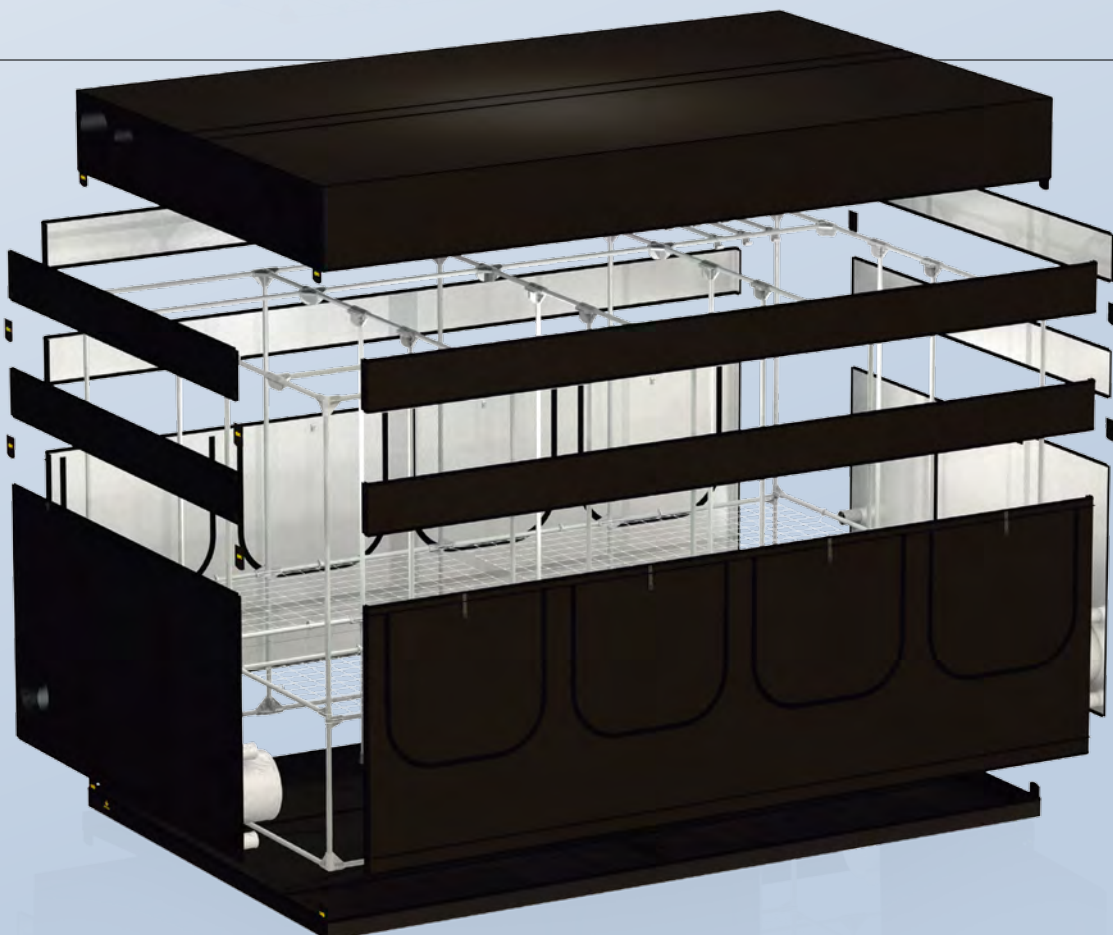
34 x T30-G

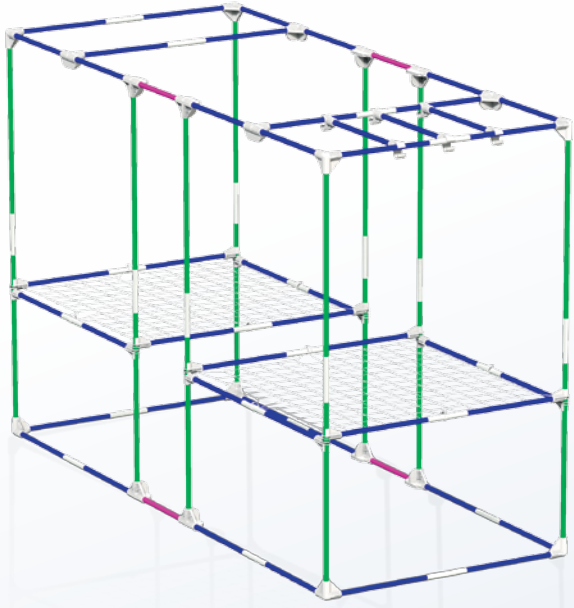
40 x T30-D



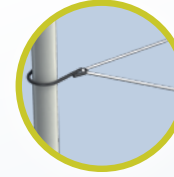
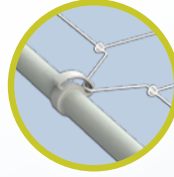


- 
8 x C30-Y
- 
8 x C30-T
- 
24 x C30-T
- 
6 x C30-X
- 
12 x C30-H
- 
4 x C30-RF
- 
40 x C30-SB
40 x CR30-SBR
- 
4 x WebiT240w
- 
60 x C30-L



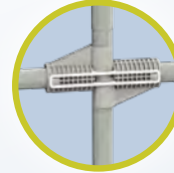
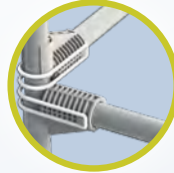


WebIT



16 x T30-C

Space Booster

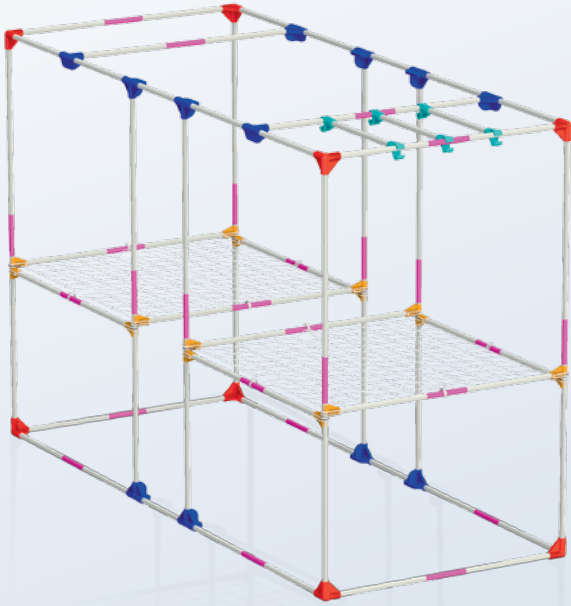


47 x T30-F

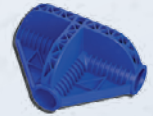
Caoutchouc Feet



4 x T30-G



8 x C30-Y



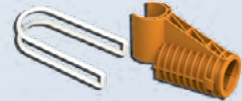
12 x C30-T



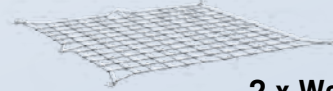
6 x C30-H



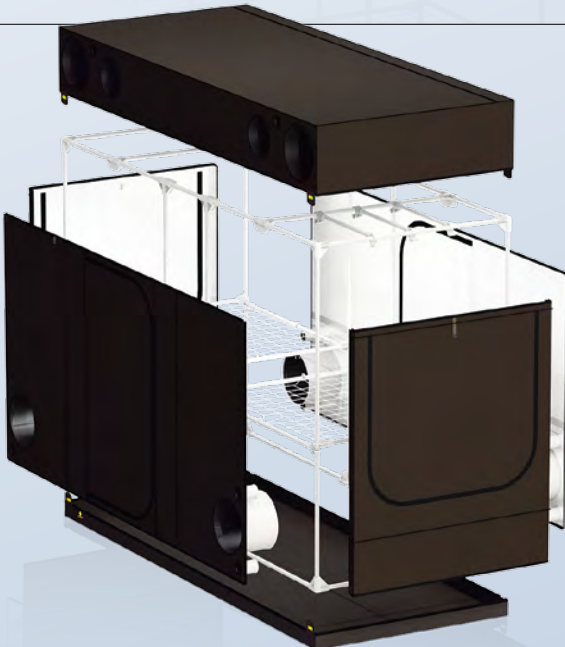
26 x C30-L



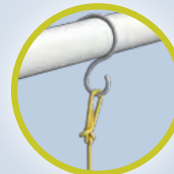
16 x C30-SBR



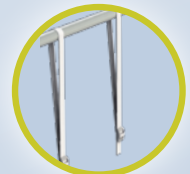
2 x Webi150



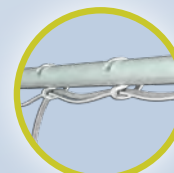
HookIT

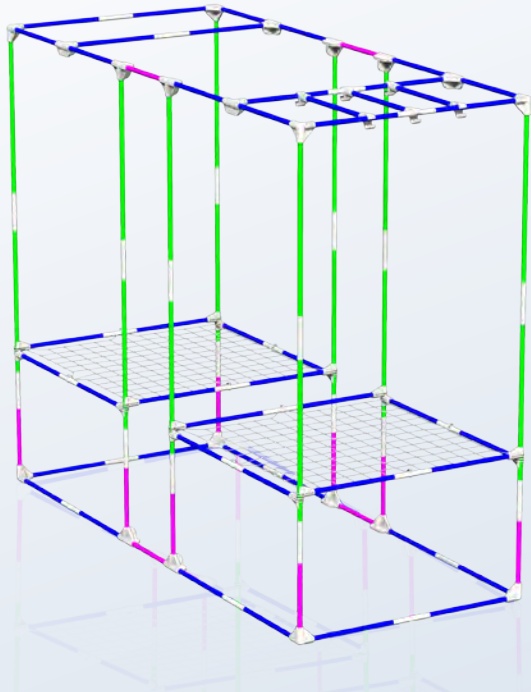


StrapIT

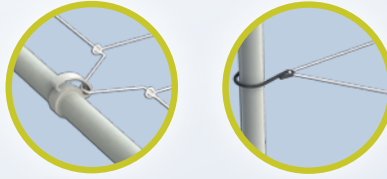


CableIT



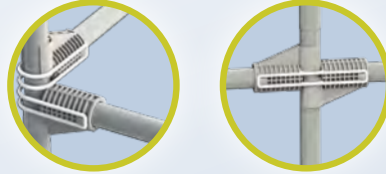


WebiT



16 x T30-C

Space Booster



47 x T30-F

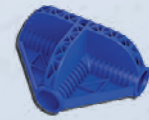
Caoutchouc Feet



12 x T30-G



8 x C30-Y



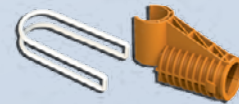
12 x C30-T



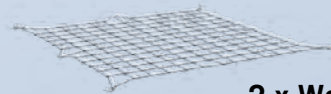
6 x C30-H



34 x C30-L



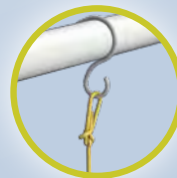
16 x C30-SBR



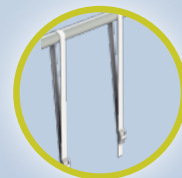
2 x WebiT150



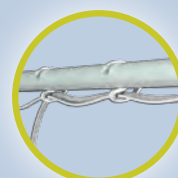
HookIT

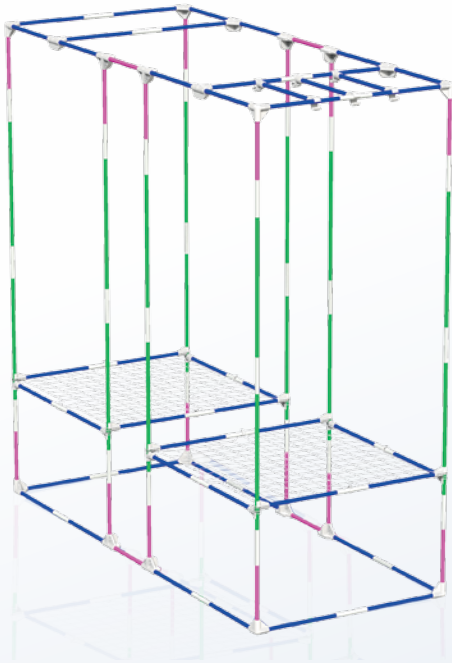


StrapIT

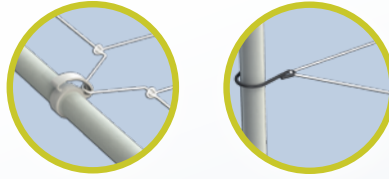


CableIT

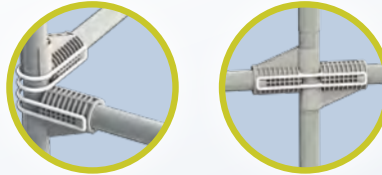




WebIT



Space Booster



Caoutchouc Feet



47 x T30-F



8 x C30-Y



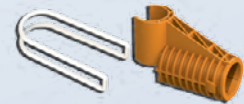
12 x C30-T



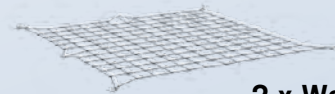
6 x C30-H



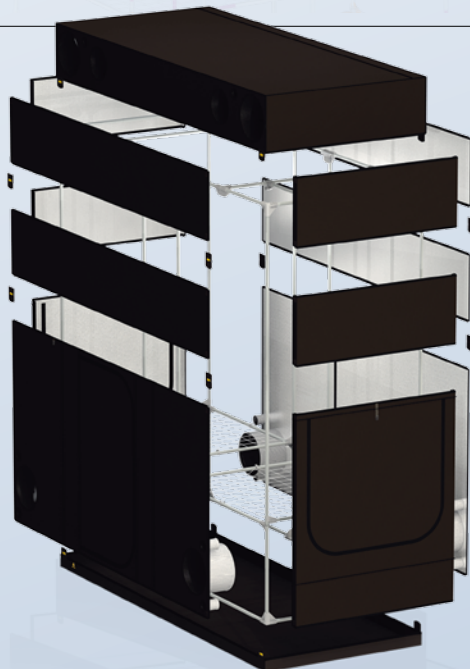
42 x C30-L



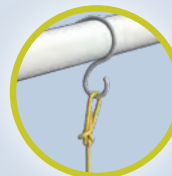
16 x C30-SBR



2 x WebiT150



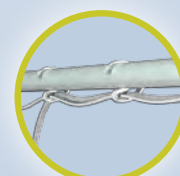
HookIT

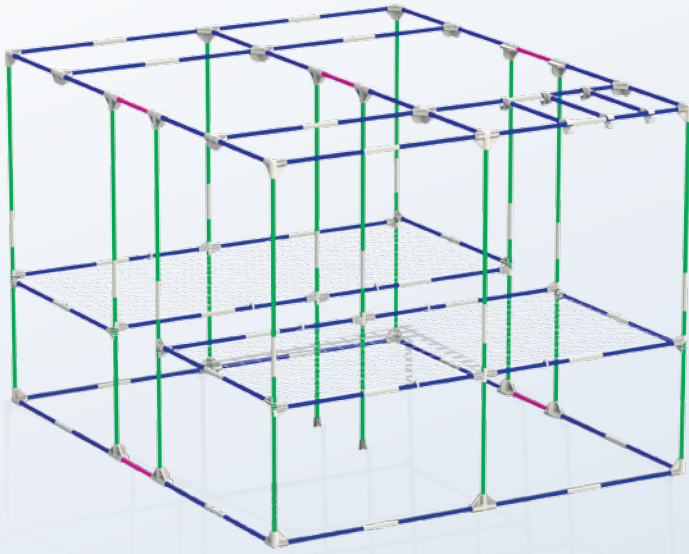


StrapIT

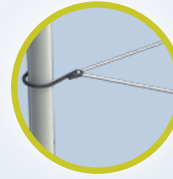
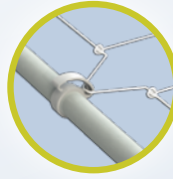


CableIT



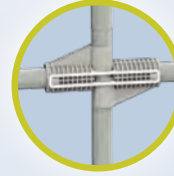
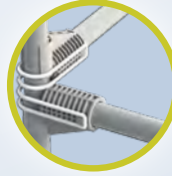


WebIT



24 x T30-C

Space Booster

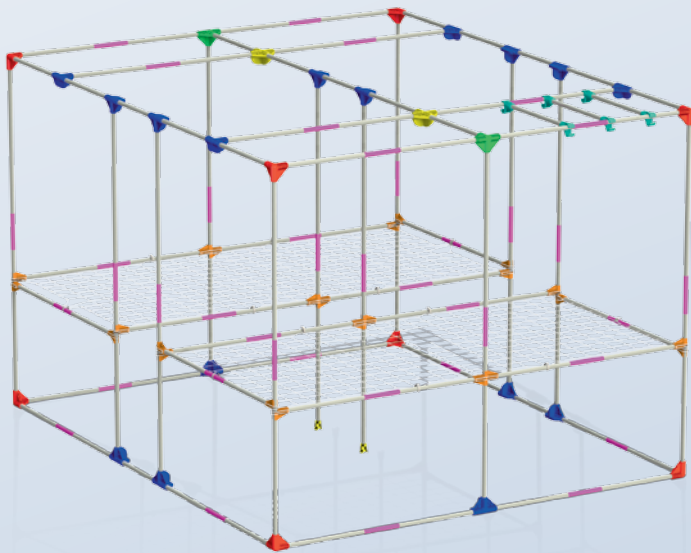


71 x T30-F

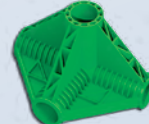
Caoutchouc Feet



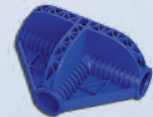
5 x T30-G



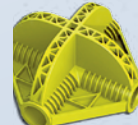
8 x C30-Y



2 x C30-K



16 x C30-T



2 x C30-x



6 x C30-H



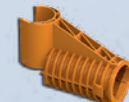
2 x C30-FR



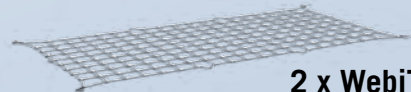
40 x C30-L



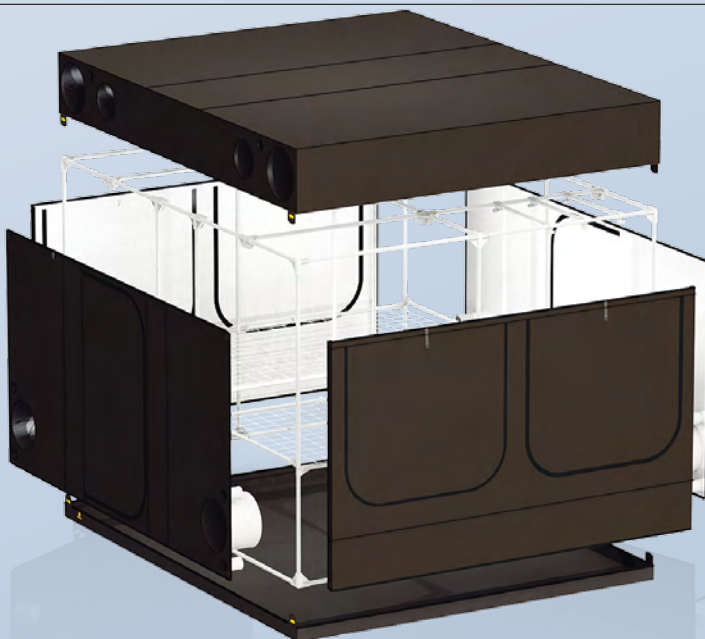
40 x C30-SB



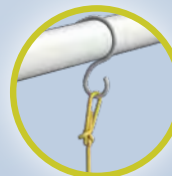
40 x C30-SBR



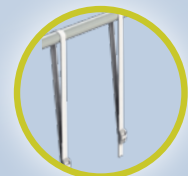
2 x WebiT300w



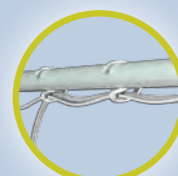
HookIT

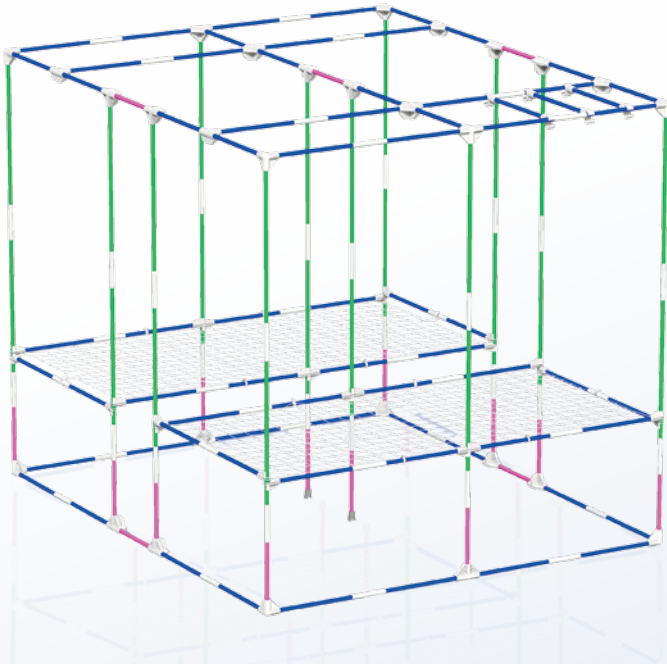


StrapIT

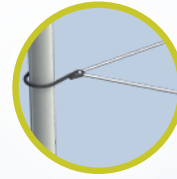
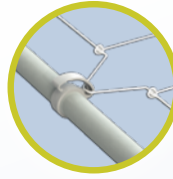


CableIT



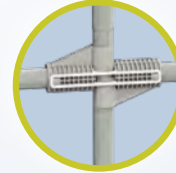
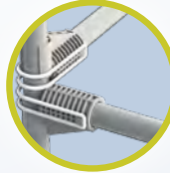


WebIT



24 x T30-C

Space Booster

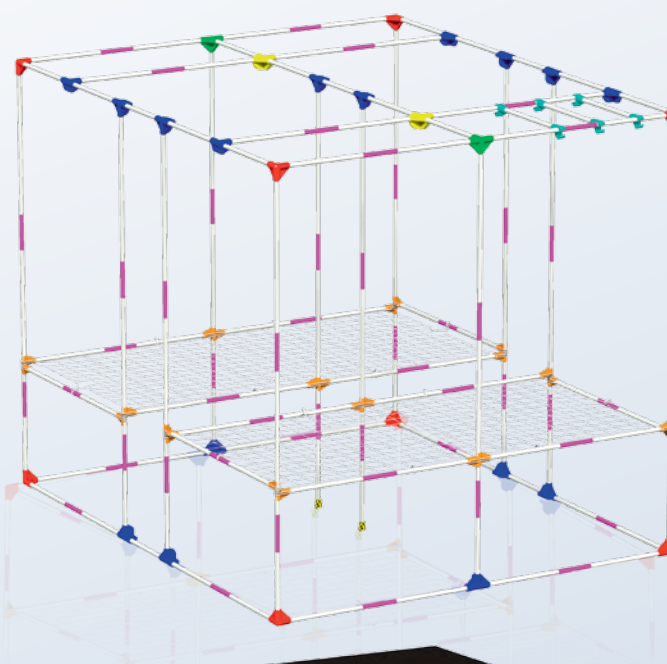


71 x T30-F

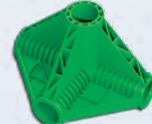
Caoutchouc Feet



17 x T30-G



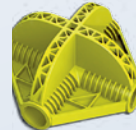
8 x C30-Y



2 x C30-K



16 x C30-T



2 x C30-x



6 x C30-H



2 x C30-FR



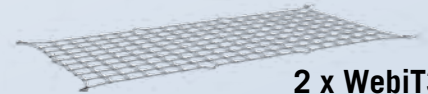
52 x C30-L



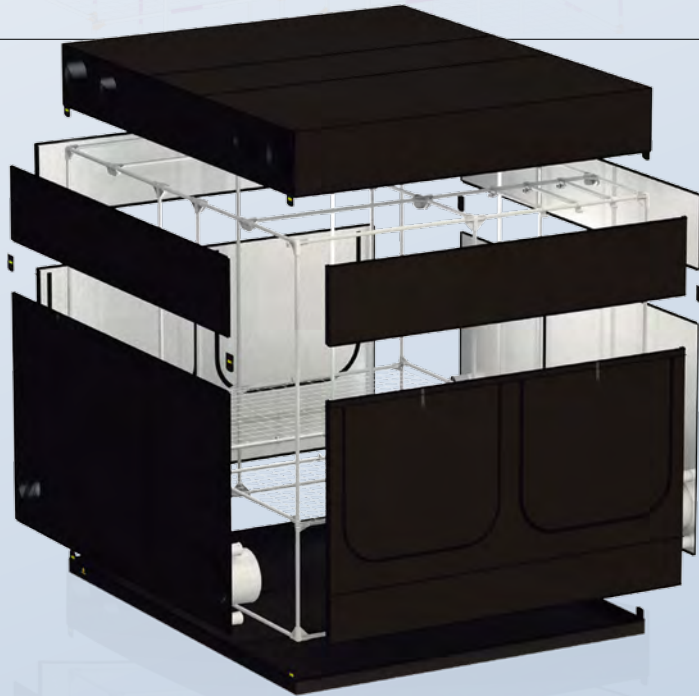
40 x C30-SB



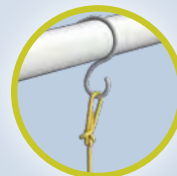
40 x CR30-SBR



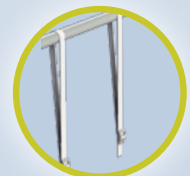
2 x WebiT300w



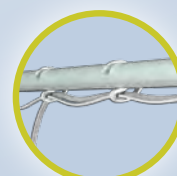
HookIT

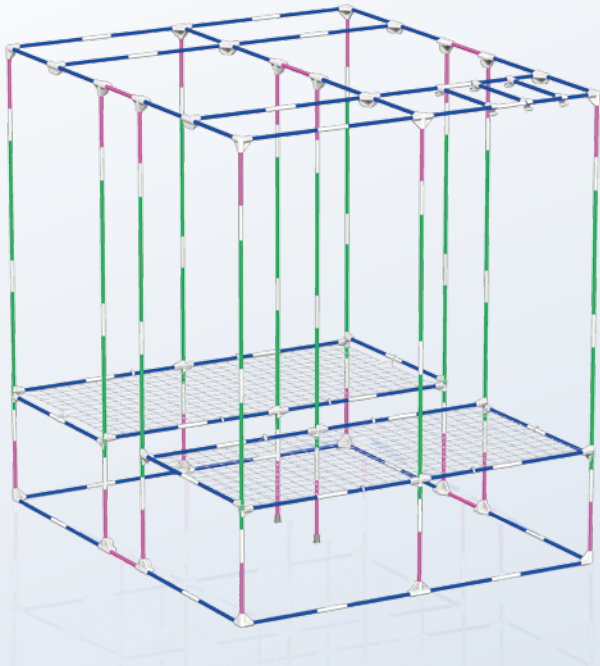


StrapIT

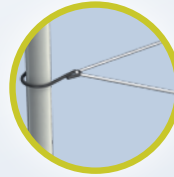
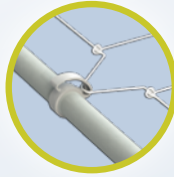


CableIT



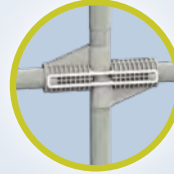
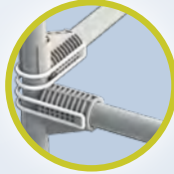


WebIT



24 x T30-C

Space Booster

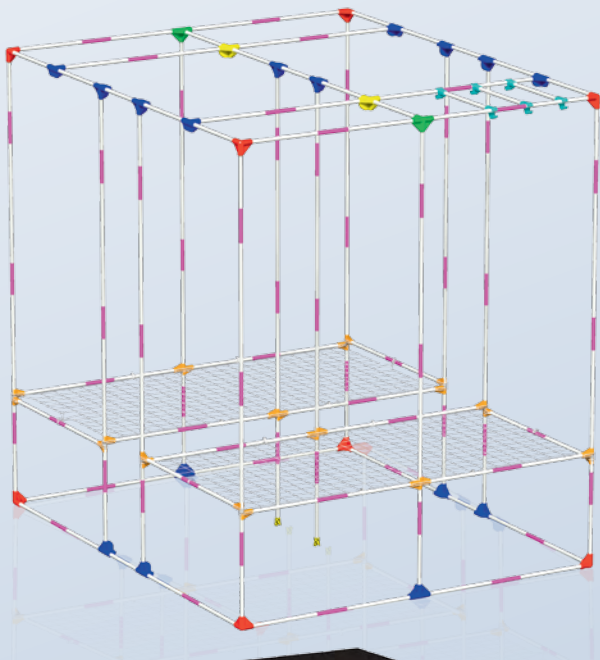


71 x T30-F

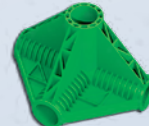
Caoutchouc Feet



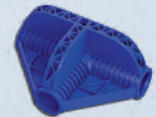
29 x T30-G



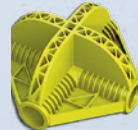
8 x C30-Y



2 x C30-K



16 x C30-T



2 x C30-x



6 x C30-H



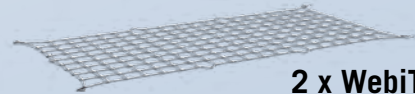
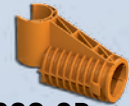
2 x C30-FR



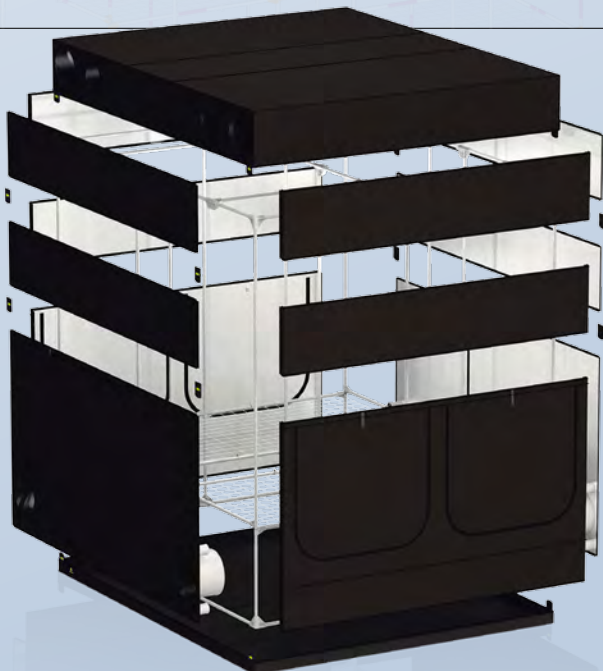
64 x C30-L



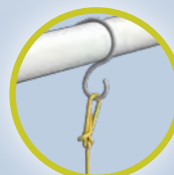
40 x C30-SB
40 x CR30-SBR



2 x WebiT300w



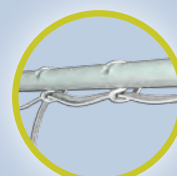
HookIT



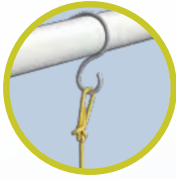
StrapIT



CableIT



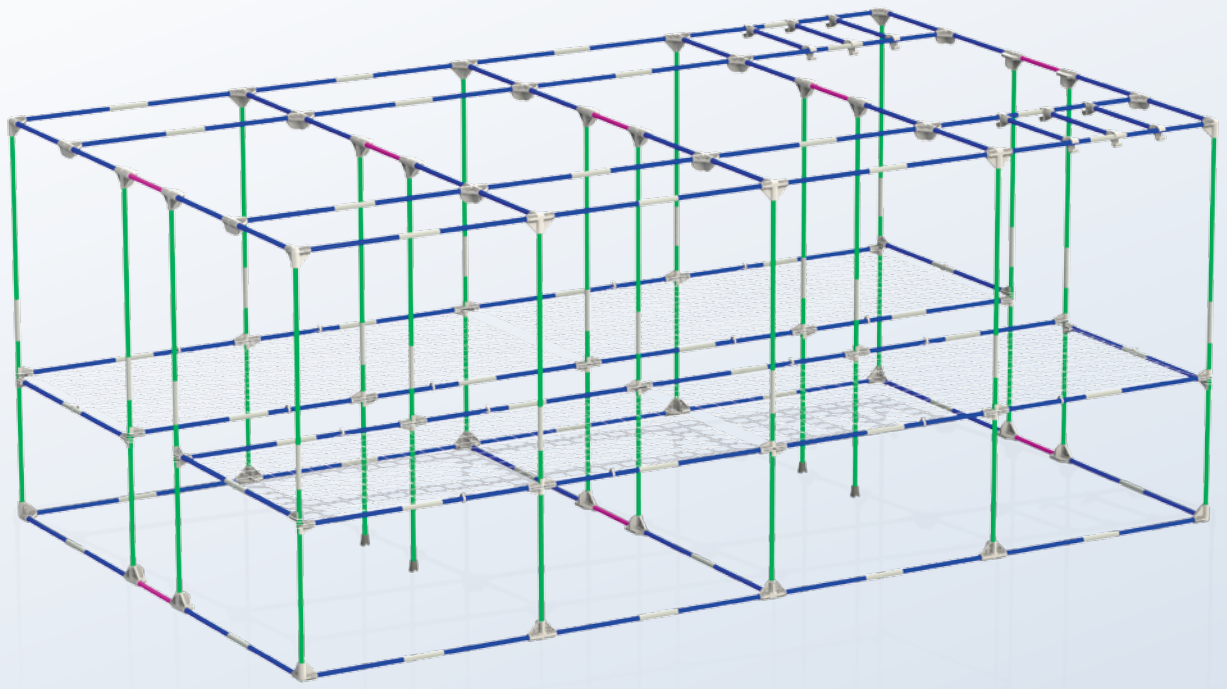
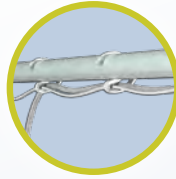
HookIT



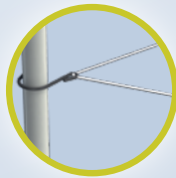
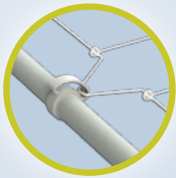
StrapIT



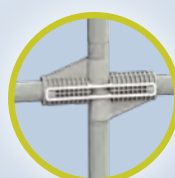
CableIT



WebIT



Space Booster



Caoutchouc Feet

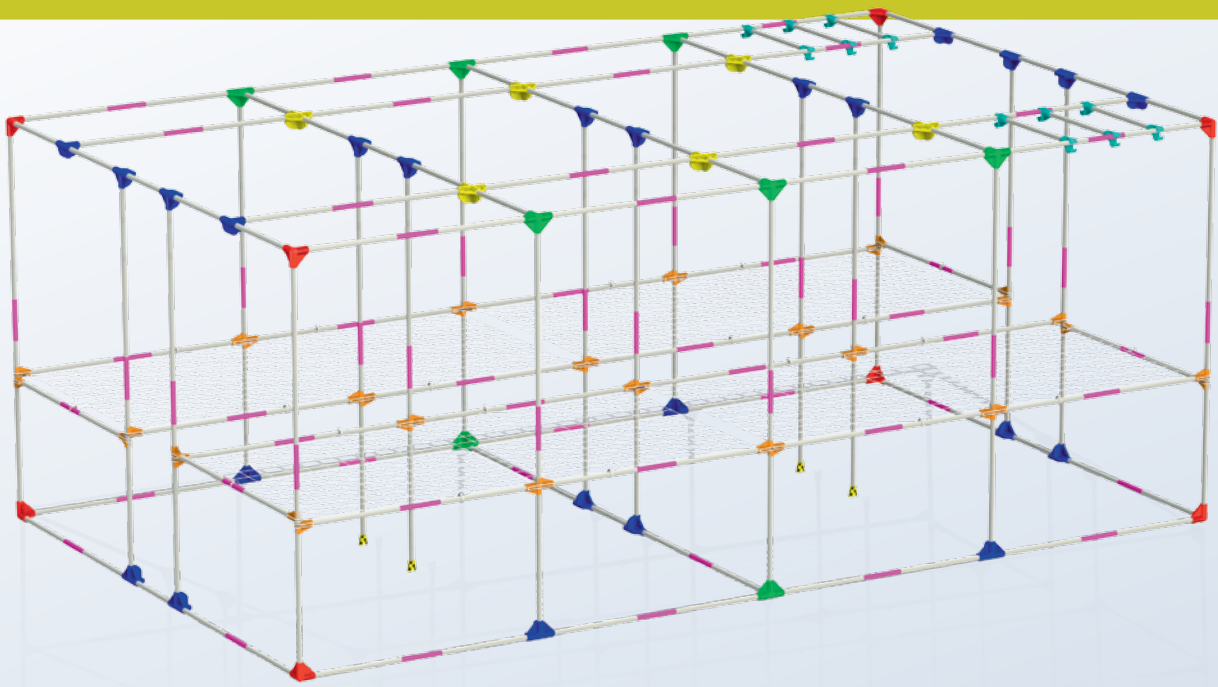


40 x T30-C

126 x T30-F

8 x T30-G

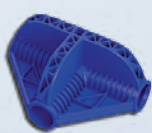




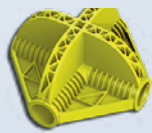
8 x C30-Y



8 x C30-K



24 x C30-T



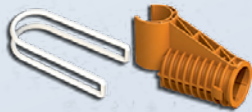
6 x C30-X



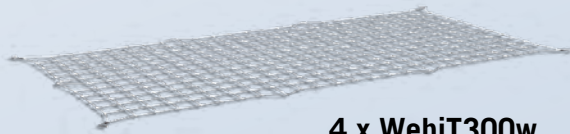
12 x C30-H



4 x C30-RF



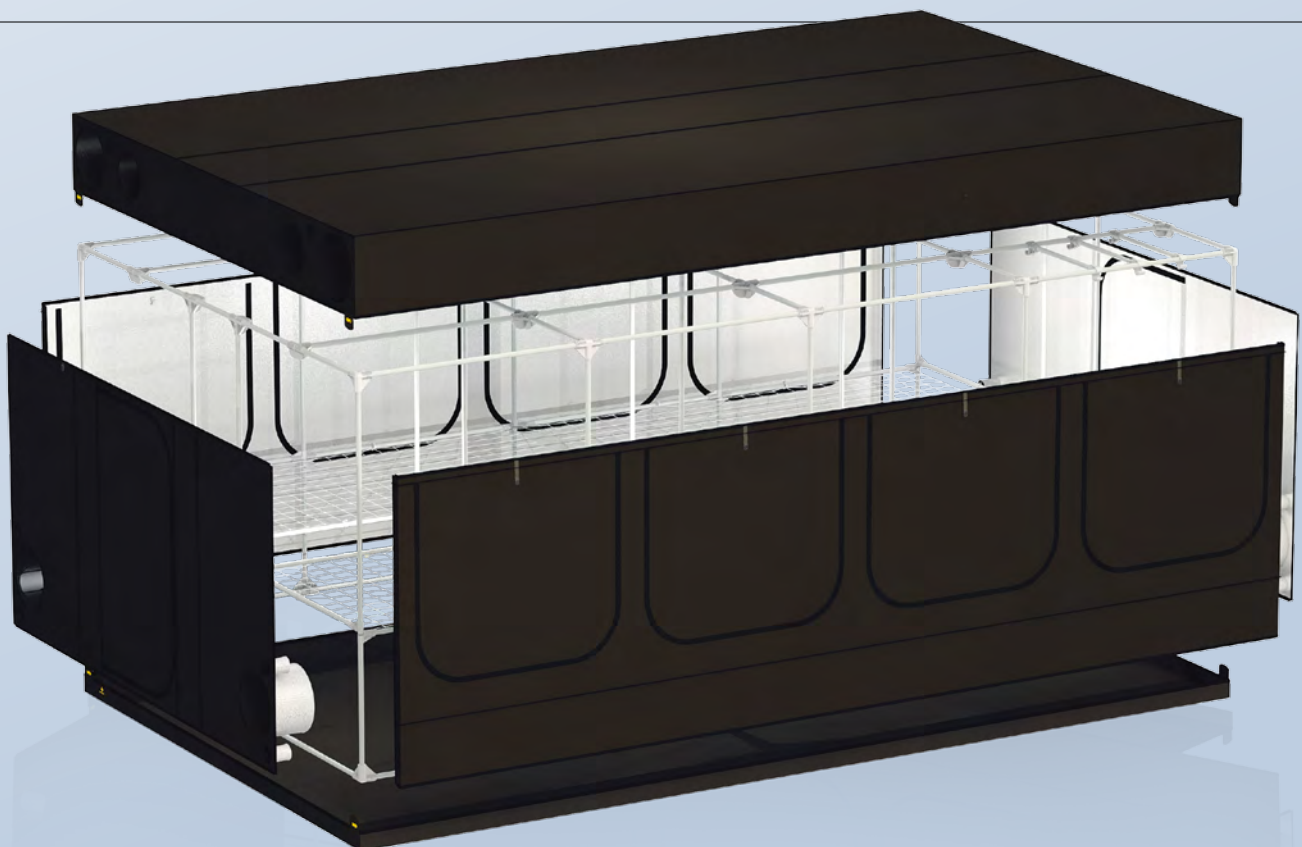
40 x C30-SB
40 x CR30-SBR



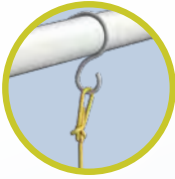
4 x WebiT300w



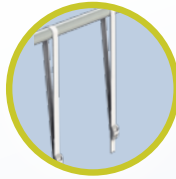
70 x C30-L



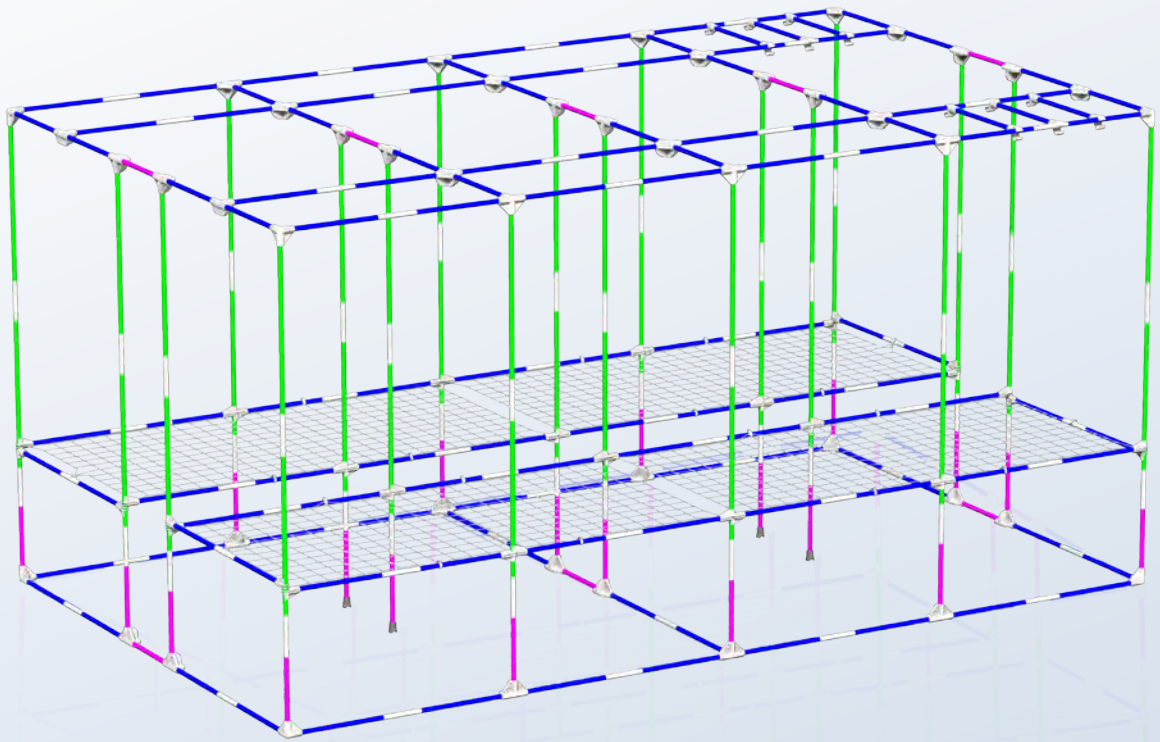
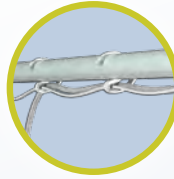
HookIT



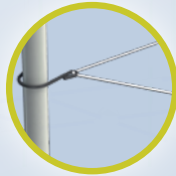
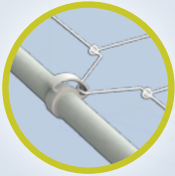
StrapIT



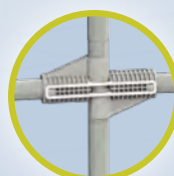
CableIT



WebIT



Space Booster



40 x T30-C

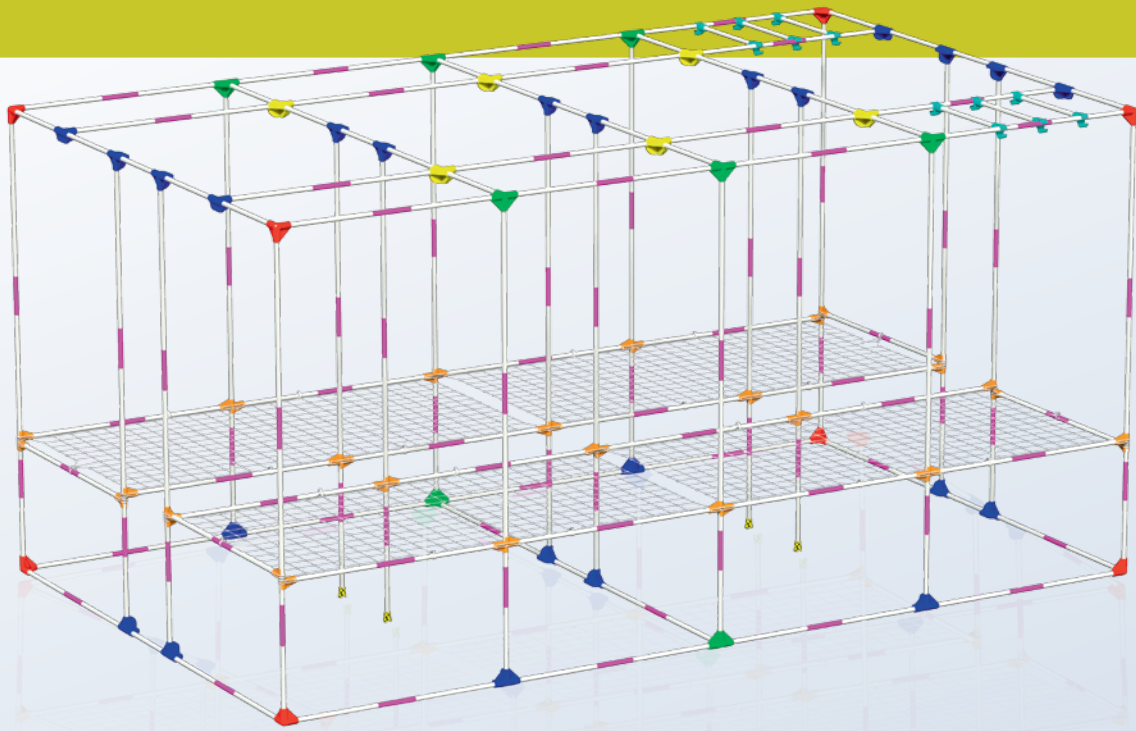
126 x T30-F

Caoutchouc Feet

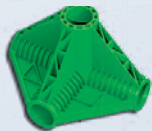


28 x T30-G





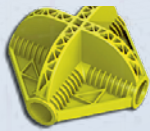
8 x C30-Y



8 x C30-K



24 x C30-T



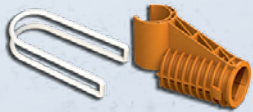
6 x C30-X



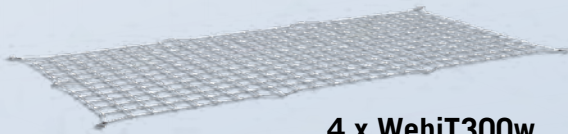
12 x C30-H



4 x C30-RF



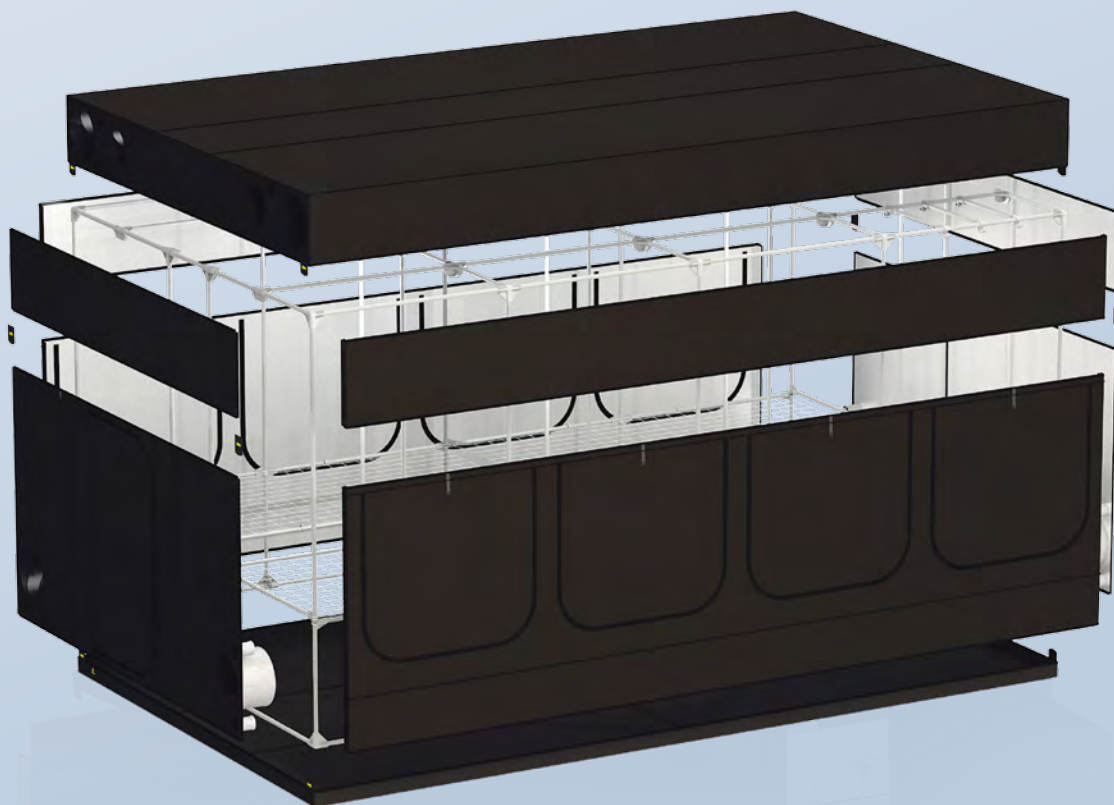
40 x C30-SB
40 x CR30-SBR



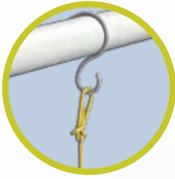
4 x WebiT300w



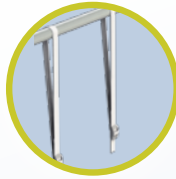
90 x C30-L



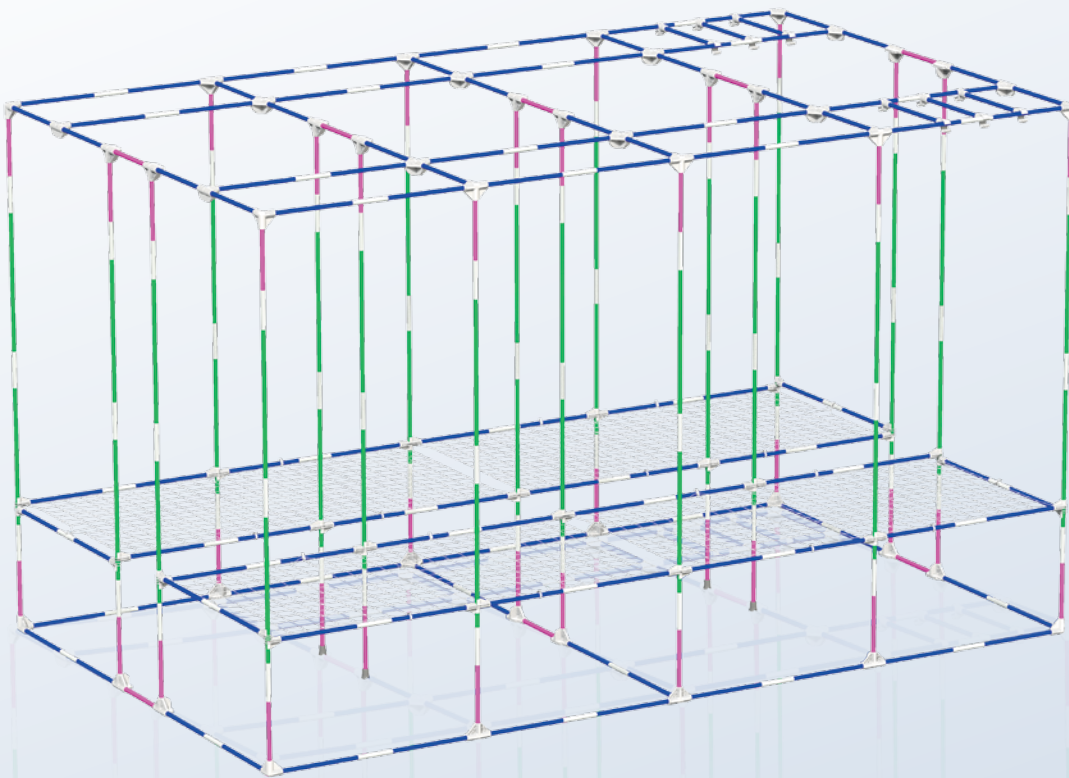
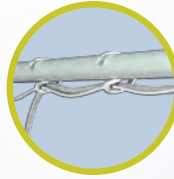
HookIT



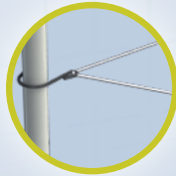
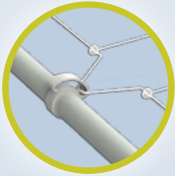
StrapIT



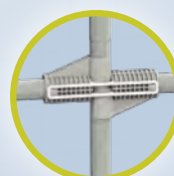
CableIT



WebIT



Space Booster



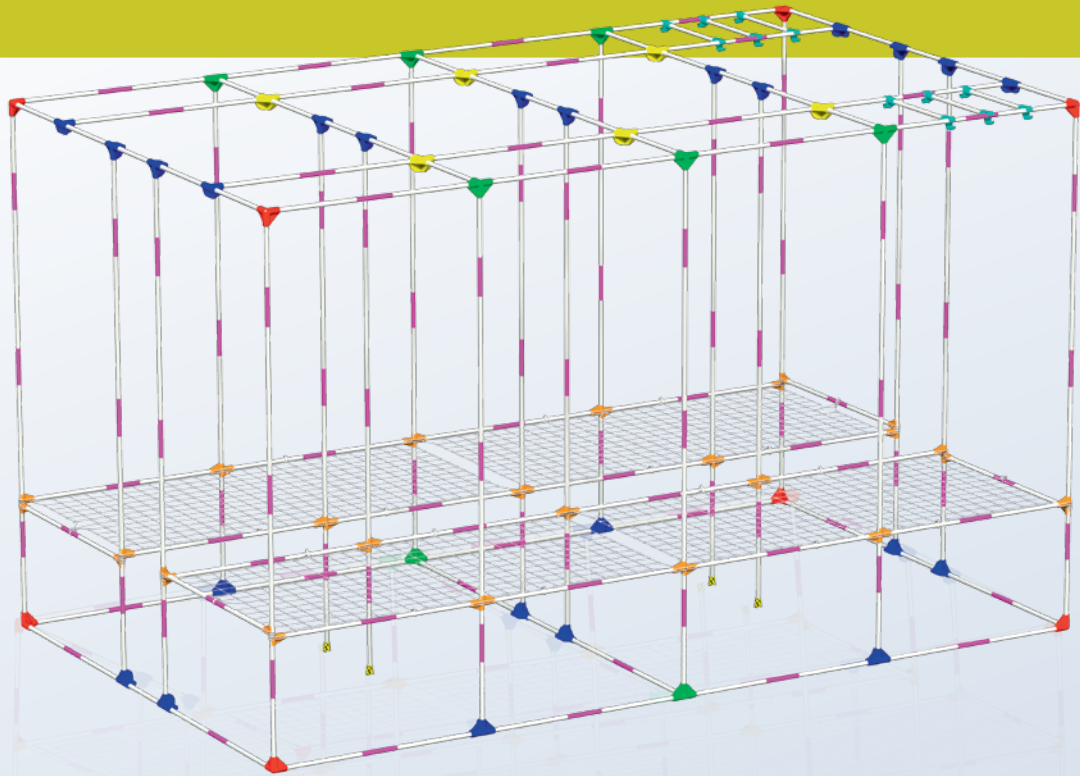
40 x T30-C


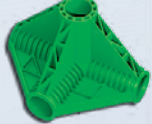
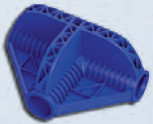
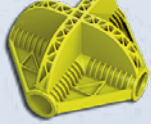


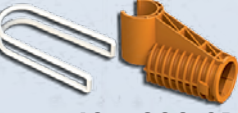
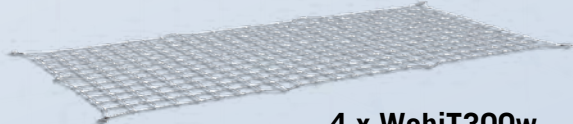

126 x T30-F

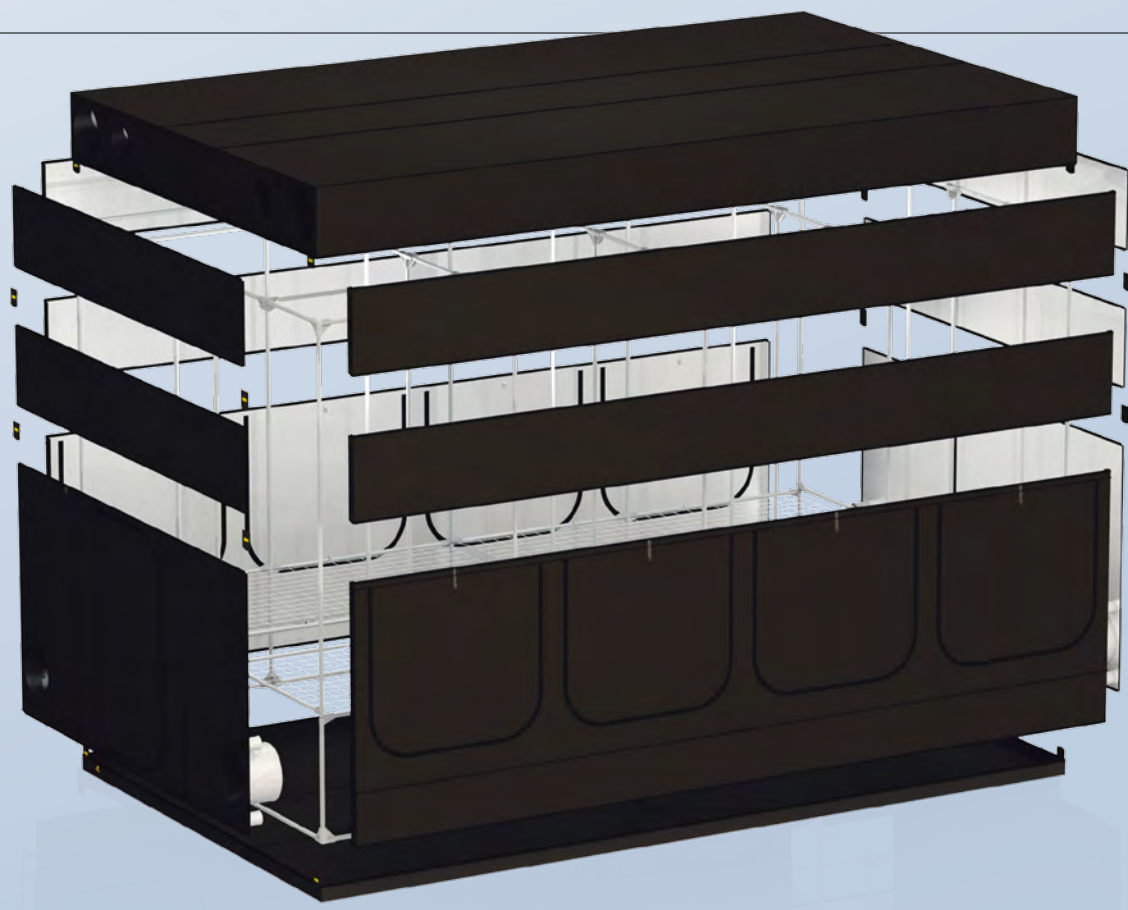
48 x T30-G

Caoutchouc Feet





- 
8 x C30-Y
- 
8 x C30-K
- 
24 x C30-T
- 
6 x C30-X
- 
12 x C30-H
- 
4 x C30-RF
- 
40 x C30-SB
40 x CR30-SBR
- 
4 x WebiT300w
- 
110 x C30-L





TENTS CONTENTS

| EXPERT | DESIGNATION | DESIGNATION | INT120 | INT240 |
|---------|------------------------------------|------------------------------------|--------|--------|
| T30-B | Pole Ø30 mm 1020 mm long | Pole Ø1.2" 40.2" long | 16 | 24 |
| T30-C | Pole Ø30 mm 1157 mm long | Pole Ø1.2" 45.5" long | 18 | 28 |
| T30-D | Pole Ø30 mm 268 mm long | Pole Ø1.2" 10.5" long | | |
| T30-F | Pole Ø30 mm 712,5 mm long | Pole Ø1.2" 28.1" long | | |
| T30-G | Pole Ø30 mm 562,5 mm long | Pole Ø1.2" 22.2" long | 15 | 20 |
| C30-Y | Corner Ø30 mm 3 axes Y shape | Corner Ø1.20" 3 axes Y shape | 8 | 8 |
| C30-K | Corner Ø30 mm 4 axes K shape | Corner Ø1.20" 4 axes K shape | | 2 |
| C30-T | Corner Ø30 mm 3 axes T shape | Corner Ø1.20" 4 axes T Shape | 12 | 16 |
| C30-X | Corner Ø30 mm 4 axes X shape | Corner Ø1.20" 4 axes X shape | | 2 |
| C30-L | Link Ø30 mm Straight Joint | Link Ø1.20" Straight Joint | 8 | 12 |
| C30-H | Handling Ø30 mm 1 axe I shape | Corner Ø1.20" Handling | 6 | 6 |
| C30-SB | Space Booster Ø30 mm 1 axe I shape | Space Booster Ø1.20" 1 axe I shape | 16 | 24 |
| C30-SBR | Space Booster Rubber | Space Booster Rubber | 16 | 24 |
| C30-RF | Rubber Feet Ø30 mm 1 axe I shape | Rubber Feet Ø1.20" 1 axe I shape | | 2 |

TENTS SPECIFICATIONS METRIC

| EXPERT GROW TENTS | | | WGT | ASSEMBLED | | | WEBBING | DOUBLE LAYERS SOCK CONFIG | | | | | |
|-------------------|------------------------|-------|--------|-----------|------|---------------|--------------------------|---------------------------|---------------------|-----------------|-------|--------------------|--|
| REF | DESIGNATION | REV | Net kg | L cm | W cm | H cm (option) | WebIT Elastic Web Thread | Extraction Ø (mm) # | Intraction Ø (mm) # | Cables Ø (mm) # | | CoolTubes Ø (mm) # | |
| INT120 | Intense 120x300x215 cm | R3.00 | 46 | 120 | 300 | 215 (245-275) | 2 WebIT120 | 380 4 | 380 4 | 75 12 | 280 4 | | |
| INT240 | Intense 240x300x215 cm | R3.00 | 65 | 240 | 300 | 215 (245-275) | 2 WebIT240w | 380 4 | 380 4 | 75 12 | 280 4 | | |
| INT480 | Intense 480x300x215 cm | R3.00 | 102 | 480 | 300 | 215 (245-275) | 4 WebIT240w | 380 4 | 380 4 | 75 12 | 280 4 | | |
| INT150 | Intense 150x360x242 cm | R3.00 | 52 | 150 | 360 | 242 (302-362) | 2 WebIT150 | 380 4 | 380 4 | 75 12 | 280 4 | | |
| INT300 | intense 300x360x242 cm | R3.00 | 84 | 300 | 360 | 242 (302-362) | 2 WebIT300w | 380 4 | 380 4 | 75 12 | 280 4 | | |
| INT600 | Intense 600x360x242 cm | R3.00 | 141 | 600 | 360 | 242 (302-362) | 4 WebIT300w | 380 4 | 380 4 | 75 12 | 280 4 | | |

MAIN TECHNO

Main Fabric : Mylar 900D - Poles Ø30 mm - Plastic Corners 8 mm thick - Water Tray : 800 gr Fibered Liner
Space Booster Inc. - Web Plant Support Inc - Bag Fabric : 600D

TENTS SPECIFICATIONS IMPERIAL

| EXPERT GROW TENTS | | | WGT | ASSEMBLED | | | WEBBING | DOUBLE LAYERS SOCK CONFIG | | | | | |
|-------------------|------------------------|-------|--------|-----------|-------|---------------|------------------------------|---------------------------|---------------------|-----------------|------|--------------------|--|
| REF | DESIGNATION | REV | Net lb | L in | W in | H in (option) | WebIT (Elastic) Web (Thread) | Extraction Ø (in) # | Intraction Ø (in) # | Cables Ø (in) # | | CoolTubes Ø (in) # | |
| INT120 | Intense 4' x 10' x 7' | R3.00 | 101 | 47 | 118 | 85 (97-108) | 2 WebIT120 | 15 4 | 15 4 | 3 12 | 11 4 | | |
| INT240 | Intense 8' x 10' x 7' | R3.00 | 143 | 94,5 | 118 | 85 (97-108) | 2 WebIT240w | 15 4 | 15 4 | 3 12 | 11 4 | | |
| INT480 | Intense 16' x 10' x 7' | R3.00 | 225 | 189 | 118 | 85 (97-108) | 4 WebIT240w | 15 4 | 15 4 | 3 12 | 11 4 | | |
| INT150 | Intense 5' x 12' x 8' | R3.00 | 115 | 59 | 141,5 | 95 (119-142) | 2 WebIT150 | 15 4 | 15 4 | 3 12 | 11 4 | | |
| INT300 | Intense 10' x 12' x 8' | R3.00 | 185 | 118 | 141,5 | 95 (119-142) | 2 WebIT300w | 15 4 | 15 4 | 3 12 | 11 4 | | |
| INT600 | intense 20' x 12' x 8' | R3.00 | 311 | 236 | 141,5 | 95 (119-142) | 4 WebIT300w | 15 4 | 15 4 | 3 12 | 11 4 | | |

MAIN TECHNO

Main Fabric : Mylar 900D - Poles Ø1.20" - Plastic Corners 0.3" thick - Water Tray : 800 gr Fibered Liner
Space Booster Inc. - Web Plant Support Inc - Bag Fabric : 600D



| INT480 | INT150 | INT300 | INT600 | INT120H | INT240H | INT480H | INT150H | INT300H | INT600H |
|--------|--------|--------|--------|---------|---------|---------|---------|---------|---------|
| 40 | | | | | | | | | |
| 50 | 16 | 24 | 40 | | | | | | |
| | | | | 8 | 12 | 20 | | | |
| | 47 | 71 | 126 | | | | | | |
| 34 | 4 | 5 | 8 | | | | 8 | 12 | 20 |
| 8 | 8 | 8 | 8 | | | | | | |
| 8 | | 2 | 8 | | | | | | |
| 24 | 12 | 16 | 24 | | | | | | |
| 6 | | 2 | 6 | | | | | | |
| 20 | 26 | 40 | 70 | 8 | 12 | 20 | 8 | 12 | 20 |
| 12 | 6 | 6 | 12 | | | | | | |
| 40 | 16 | 24 | 40 | | | | | | |
| 40 | 16 | 24 | 40 | | | | | | |
| 4 | | 2 | 4 | | | | | | |

| HANDLING | | ACCESSORIES | | | LIGHTING ADVISED | | VOL | EXTRACTION ADVISED | | | | GROW AREAS | | |
|----------|-----------------|----------------|---------------|-----------|----------------------|------------|------|--------------------|-----------|---------------------|-----------|------------|---------------------|--------|
| Poles # | Weight Max/Pole | StrapIT Pair # | HookIT Pair # | CableIT # | Cool Tube HPS 2000°K | Led | m3 | HPS (every 30-60s) | | LED (every 1-2 min) | | # | Inside Poles L (cm) | W (cm) |
| | | | | | | | | Extraction | Intake | Extraction | Intake | | | |
| 3 | 35 kg | 2 | 4 | 30 | 2x HPS600W | 2x LED400W | 7,7 | 930 m3/h | 465 m3/h | 460 m3/h | 230 m3/h | 2 | 113 | 113 |
| 3 | 35 kg | 2 | 8 | 45 | 4x HPS600W | 4x LED400W | 15,5 | 1860 m3/h | 930 m3/h | 930 m3/h | 465 m3/h | 2 | 233 | 113 |
| 6 | 35 kg | 2 | 16 | 60 | 8x HPS600W | 8x LED400W | 31,0 | 3720 m3/h | 1860 m3/h | 1860 m3/h | 930 m3/h | 2 | 473 | 113 |
| 3 | 35 kg | 2 | 4 | 30 | 2x HPS1000W | 2x LED600W | 13,1 | 1570 m3/h | 785 m3/h | 780 m3/h | 390 m3/h | 2 | 143 | 143 |
| 3 | 35 kg | 2 | 8 | 45 | 4x HPS1000W | 4x LED600W | 26,1 | 3140 m3/h | 1570 m3/h | 1570 m3/h | 785 m3/h | 2 | 293 | 143 |
| 6 | 35 kg | 2 | 16 | 60 | 8x HPS1000W | 8x LED600W | 52,3 | 6270 m3/h | 3135 m3/h | 3140 m3/h | 1570 m3/h | 2 | 593 | 143 |

| HANDLING | | ACCESSORIES | | | LIGHTING ADVISED | | VOL | EXTRACTION ADVISED | | | | GROW AREAS | | |
|----------|-----------------|----------------|---------------|-----------|----------------------|------------|------|--------------------|-----------|---------------------|----------|------------|---------------------|--------|
| Poles # | Weight Max/Pole | StrapIT Pair # | HookIT Pair # | CableIT # | Cool Tube HPS 2000°K | Led | cf | HPS (every 30-60s) | | LED (every 1-2 min) | | # | Inside Poles L (in) | W (in) |
| | | | | | | | | Extraction | Intake | Extraction | Intake | | | |
| 3 | 75 lb | 2 | 4 | 30 | 2x HPS600W | 2x LED400W | 271 | 541 m3/h | 271 m3/h | 271 m3/h | 135 m3/h | 2 | 44,5 | 44,5 |
| 3 | 75 lb | 2 | 8 | 45 | 4x HPS600W | 4x LED400W | 544 | 1088 m3/h | 544 m3/h | 544 m3/h | 272 m3/h | 2 | 92 | 44,5 |
| 6 | 75 lb | 2 | 16 | 60 | 8x HPS600W | 8x LED400W | 1088 | 2177 m3/h | 1088 m3/h | 1088 m3/h | 544 m3/h | 2 | 186 | 44,5 |
| 3 | 75 lb | 2 | 4 | 30 | 2x HPS1000W | 2x LED600W | 458 | 916 m3/h | 458 m3/h | 458 m3/h | 229 m3/h | 2 | 56 | 56,5 |
| 3 | 75 lb | 2 | 8 | 45 | 4x HPS1000W | 4x LED600W | 916 | 1832 m3/h | 916 m3/h | 916 m3/h | 458 m3/h | 2 | 115,5 | 56,5 |
| 6 | 75 lb | 2 | 16 | 60 | 8x HPS1000W | 8x LED600W | 1832 | 3665 m3/h | 1832 m3/h | 1832 m3/h | 916 m3/h | 2 | 233,5 | 56,5 |





www.secretjardin.com - info@secretjardin.com

Q2 - 2016